

1. Introduction

The West Gippsland Salinity Management Plan is an action plan to address salinity in the West Gippsland region over the next five years. The plan details a package of management actions to reduce and prevent the effect of salinity on the region's assets. The plan also details a time frame for adoption, cost sharing arrangements and roles and responsibilities for implementation.

The plan is an initiative of the West Gippsland Catchment Management Authority as part of its regional natural resource management program as outlined in their Regional Catchment Strategy (2004). The plan area is shown in Figure 1 and includes the West Gippsland Catchment Management Authority region plus the Bengworden/Meerlieu areas in the East Gippsland Catchment Management Authority region.

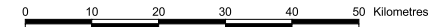
This plan builds on and updates the existing Lake Wellington Catchment Salinity Management Plan (1993) and the draft South Gippsland Salinity Strategy (2000).

This plan defines "salinity" as the detrimental effect of salt on the region's assets. This definition includes the salinisation of land, surface water and groundwater affecting agricultural, social, infrastructure and environmental assets. The effect of salt on the region's assets can be caused by salt coming from an elevated water table, the addition of salt via irrigation water and the influx of salt from the ocean. Salinity and water logging are often linked and therefore, this plan also addresses water logging issues but only where an elevated water table exists. The direct effects of water logging due to ponded surface water without the existence of an elevated water are not covered by this plan.

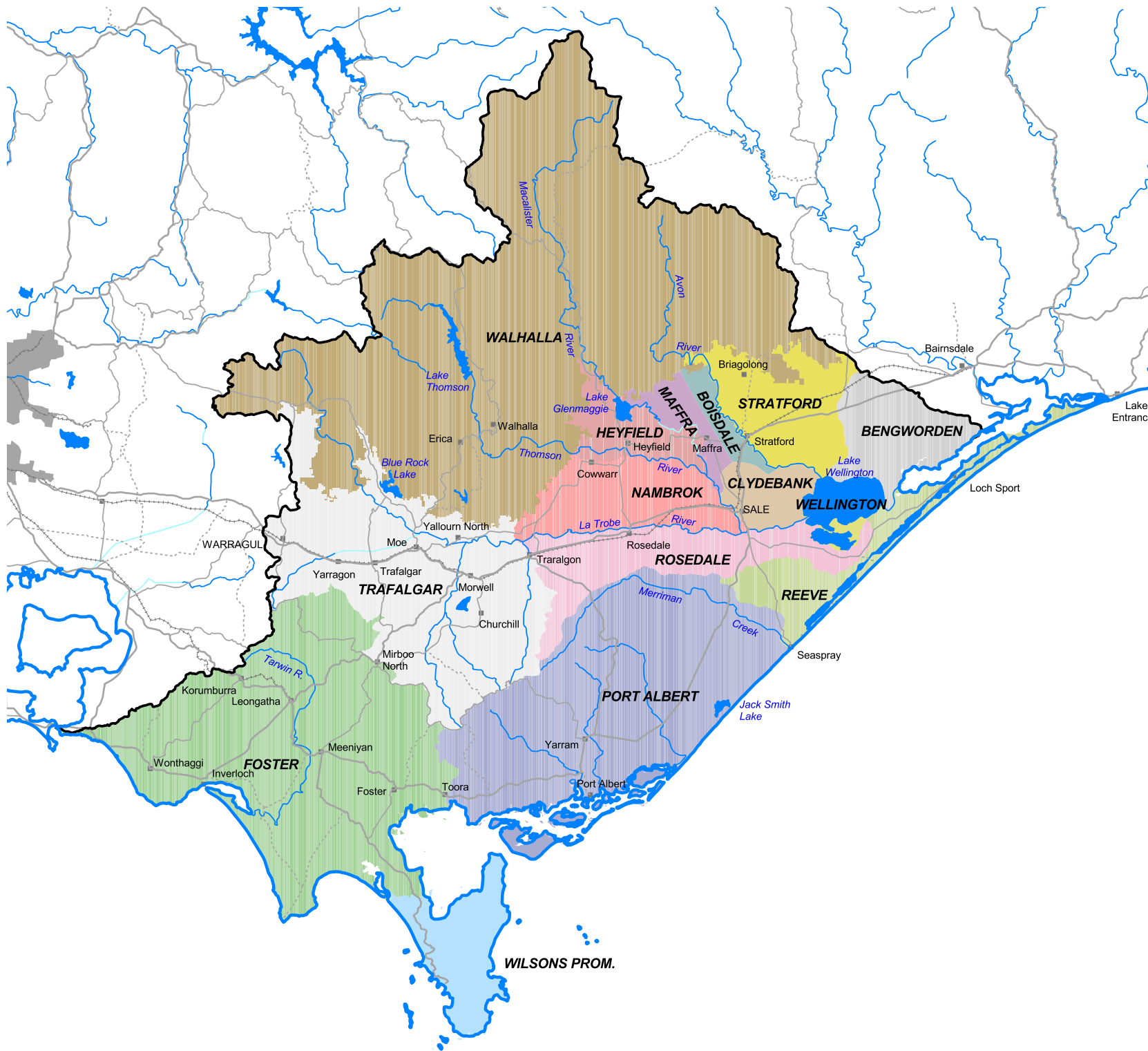
Figure 1



**West Gippsland
Salinity Management Plan**
Salinity Management Areas



- Salinity Management Areas
- BENGWORDEN
 - BOISDALE
 - CLYDEBANK
 - FOSTER
 - HEYFIELD
 - MAFFRA
 - NAMBROK
 - PORT ALBERT
 - REEVE
 - ROSEDALE
 - STRATFORD
 - TRAFALGAR
 - WALHALLA
 - WELLINGTON
 - WILSONS PROM. NP



COPYRIGHT
Sinclair Knight Merz Pty. Ltd. has prepared this document in accordance with the instructions of the Department of Sustainability and Environment for its sole and specific use. Any persons who use any information contained herein do so at their own risk.
Topographic information reproduced with permission of Land Victoria, Department of Natural Resources and Environment. The State of Victoria and Sinclair Knight Merz Pty. Ltd. do not warrant the accuracy or completeness of information in this product and any person using or relying upon such information does so on the basis that the State of Victoria and Sinclair Knight Merz Pty. Ltd. shall bear no responsibility or liability whatsoever for any errors, faults, defects or omissions in the information.
This document incorporates data which is:
© Commonwealth of Australia (Geoscience Australia) 2002
The Data has been used in this document with the permission of Geoscience Australia. Geoscience Australia has not evaluated the Data as incorporated within this document, and therefore gives no warranty regarding its accuracy, completeness, currency or suitability for any particular purpose.