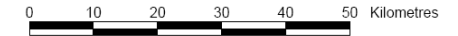
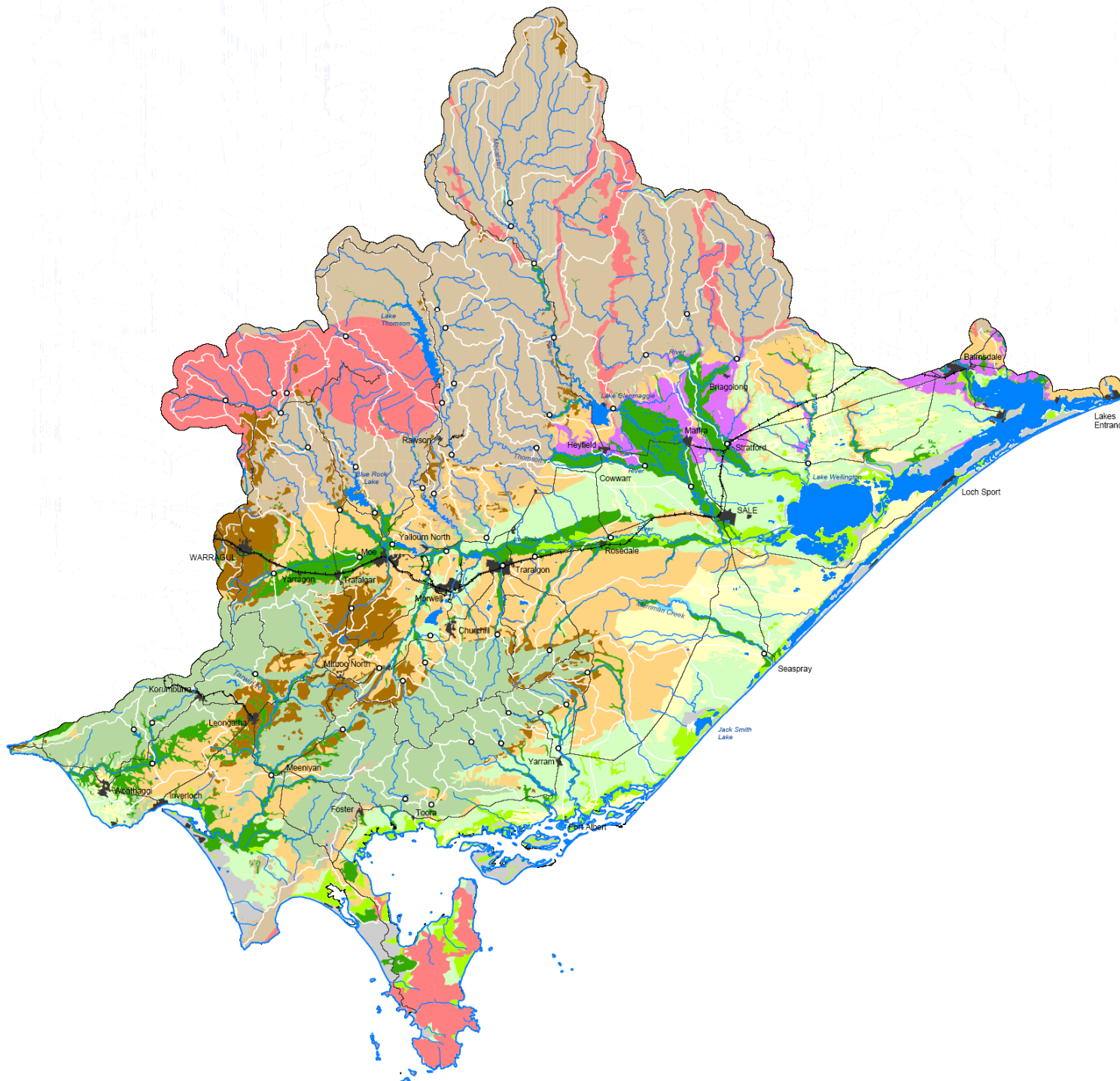


Department of Primary Industries

West Gippsland shallow groundwater flow systems

SURFACE GEOLOGY



- Catchment Boundaries
- Gauge Stations
- Surface Geology**
- Quaternary - Recent River Alluvials
- Quaternary - Swamp deposits
- Quaternary - Coastal dunes
- Quaternary - Inland aeolian dunes
- Quaternary - Terraced alluvial deposits
- Quaternary - General
- Tertiary - Limestone
- Tertiary - Basalt
- Tertiary - Sands
- Cretaceous - Sedimentary
- Paleozoic - Igneous and metamorphic
- Paleozoic - Sedimentary

NOTES:

Catchments.
Catchment boundaries have been compiled for the stream gauging stations shown. Along the coast, additional boundaries were compiled to differentiate stream basins downstream of the lowest gauge. All boundaries were hand drawn based on the 1:100,000 topographic map series. The boundaries have not been calibrated to the digital terrain model or the 1:25,000 data used for this project.

Geology
Surface geology information compiled from data supplied by the Department of Sustainability and Environment (DSE) in April 1998.

COPYRIGHT: The concepts and information contained in this document are the copyright of the Department of Primary Industries. Use or copying of the document in whole or in part without the written permission of the Department of Primary Industries constitutes an infringement of copyright.

This document was prepared for the Department of Primary Industries by Sinclair Knight Merz Pty. Ltd. Sinclair Knight Merz Pty. Ltd. does not warrant that this document is definitive nor free of error and does not accept liability for any loss caused or arising from reliance upon information provided herein.

This document incorporates data which is:
© Commonwealth of Australia (Geoscience Australia) 2002
The Data has been used in this document with the permission of Geoscience Australia. Geoscience Australia has not evaluated the Data as incorporated within this document, and therefore gives no warranty regarding its accuracy, completeness, currency or suitability for any particular purpose.



Refer to Sinclair Knight Merz document
WCMS\wc03157\technical\spatial\arcmap\
WC03157_geology_A4.mxd

