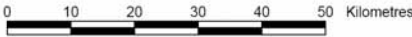


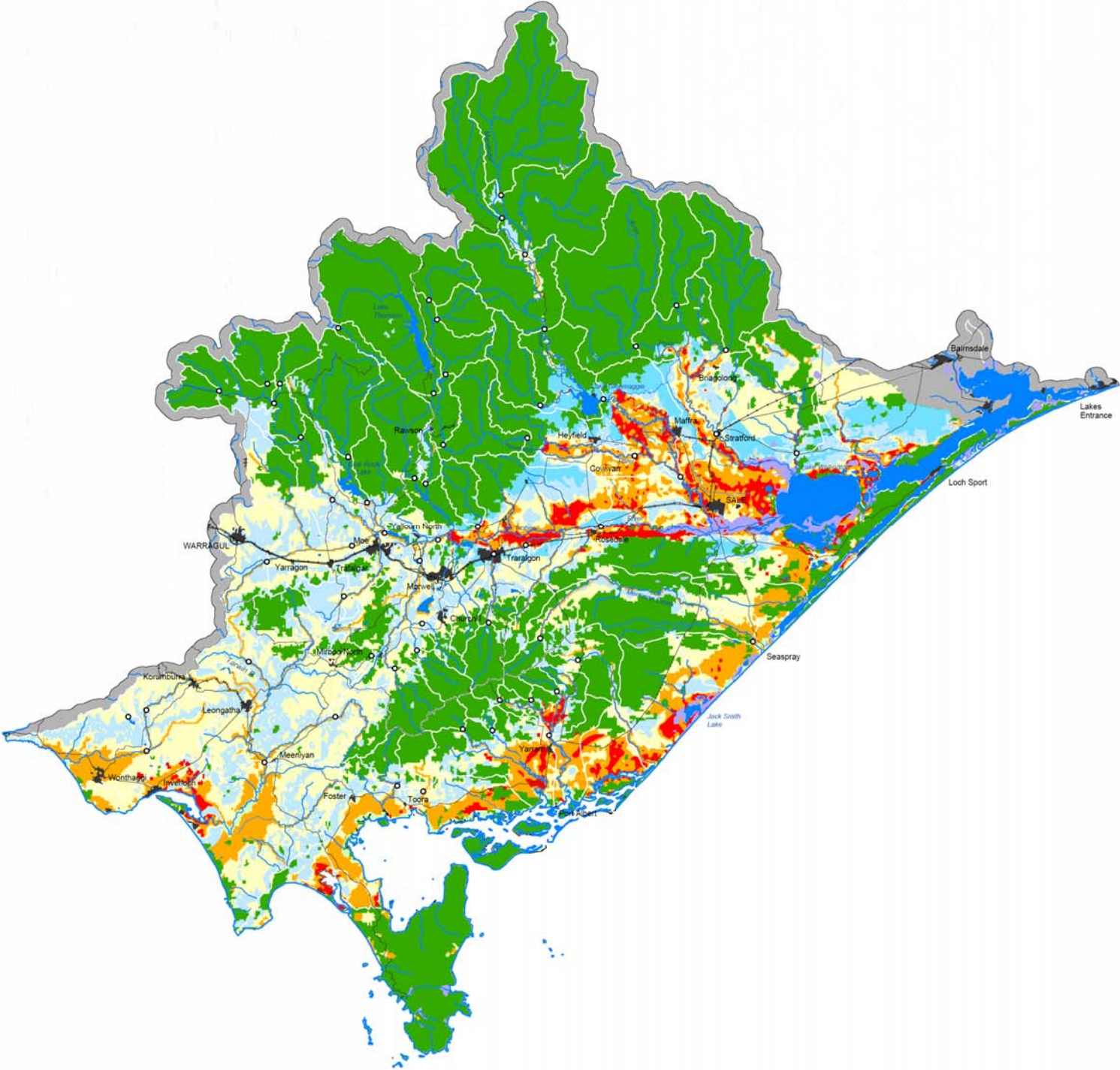
Department of Primary Industries

West Gippsland shallow groundwater flow systems

WATERTABLE DEPTH (m)



- Catchment Boundaries
- Gauge Stations
- Watertable Depth (m)**
- Forest
- Coastal Plain
- < 2
- 2 - 5
- 5 - 10
- 10 - 20
- > 20
- Unknown



NOTES:

Catchments.
Catchment boundaries have been compiled for the stream gauging stations shown. Along the coast, additional boundaries were compiled to differentiate stream basins downstream of the lowest gauge. All boundaries were hand drawn based on the 1:100,000 topographic map series. The boundaries have not been calibrated to the digital terrain model or the 1:25,000 data used for this project

Watertable Depth
Watertable depth information compiled from mapping undertaken for the National Land and Water Resources Audit and mapping undertaken by the West Gippsland Catchment Management Authority in the Macalister Irrigation District (MID) and the south west Gippsland Region. Watertable depths for forested areas were not compiled. Map first appeared in WGCMA (2004).

COPYRIGHT: The concepts and information contained in this document are the copyright of the Department of Primary Industries. Use or copying of the document in whole or in part without the written permission of the Department of Primary Industries constitutes an infringement of copyright.
This document was prepared for the Department of Primary Industries by Sinclair Knight Merz Pty. Ltd.
Sinclair Knight Merz Pty. Ltd. does not warrant that this document is definitive nor free of error and does not accept liability for any loss caused or arising from reliance upon information provided herein.
This document incorporates data which is:
© Commonwealth of Australia (Geoscience Australia) 2002
The Data has been used in this document with the permission of Geoscience Australia. Geoscience Australia has not evaluated the Data as incorporated within this document, and therefore gives no warranty regarding its accuracy, completeness, currency or suitability for any particular purpose.



Refer to Sinclair Knight Merz document
WCMS\w03157\technical\spatial\arcmap\
WC03157_watertable_depth_A4.mxd