

HILLY TO UNDULATING PLATEAU REMNANTS ON VARIABLE LITHOLOGY

Land System: Wellington Wn – Public land only

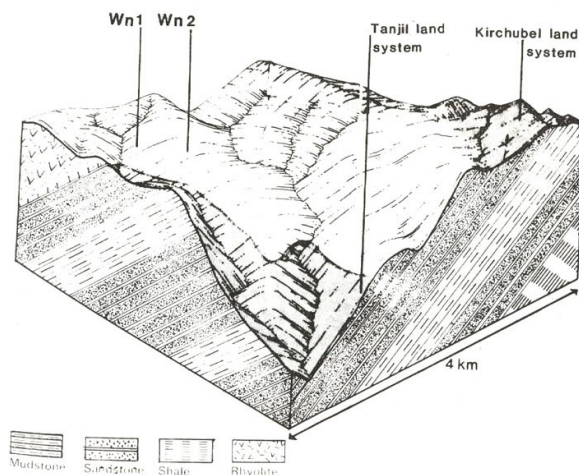
This land type occurs in the northern part of the catchment along broad crests adjacent to Ballantynes and Rowleys Ridge roads. These areas are commonly snow covered in winter.

The land consists of partially dissected hilly to undulating prior landscape residuals at relatively high elevation. The lithology varies but the dominant rocks are Devonian plutonics (DGA) and metamorphics (m) with some small scattered areas of acid volcanics. The terrain contains broad rounded ridges and low, but sometimes sharp, hills. Slopes vary from steep to gentle.

The soil that occur are commonly leached, well drained, acidic and of intermediate texture with moderate to strongly structured clay subsoils. Except in locally steep areas, the soils are deep with dark brown sandy clay loams grading into yellowish brown or reddish brown sandy clay loam to light clay subsoils. These soils are classified as Red or Brown Earths and may have gradational or uniform textured profiles.

The native vegetation is a shrubby or layered open forest with alpine as (*E. delagatenis*) and narrow-leaf peppermint (*E. radiata*) occurring at high elevation, and mountain ash (*E. regnans*), broadleaf peppermint (*E. dives*), and messmate (*E. obliqua*) occurring at lower elevations.

Two components, Wn1 and Wn2, have been delineated within this land type. The first Wn1, represents the areas with steeper slopes and drainage lines, whilst the second Wn2, represents the more extensive areas with gentle undulating slopes.



Wellington Land Systems & Components (Public land only)