

## MODERATELY SLOPING TERRAIN ON DEVONIAN PLUTONICS FLANKING MT BAW BAW

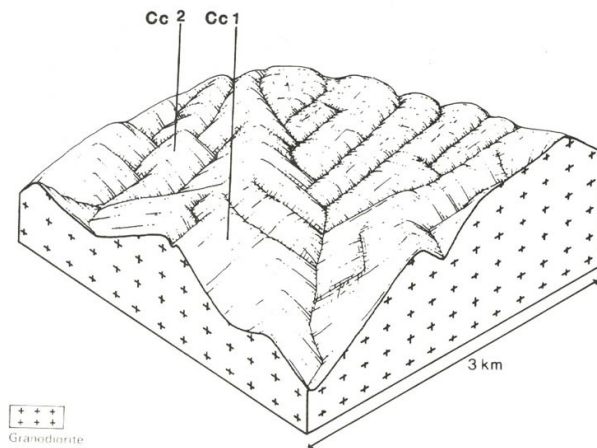
### **Land System: Cascade Cc – Public land only**

This type occurs in a limited area along the far northern boundary of the upper catchment between mt Toorong and Mt Baw Baw. It consists of moderately sloping terrain with short hill slopes, narrow drainage corridors and rocky crests formed on Devonian granodiorite (DGA). These areas are frequently snow covered during winter.

The dominant soil types that occur are moderately deep to deep Brown Earths with black sandy loam to sandy clay loam topsoils merging into weakly structured brown subsoils which are of similar texture or more clayey. These soils are generally well drained.

The native vegetation is a shrubby open forest containing alpine ash (*E. delagatensis*) and shining gum (*E. nitens*) as characteristic species Sedgeland species also occur in limited areas.

Within public land, (mapped at 1:50,000 scale) two components have been delineated, Cc1 the moderately steep slopes and drainage courses, and Cc2, the rock crests with shallower soils.



### **Cascade Land System & Components (Public land only)**