

# Weeds of National Significance



## National Willows Program

## WILLOWS WORKSHOP

Friday 15th December, 2006

*Supported by the State Government of Victoria.*



Department of  
Primary Industries



**Australian Government**

# Workshop Game Plan

- National, state and regional context

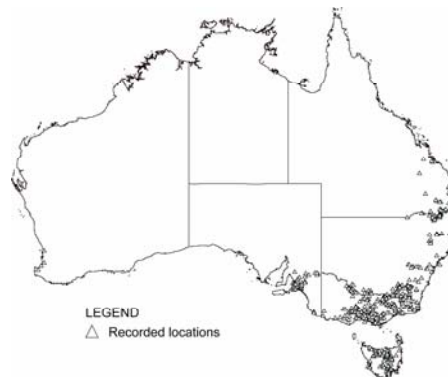
- Willow identification



- Willow sawfly in Australia

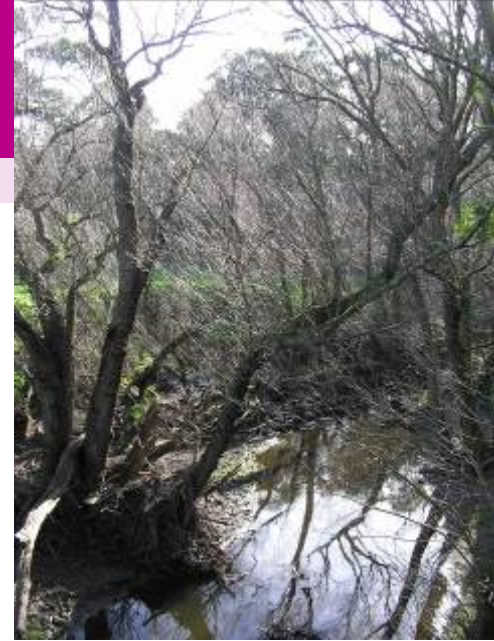


- Update regional maps highlighting where willows occur



# Willows

- > \$10 million spent annually
- Infest 1000s of km of waterways
- > 32 types of willows
- Spread in different ways
- Distribution, invasiveness and impacts of specific willows are poorly understood



# Did you know?

**Q: Do willows consume more water than natives?**

Clue: it depends on where they are in the landscape



**A: Yes: if growing in the water**

**No: if growing on the bank**

Can consume approx. 3 megalitres per crown hectare more water than river red gums





# WILLOW INVASION

Increased shading of stream

Sediment trapping around roots

Change in vegetation & structure

Erode Riverbanks

Change in higher trophic orders

Terrestrial insects

Leaf litter input

Emergent stream insects

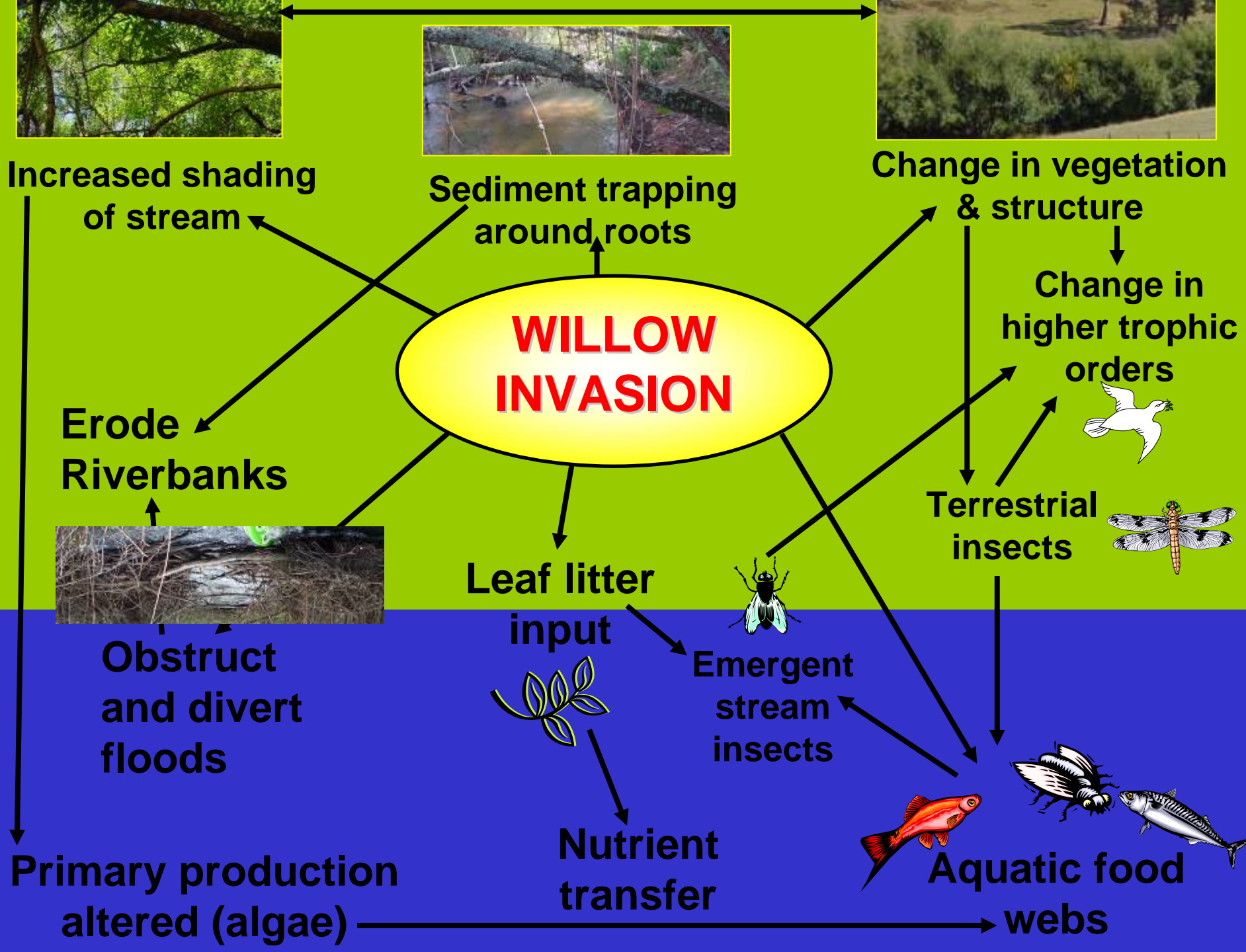
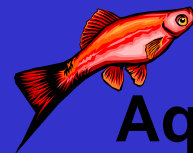
Nutrient transfer

Aquatic food webs

Primary production altered (algae)



Obstruct and divert floods



# How do willows spread?



Seed up to 100km



Layering



Twigs and branches

# Spread by seed



**Salix nigra**  
**(black willow)**  
e.g. North East Victoria  
- 3 generations

**Salix cinerea**  
**(grey sallow)**  
e.g. Sydney catchment  
- swamp collapse 1998



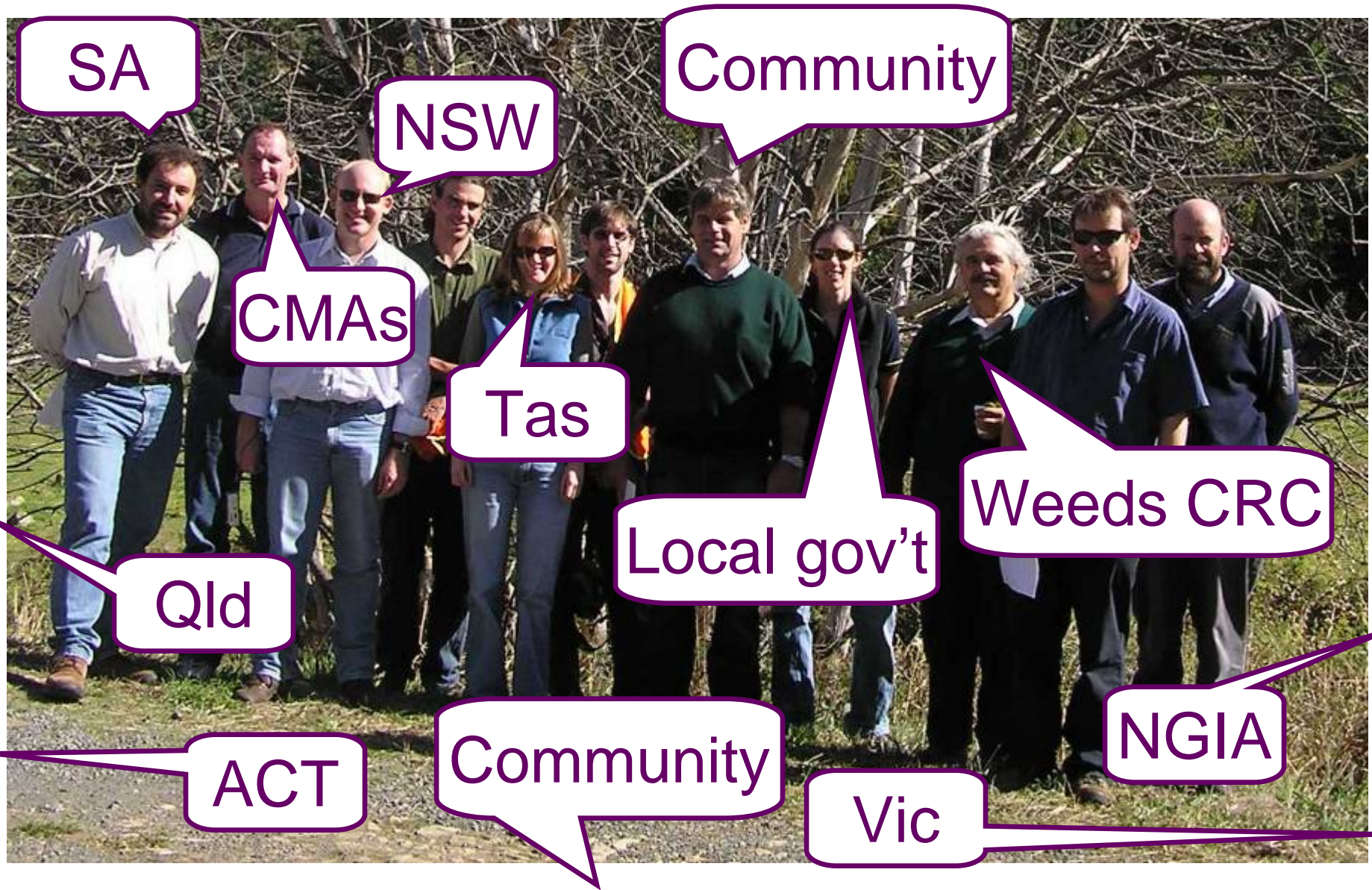
# Don't respect our borders



Early detection and eradication of seeding willows e.g. Tasmania



# National Willows Taskforce



# Did you know?

**Q: For what religious festivals are willows allowed to still be imported?**

Clue: they can be imported from Israel and the U.S.A

**A: Jewish festivals**

‘cut flowers and foliage’

‘only Rabbis may import the cuttings’

One of the Four Kinds taken on Sukkos: “The willow, which is inedible and lacks aroma as well, represents those people lacking both in Torah and good deeds”

