








# Distribution of *Salix viminalis*

**Present distribution**  
 *Salix viminalis*

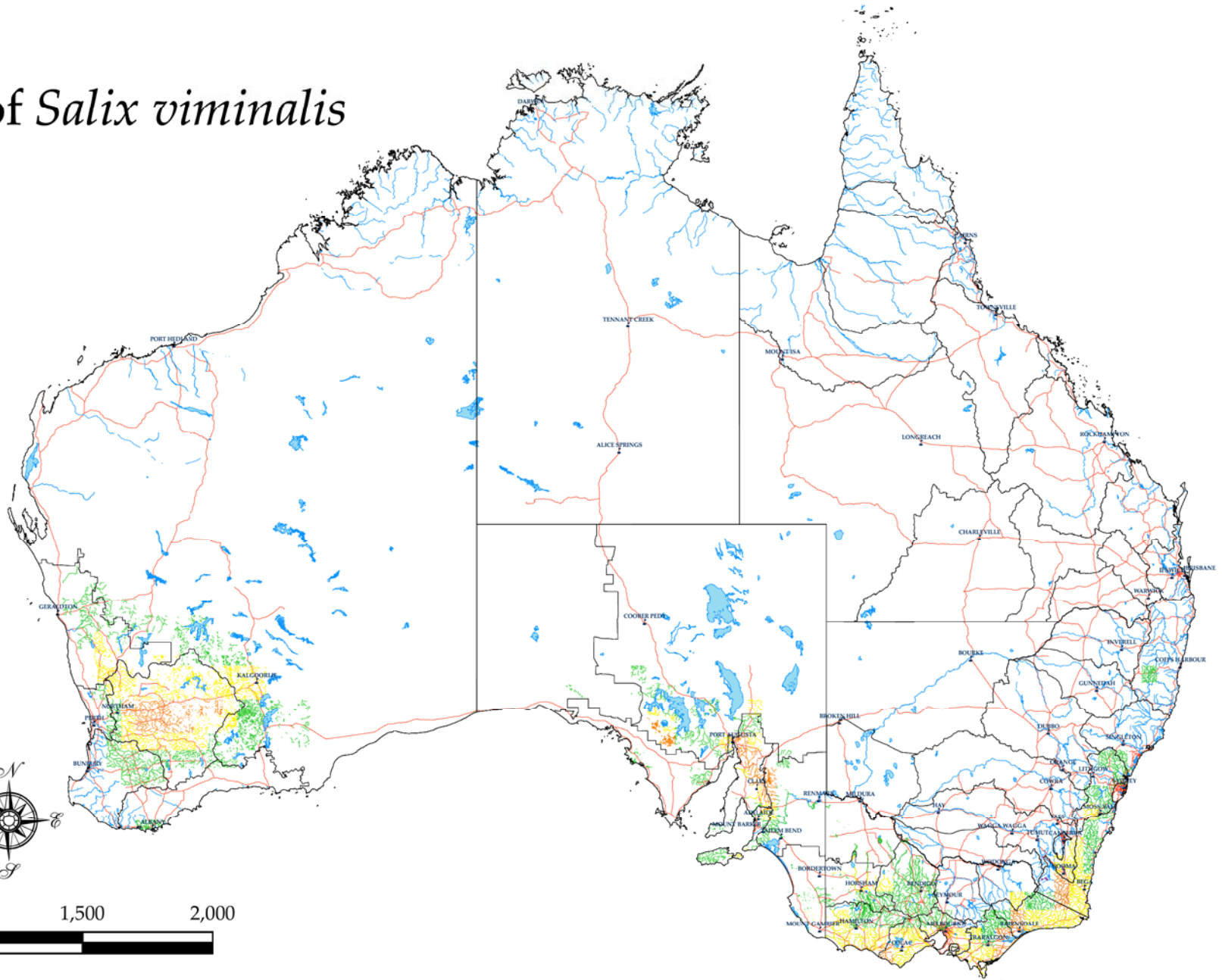
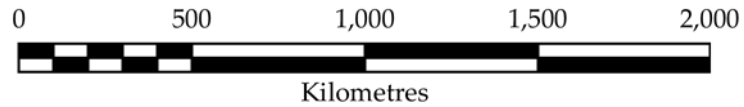
**Potential distribution**  
**Climatic suitability**  
 Very High  Moderate  
 High  Likely

**Geographic data**  
 Waterways  Roads  
 Waterbodies  Towns

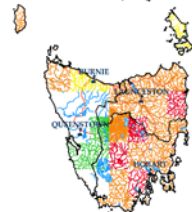
Produced on behalf of  
 The National Willows Taskforce by  
 Victorian Department of Primary Industries

Base data from Geosciences Australia  
 Salix distribution sourced by the  
 National Willows Taskforce  
 © The State of Victoria,  
 Department of Primary Industries, 2008.

**Disclaimer:**  
 This publication may be of assistance to you  
 but the State of Victoria and its employees do  
 not guarantee that the publication is without  
 flaw of any kind or is wholly appropriate for  
 your particular purposes and therefore disclaims  
 all liability for any error, loss or other  
 consequence which may arise from you relying  
 on any information in this publication.



Supported by the State Government of Victoria



Australian Government