



Distribution of *Salix S. fragilis*





Present distribution

-  *Salix fragilis*
-  Treated willows

Potential distribution Climatic suitability

-  Very High
-  Moderate
-  High
-  Likely

Geographic data

-  Waterways
-  Roads
-  Waterbodies
-  Towns

Produced on behalf of
The National Willows Taskforce by

Victorian Department of Primary Industries

Base data from Geosciences Australia
Salix distribution sourced by the
National Willows Taskforce
© The State of Victoria,
Department of Primary Industries, 2008.

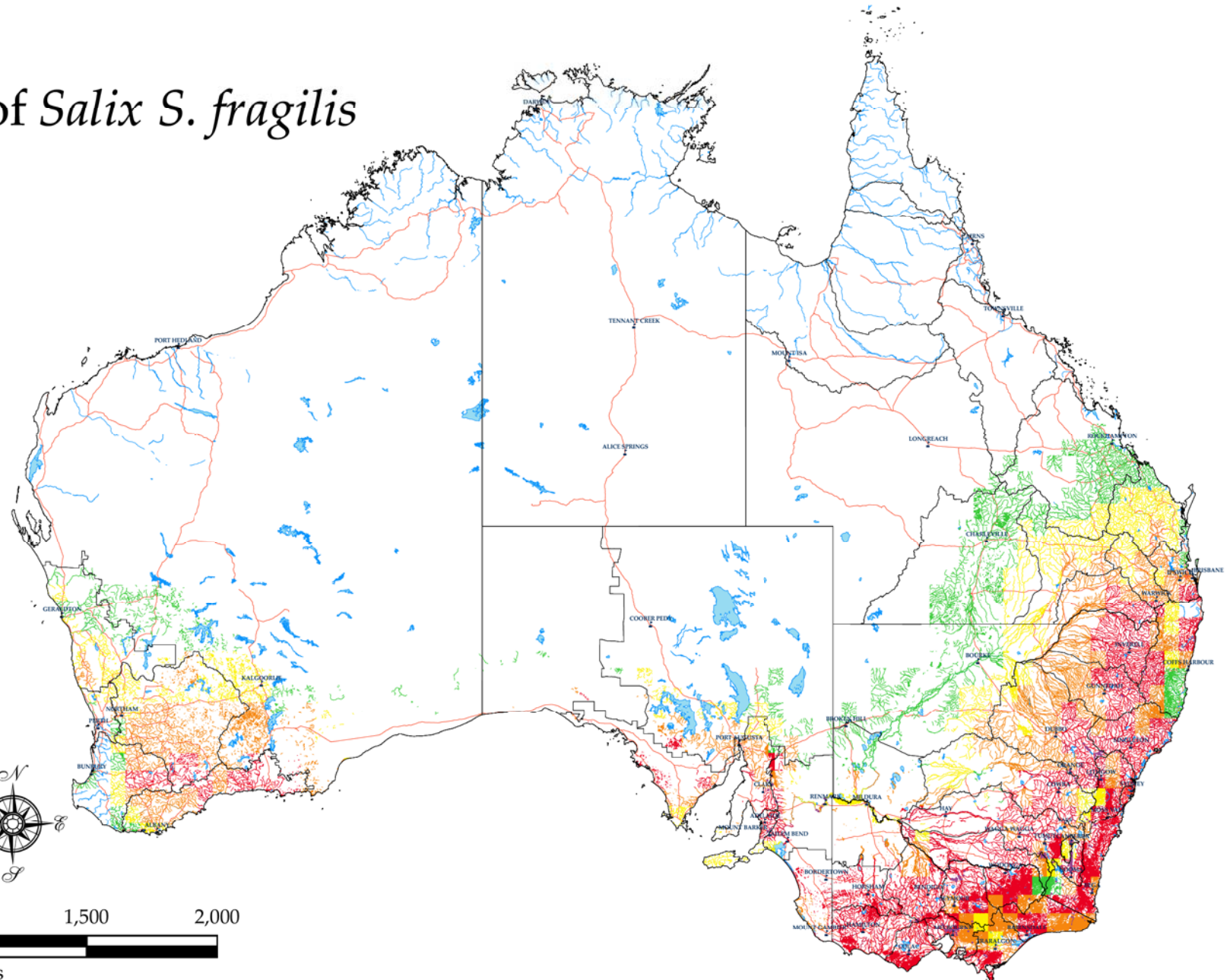
Disclaimer:
This publication may be of assistance to you
but the State of Victoria and its employees do
not guarantee that the publication is without
flaw of any kind or is wholly appropriate for
your particular purposes and therefore disclaims
all liability for any error, loss or other
consequence which may arise from you relying
on any information in this publication.



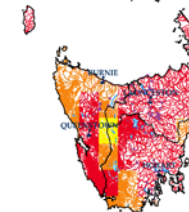
0 500 1,000 1,500 2,000



Kilometres



Supported by the State Government of Victoria



Australian Government