





# Distribution of *Salix chilensis*

## Present distribution





 *Salix chilensis*

## Potential distribution

### Climatic suitability

 Very High  Moderate  
 High  Likely

## Geographic data

 Waterways  Roads  
 Waterbodies  Towns

Produced on behalf of  
The National Willows Taskforce by

Victorian Department of Primary Industries

Base data from Geosciences Australia  
*Salix* distribution sourced by the  
 National Willows Taskforce  
 © The State of Victoria,  
 Department of Primary Industries, 2008.

### Disclaimer:

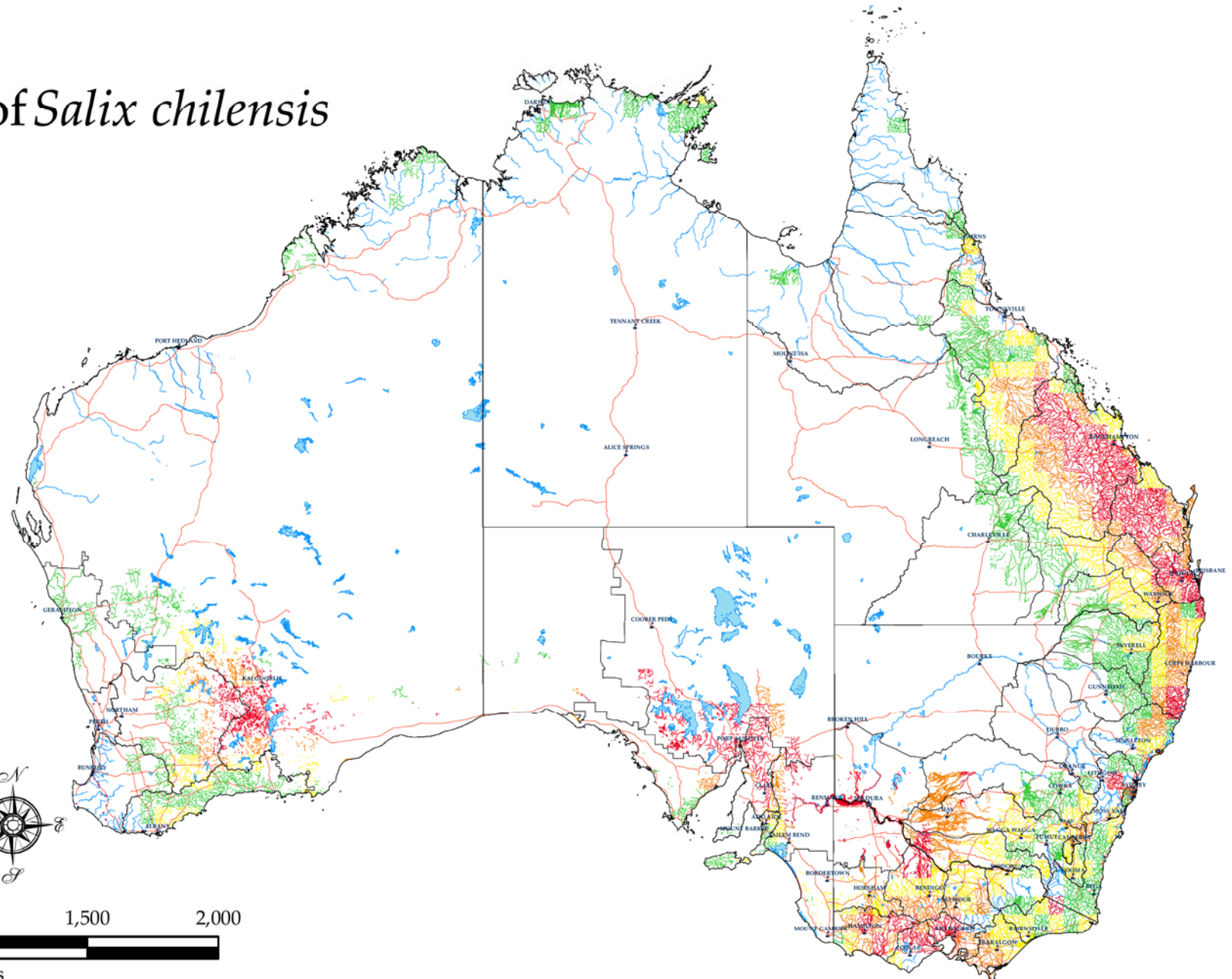
This publication may be of assistance to you but the State of Victoria and its employees do not guarantee that the publication is without flaw of any kind or is wholly appropriate for your particular purposes and therefore disclaims all liability for any error, loss or other consequence which may arise from you relying on any information in this publication.



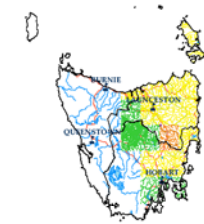
0 500 1,000 1,500 2,000



Kilometres



Supported by the State Government of Victoria



Australian Government