

Distribution of *Salix aegyptiaca*

Potential distribution
Climatic suitability

Very High	Moderate
High	Likely

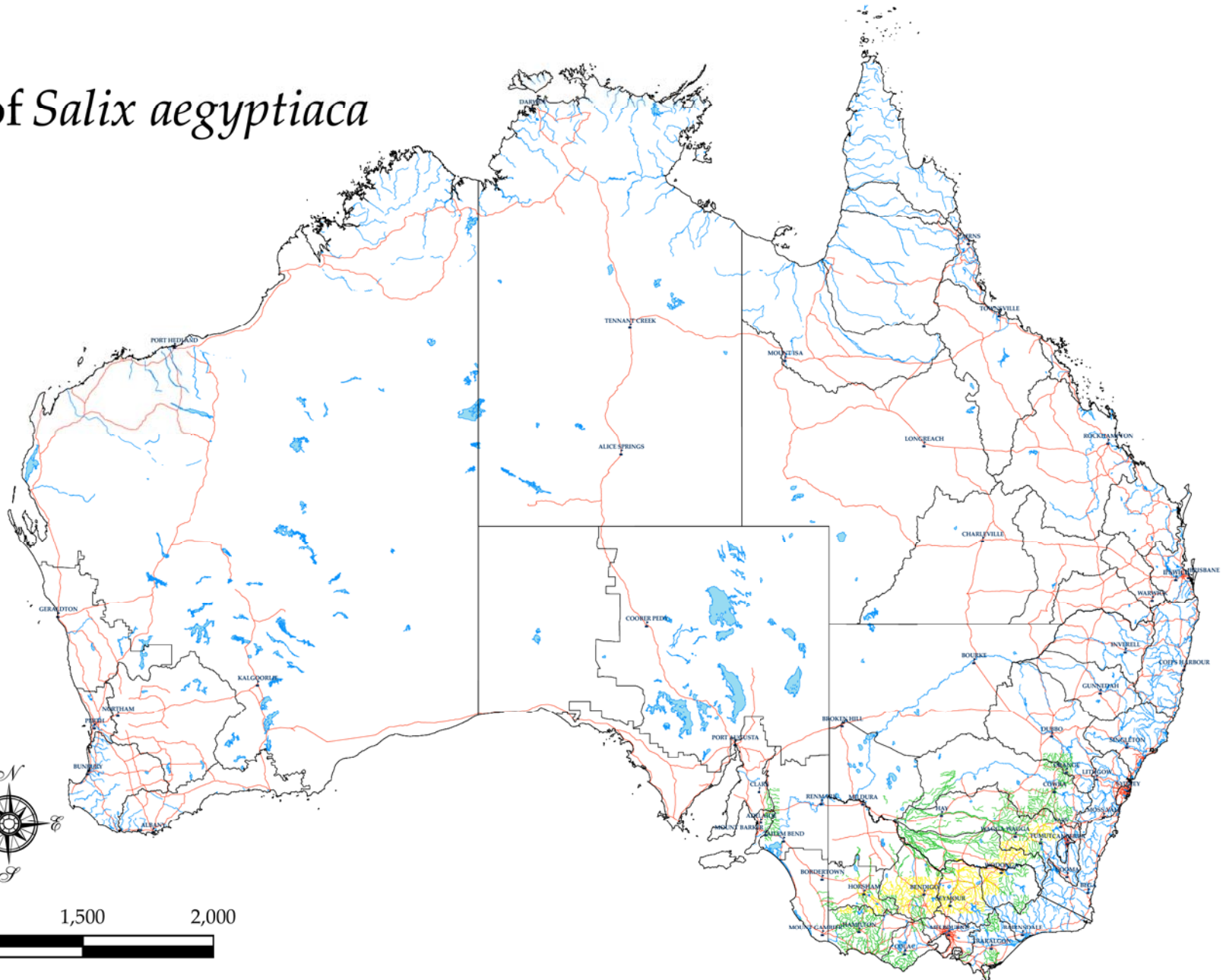
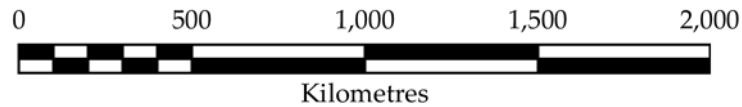
Geographic data

Waterways	Roads
Waterbodies	Towns

Produced on behalf of
 The National Willows Taskforce by
 Victorian Department of Primary Industries

Base data from Geosciences Australia
 Salix distribution sourced by the
 National Willows Taskforce
 © The State of Victoria,
 Department of Primary Industries, 2008.

Disclaimer:
 This publication may be of assistance to you
 but the State of Victoria and its employees do
 not guarantee that the publication is without
 flaw of any kind or is wholly appropriate for
 your particular purposes and therefore disclaims
 all liability for any error, loss or other
 consequence which may arise from you relying
 on any information in this publication.



Supported by the State Government of Victoria



Australian Government