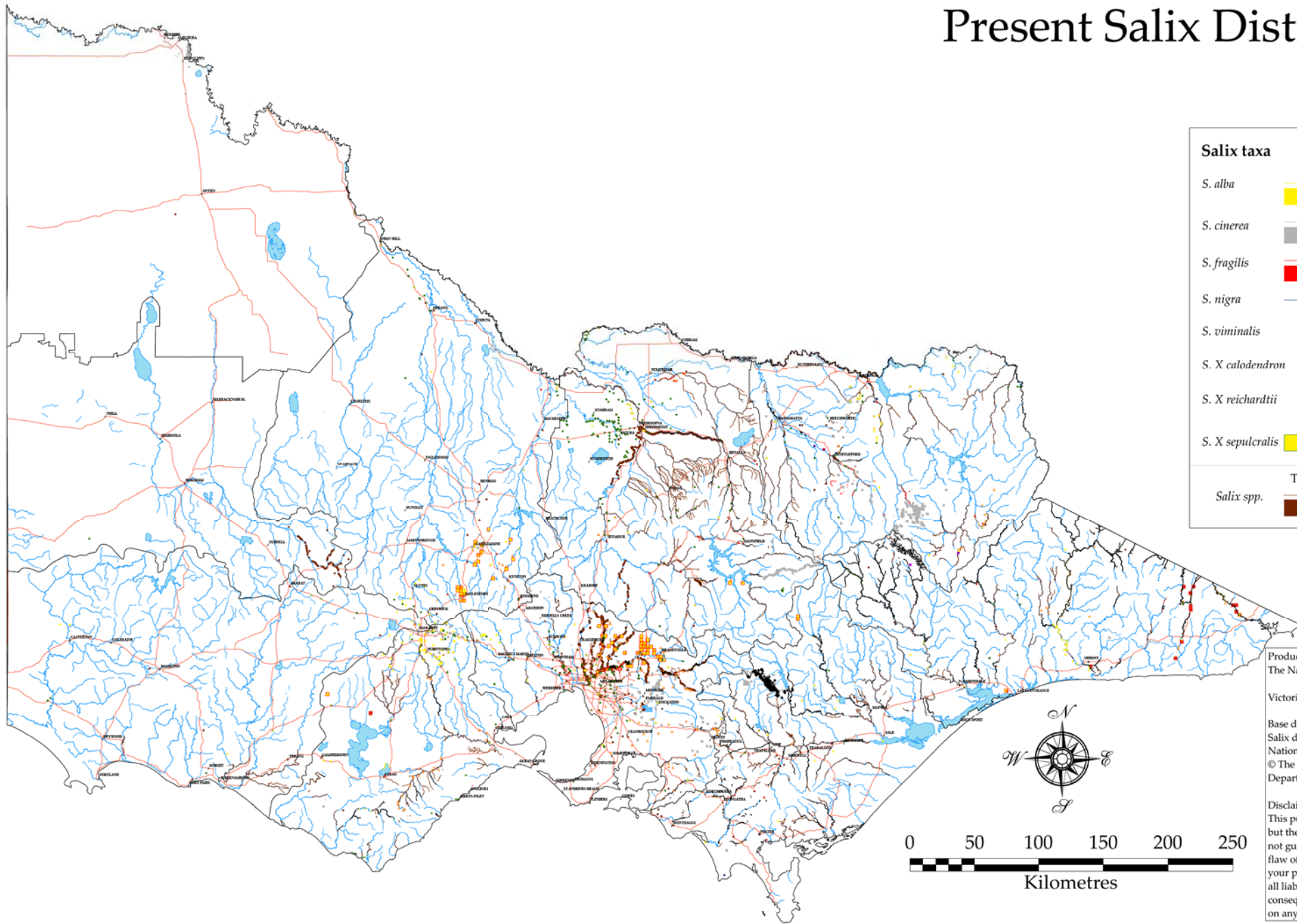


# Present Salix Distribution



**Salix taxa**

<i>S. alba</i>		<i>S. babylonica</i>	
<i>S. cinerea</i>		<i>S. caprea</i>	
<i>S. fragilis</i>		<i>S. matsudana</i>	
<i>S. nigra</i>		<i>S. purpurea</i>	
<i>S. viminalis</i>		NZ hybrid	
<i>S. X calodendron</i>		<i>S. X pendulina</i>	
<i>S. X reichardtii</i>		<i>S. X rubens</i>	
<i>S. X sepulcralis</i>		Treated willows	

<i>Salix</i> spp.	Tree	Shrub	Hybrid

**Geographic data**

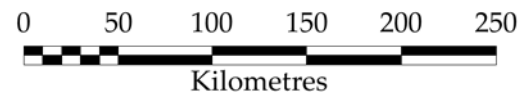
	Waterways		Roads
	Waterbodies		Towns
	Channels		

Produced on behalf of  
The National Willows Taskforce by

Victorian Department of Primary Industries

Base data from Geosciences Australia  
Salix distribution sourced by the  
National Willows Taskforce  
© The State of Victoria,  
Department of Primary Industries, 2008.

**Disclaimer:**  
This publication may be of assistance to you but the State of Victoria and its employees do not guarantee that the publication is without flaw of any kind or is wholly appropriate for your particular purposes and therefore disclaims all liability for any error, loss or other consequence which may arise from you relying on any information in this publication.



Supported by the State Government of Victoria

