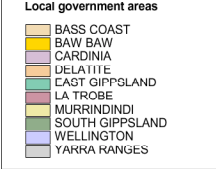
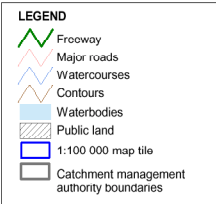
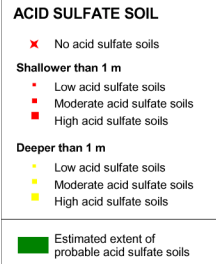
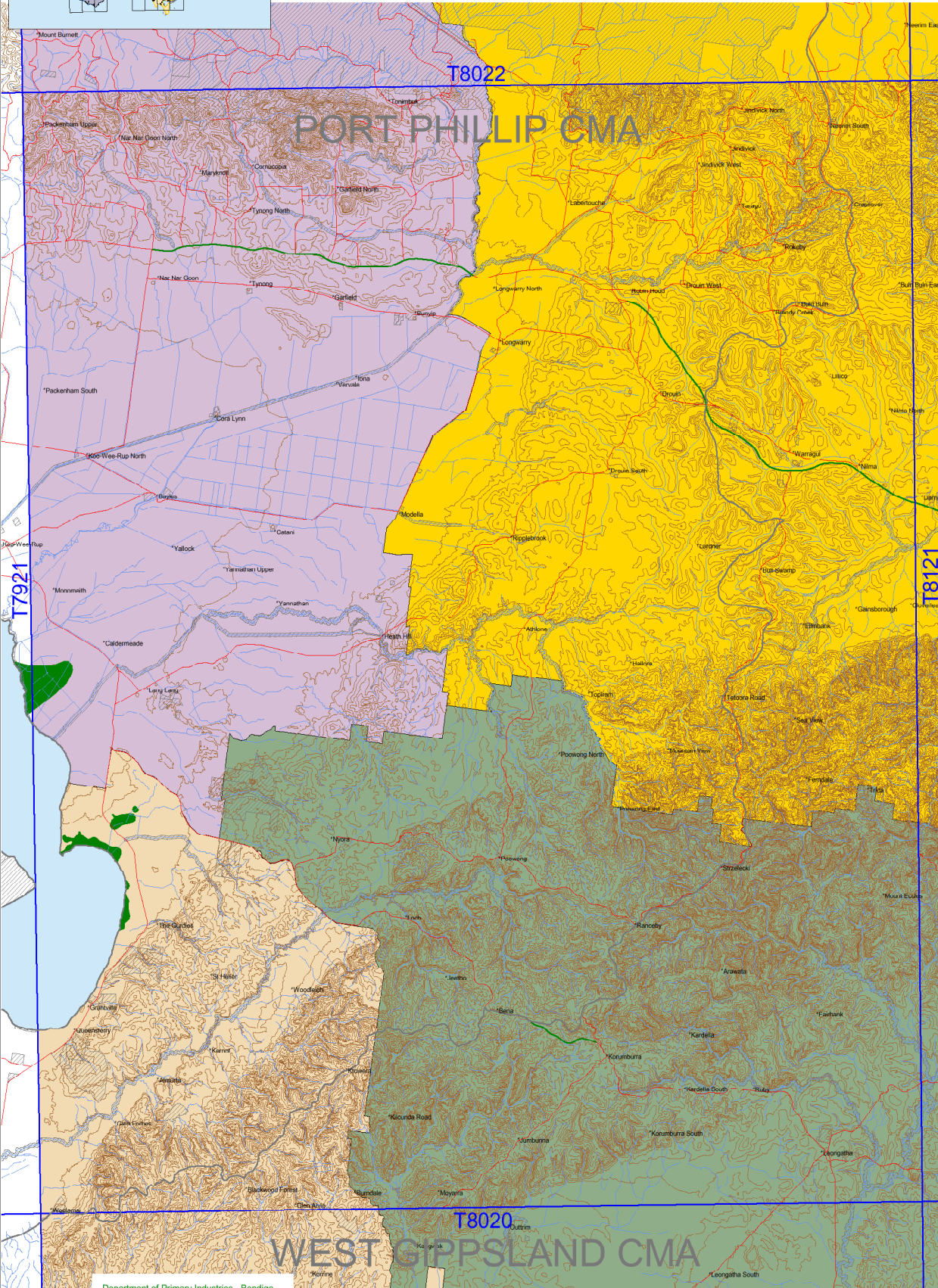
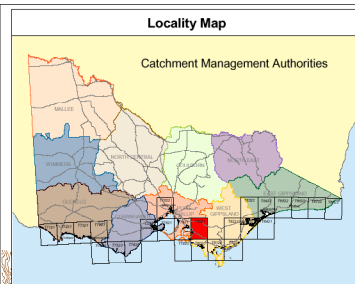


Coastal Acid Sulfate Soil Hazard

Warragul T8021

Universal Transverse Mercator Zone 55

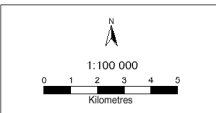


Information on acid sulfate soils

The information for the acid sulfate soil mapping is comprised of two separate sources:

- 1) The estimate of the extent that acid sulfate soil (either potential acid sulfate soil or actual sulfate soil) is most likely to occur. This is a calculated approximation and due to the scale of the mapping there may be areas outside the estimated regions that also have acid sulfate soils.
- 2) The site information has been analysed for the presence of oxidisable sulfur. These sites indicate only that point at which it is marked and may not truly represent the entire area in which it is located.

FOR MORE INFORMATION SEE THE ASSOCIATED Guidelines for the Use of Coastal Acid Sulfate Soil Hazard Maps for Victoria



OTHER INFORMATION

Base data such as roads, rivers, public land (1:100 000) towns, CMA boundaries and irrigation areas (1:250 000) are sourced from the NRE Corporate Geospatial Data Library.

This map may be of assistance to you but the State of Victoria and its employees do not guarantee that the map is without flaw of any kind or is wholly appropriate for your particular purposes and therefore disclaims all liability for any error, loss or other consequence which may arise from you relying on any information in this map.

Map produced July 2002
Copyright © The State of Victoria, Department of Natural Resources & Environment, 2002

Department of Primary Industries - Bendigo
Centre for Land Protection Research
Cnr Midland Hwy & Taylor St,
Epsom Victoria 3551
(PO Box 3100 Bendigo Delivery Centre 3554)
Ph: (03) 54 304444
Fax: (03) 54 304304
email: clpr@nre.vic.gov.au

