









Statewide Crop Suitability - Map 4.6

Broccoli & Cauliflower (Winter Crop)

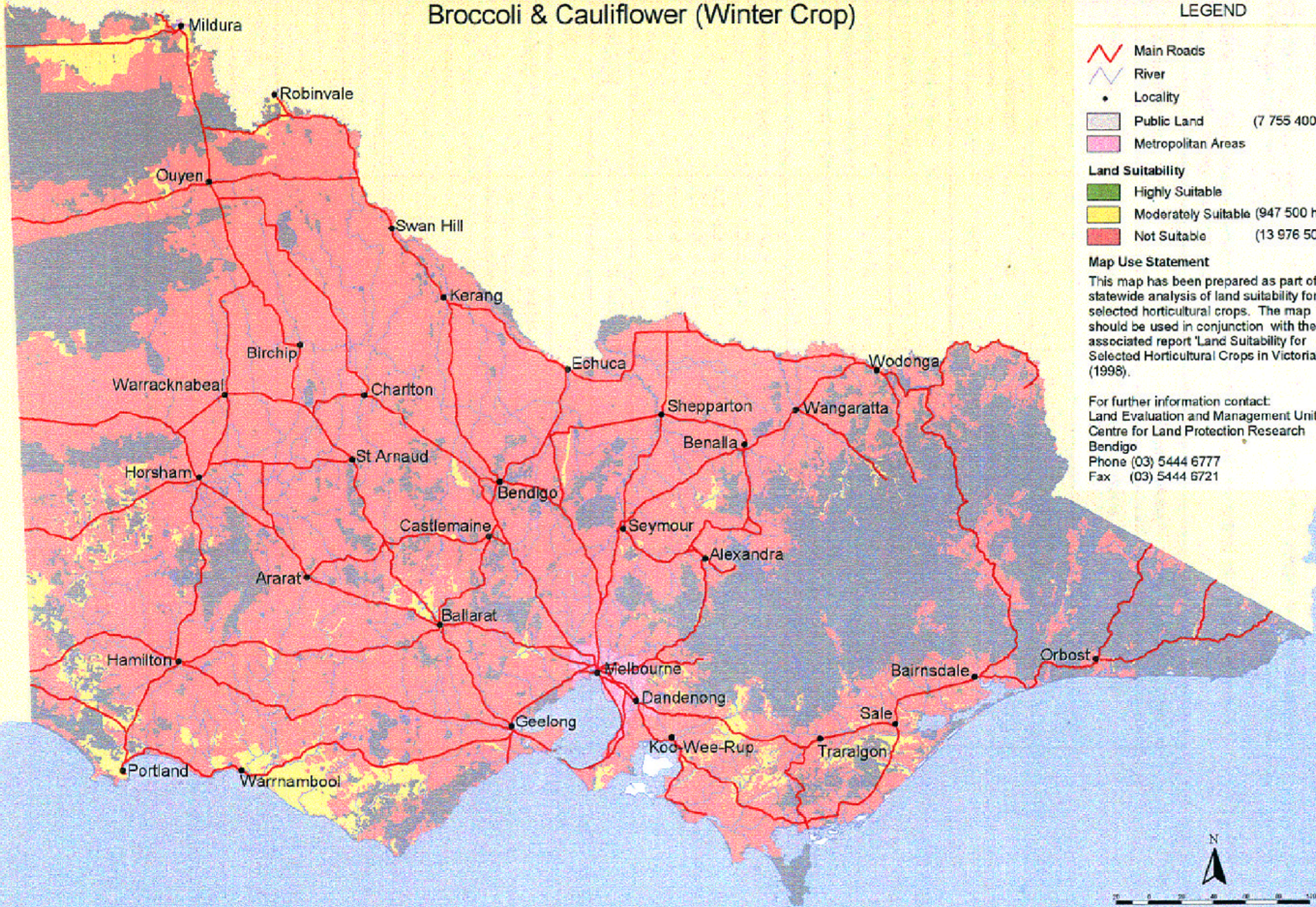
LEGEND

-  Main Roads
 -  River
 -  Locality
 -  Public Land (7 755 400 ha)
 -  Metropolitan Areas
- Land Suitability**
-  Highly Suitable
 -  Moderately Suitable (947 500 ha)
 -  Not Suitable (13 976 500 ha)

Map Use Statement

This map has been prepared as part of a statewide analysis of land suitability for selected horticultural crops. The map should be used in conjunction with the associated report 'Land Suitability for Selected Horticultural Crops in Victoria' (1998).

For further information contact:
 Land Evaluation and Management Unit
 Centre for Land Protection Research
 Bendigo
 Phone (03) 5444 6777
 Fax (03) 5444 6721



Scale 1:3 250 000

Map 4.6 Statewide crop suitability - broccoli and cauliflower (winter crop).



Centre for Land Protection Research