









Statewide Crop Suitability - Map 4.10

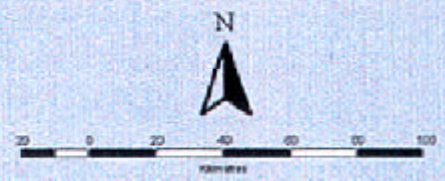
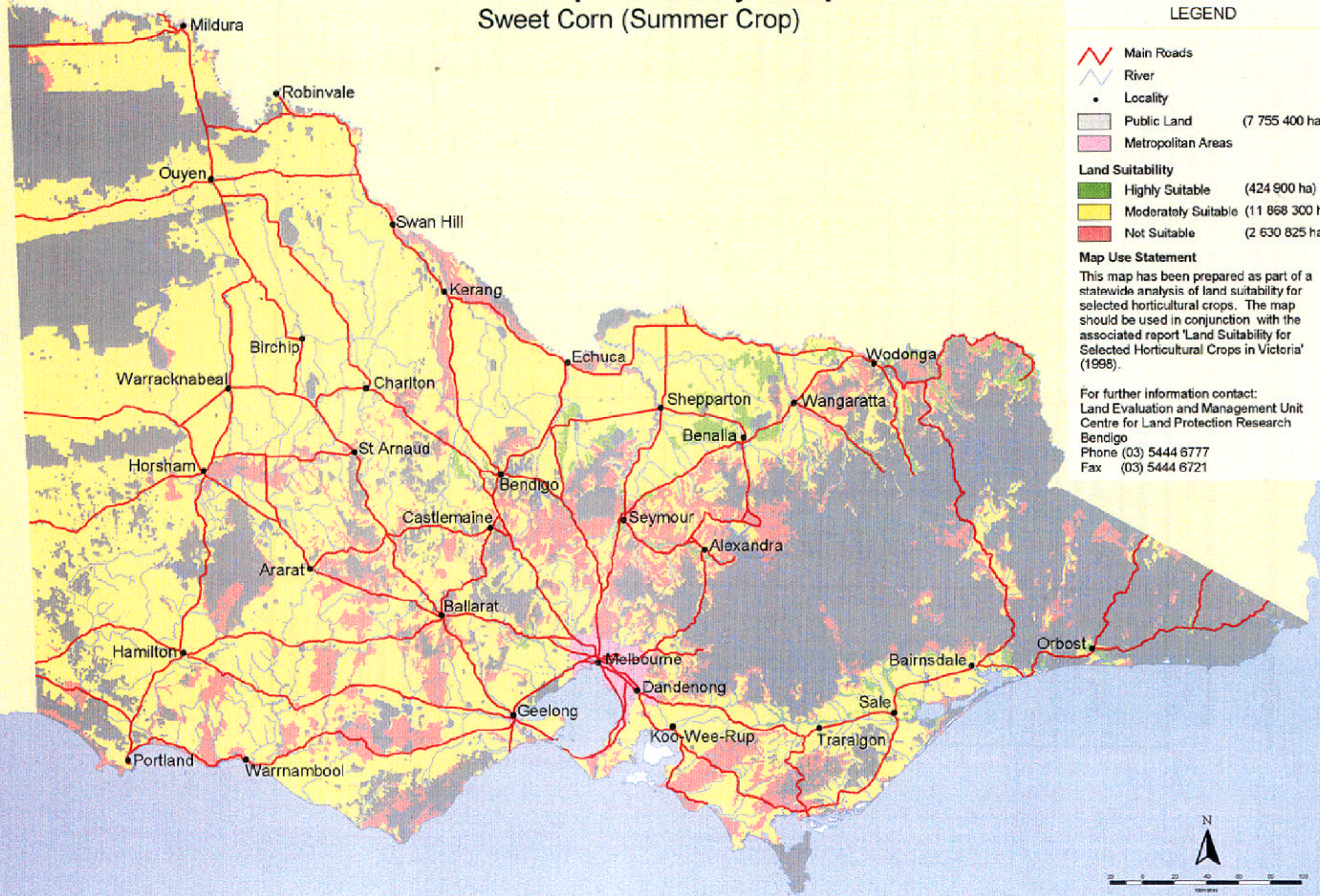
Sweet Corn (Summer Crop)

LEGEND

-  Main Roads
-  River
-  Locality
-  Public Land (7 755 400 ha)
-  Metropolitan Areas
- Land Suitability**
-  Highly Suitable (424 900 ha)
-  Moderately Suitable (11 868 300 ha)
-  Not Suitable (2 630 825 ha)

Map Use Statement
 This map has been prepared as part of a statewide analysis of land suitability for selected horticultural crops. The map should be used in conjunction with the associated report 'Land Suitability for Selected Horticultural Crops in Victoria' (1998).

For further information contact:
 Land Evaluation and Management Unit
 Centre for Land Protection Research
 Bendigo
 Phone (03) 5444 6777
 Fax (03) 5444 6721



Scale 1:3 250 000

Map 4.10 Statewide crop suitability - sweet corn (summer crop).



Centre for Land Protection Research