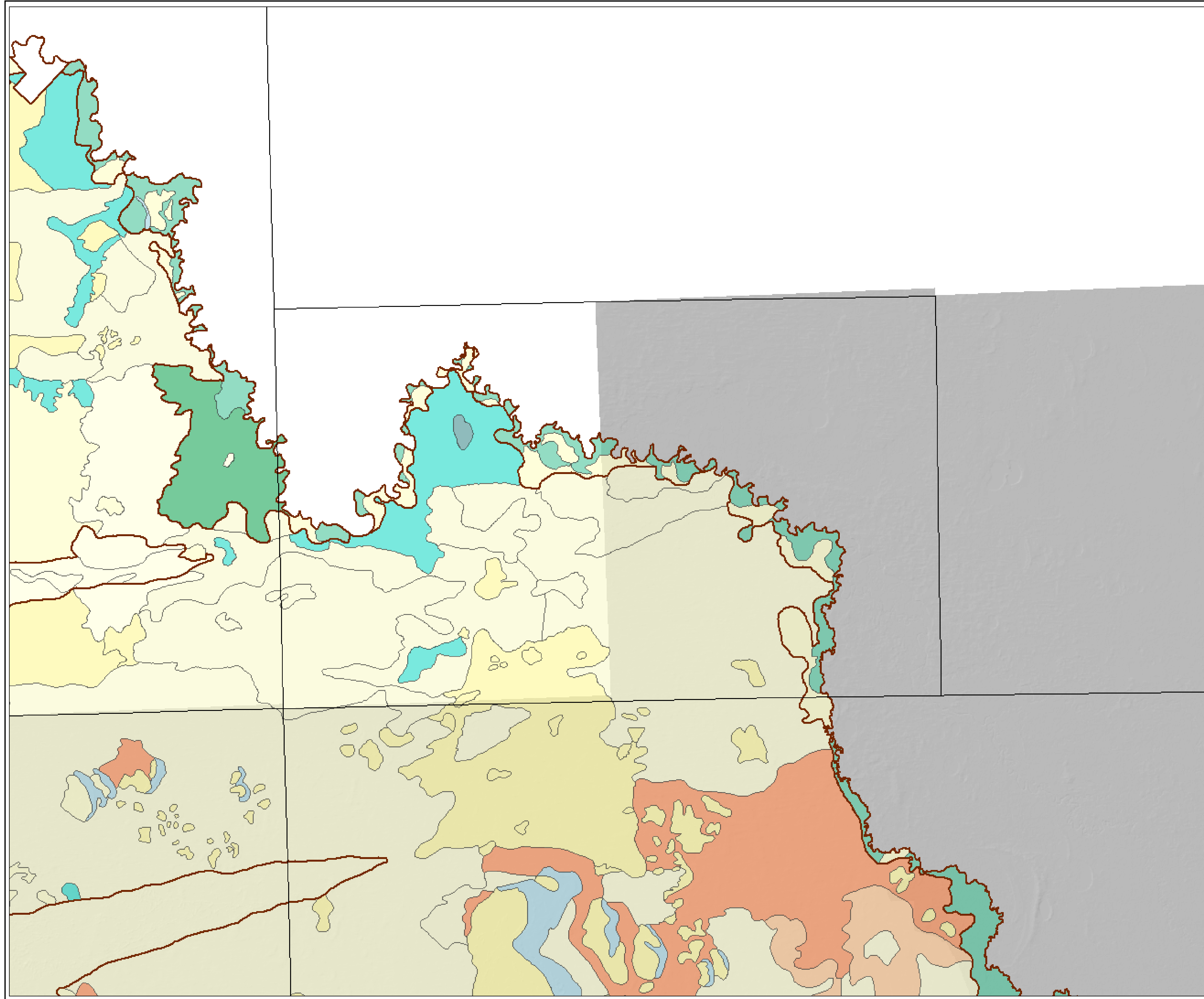
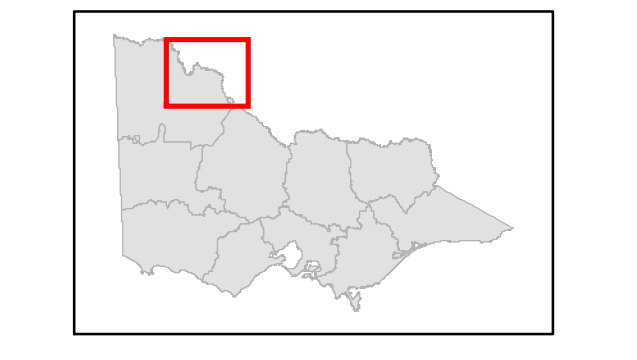
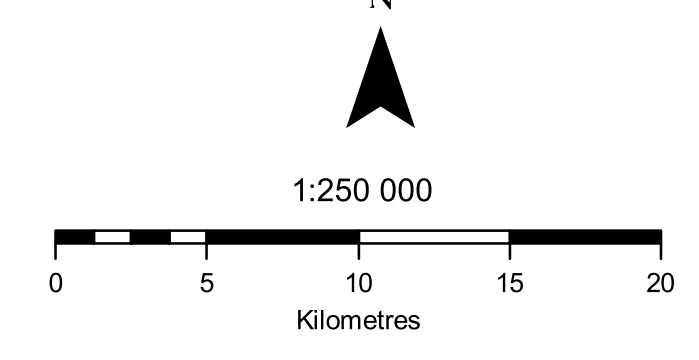
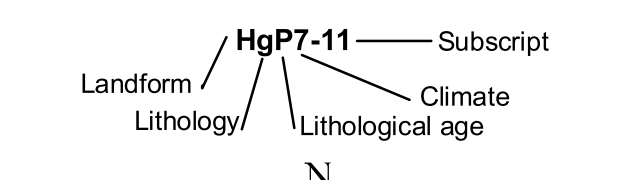


Landsystems version 3
BALRANALD



- Freeway
- Highway
- Arterial
- Sub-arterial
- Collector
- Local
- Main river
- Area subject to inundation
- Lake/Dam
- Mangroves
- Salt lake
- Salt pan; Sewerage
- Swamp
- Tile boundary
- 2nd Tier geomorphic units

- Landform**
- Dune, Plain
 - Dune, Plain, Rise
 - Dune, Rise
 - Present flood plain
 - Flood plain, dune
 - Flood plain, Swamp
 - Hill (relative relief 90-300m)
 - Hill, Mountain
 - Low Hill (relative relief 30-90m)
 - Low Hill, Dune
 - Low Hill, Hill
 - Low Hill, Rise
 - Mountain (relative relief > 300m)
 - Mountain, Hill
 - Plain above flood level (relative relief < 9m)
 - Plain, Coastal Complex
 - Plain, Dune
 - Plain, Dune, Rise
 - Plain, Rise
 - Plain, Rise, Dune
 - Rise (relative relief 9 - 30m)
 - Rise, Low Hill
 - Rise, Plain
 - Rise, Plain, Coastal
 - Rise, Plain, Dune
 - Swamp, lunette/water body complex
 - Swamp, Plain



Additional information

Base data such as roads, rivers, (1:100 000) towns, CMA boundaries, landsystems (1:250 000) are sourced from DSE/DPI Corporate Geospatial Data Library.

This map may be of assistance to you but the state of Victoria and its employees do not guarantee that the map is without flaw of any kind or is wholly appropriate for your particular purposes and therefore disclaims all liability for any error, loss or other consequence which may arise from you relying on any information in this map.

Map produced May 2004
Copyright © The State of Victoria
Department of Primary Industries, 2004

