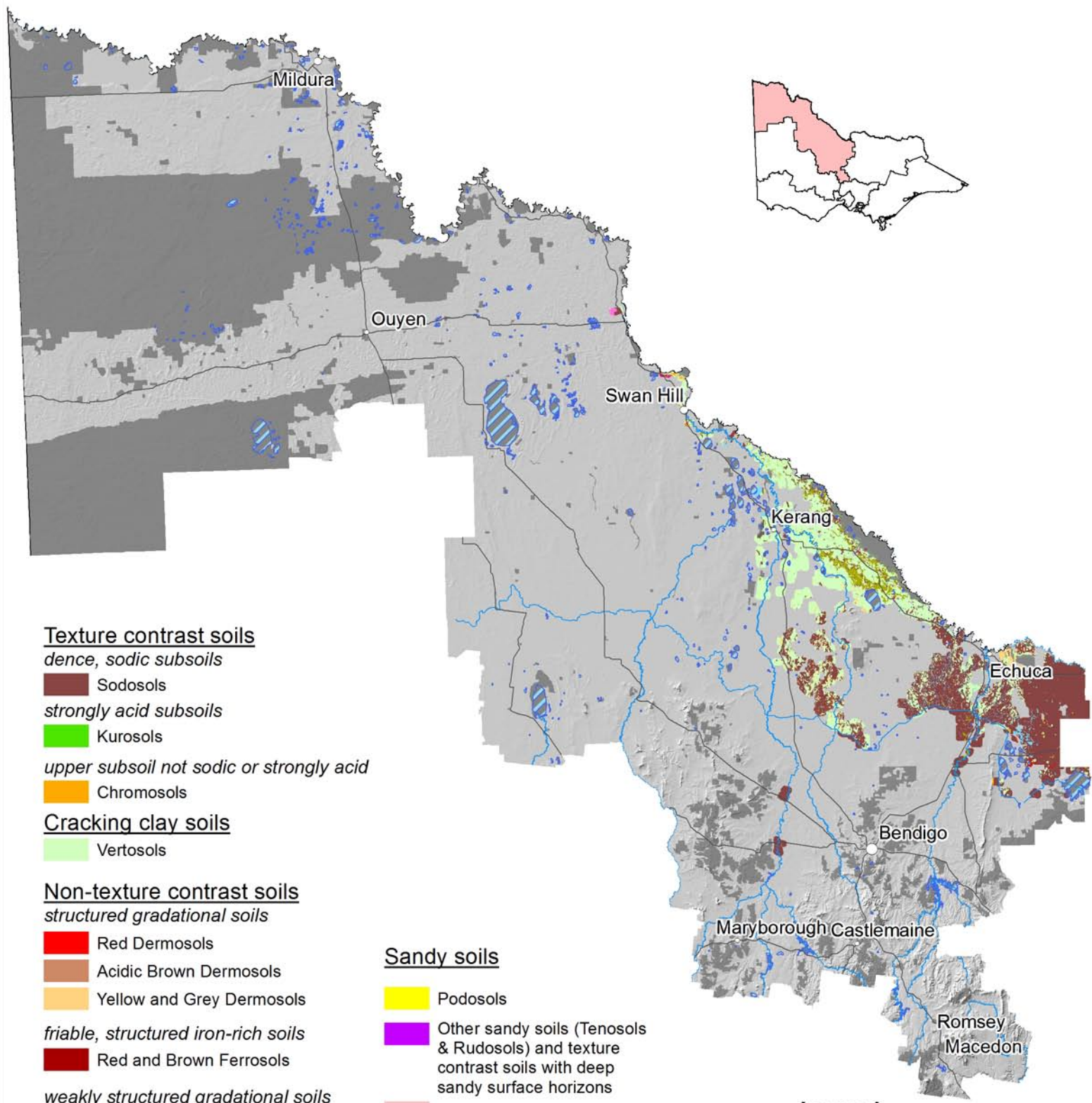


# Dairy Soils - Mallee Region



## Texture contrast soils

*dence, sodic subsoils*

Sodosols

*strongly acid subsoils*

Kurosols

*upper subsoil not sodic or strongly acid*

Chromosols

## Cracking clay soils

Vertosols

## Non-texture contrast soils

*structured gradational soils*

Red Dermosols

Acidic Brown Dermosols

Yellow and Grey Dermosols

*friable, structured iron-rich soils*

Red and Brown Ferrosols

*weakly structured gradational soils*

Kandosols

*calcareous gradational soils*

Kandosols

Kandosols

## Sandy soils

Podosols

Other sandy soils (Tenosols & Rudosols) and texture contrast soils with deep sandy surface horizons

Podosols

## Shallow stony soils

Shallow, stony soils

## Wet soils

Hydrosols

## Legend

- Major Towns
- Major Roads
- Major and Moderate Rivers
- Public Land
- Water bodies

