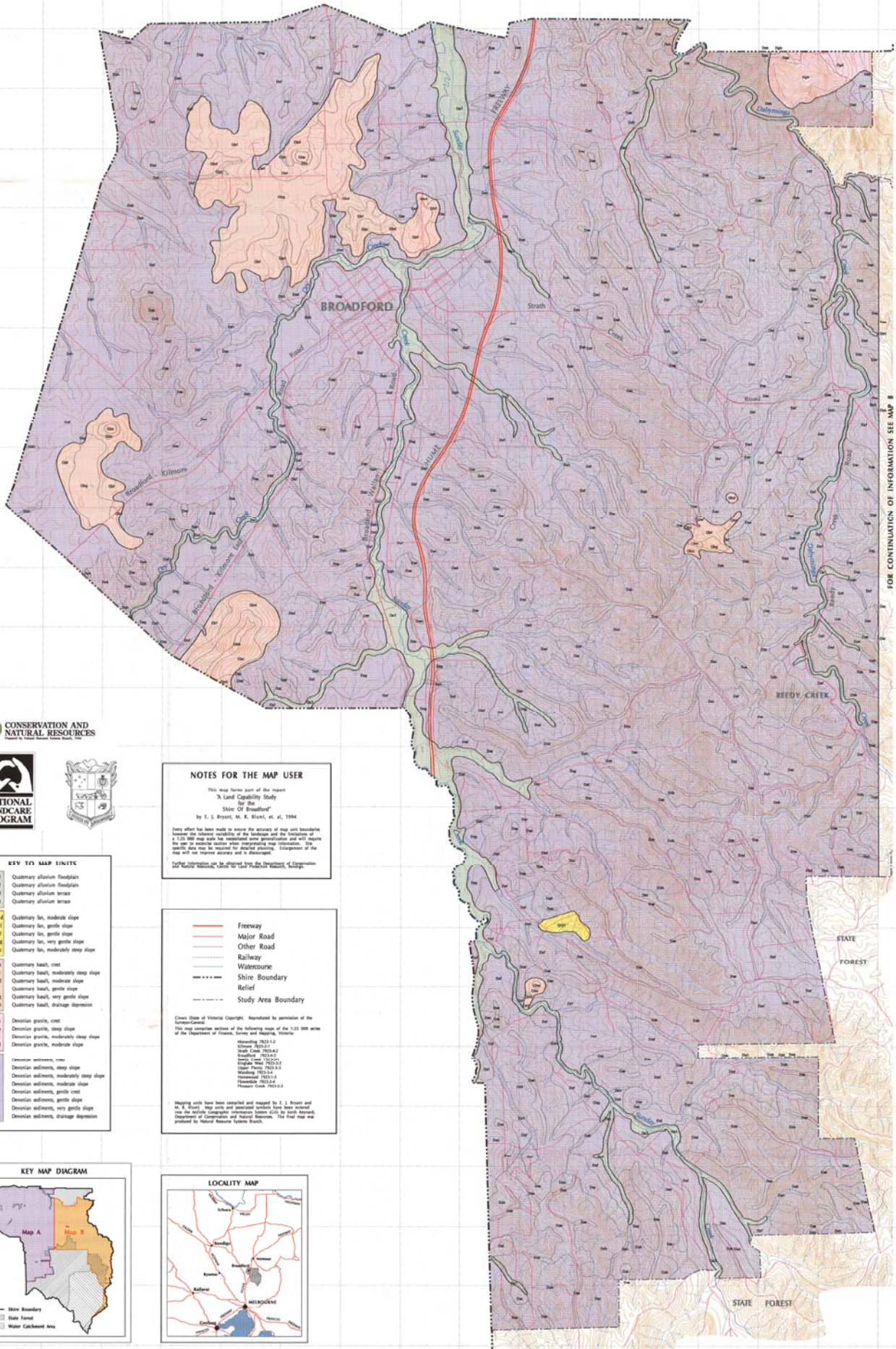


A LAND CAPABILITY STUDY for the SHIRE of BROADFORD

Map 1a: Map Units

This map provides the basis for land capability assessment. A Map Unit is an area of land that is identified by the geology of the parent material, slope and soil type, and is distinct from adjacent Map Units. Within a Map Unit the land use capability and response to management is considered to be uniform.



FOR CONTINUATION OF INFORMATION SEE MAP 8



NOTES FOR THE MAP USER

This map forms part of the report
 "A Land Capability Study
 for the
 Shire Of Broadford"
 by E. J. Bryant, M. R. Sturt, et al, 1994

Every effort has been made to ensure the accuracy of map and boundaries between the various capabilities of the landscape and the delineation of the use to various sections when interpreting map information. The specific data may be required for detailed information. The map will not replace accuracy and is designed for general information only. An attempt will be made to correct any errors.

For further information on the Shire of Broadford, the Department of Conservation and Natural Resources, 100 Sturt Street, Broadford, Victoria 3643.

- Freeway
- Major Road
- Other Road
- Railway
- Watercourse
- Shire Boundary
- Relief
- Study Area Boundary

Copyright of Victoria Copyright. Reproduced by permission of the Department of Conservation and Natural Resources, 100 Sturt Street, Broadford, Victoria 3643.

This map comprises sections of the following maps of the 1:50 000 scale of the Department of Mines, Energy and Geology, Victoria:

- Murray 2023-1-2
- Murray 2023-1-3
- South Coast 2023-1-2
- South Coast 2023-1-3
- Upper Peninsula 2023-1-2
- Warrumbungle 2023-1-1
- Warrumbungle 2023-1-2
- Warrumbungle 2023-1-3
- Warrumbungle 2023-1-4

Mapping units have been compiled and mapped by E. J. Bryant and M. R. Sturt. Map units and associated numbers have been entered into the National Landcare System Data for the Shire of Broadford, a Department of Conservation and Natural Resources. The final map was produced by National Resource Systems Branch.

KEY TO MAP UNITS

Qa1	Quaternary alluvium floodplains
Qa2	Quaternary alluvium floodplains
Qa3	Quaternary alluvium terrace
Qa4	Quaternary alluvium terrace
Qf1	Quaternary fan, moderate slope
Qf2	Quaternary fan, gentle slope
Qf3	Quaternary fan, very gentle slope
Qf4	Quaternary fan, moderately steep slope
Qb1	Quaternary basalt, crest
Qb2	Quaternary basalt, moderately steep slope
Qb3	Quaternary basalt, moderate slope
Qb4	Quaternary basalt, gentle slope
Qb5	Quaternary basalt, very gentle slope
Qb6	Quaternary basalt, drainage depression
Dp1	Devonian granite, crest
Dp2	Devonian granite, steep slope
Dp3	Devonian granite, moderately steep slope
Dp4	Devonian granite, moderate slope
Df1	Devonian sediment, crest
Df2	Devonian sediment, steep slope
Df3	Devonian sediment, moderately steep slope
Df4	Devonian sediment, moderate slope
Df5	Devonian sediment, gentle crest
Df6	Devonian sediment, gentle slope
Df7	Devonian sediment, very gentle slope
Df8	Devonian sediment, drainage depression

