

## **ACKNOWLEDGEMENTS**

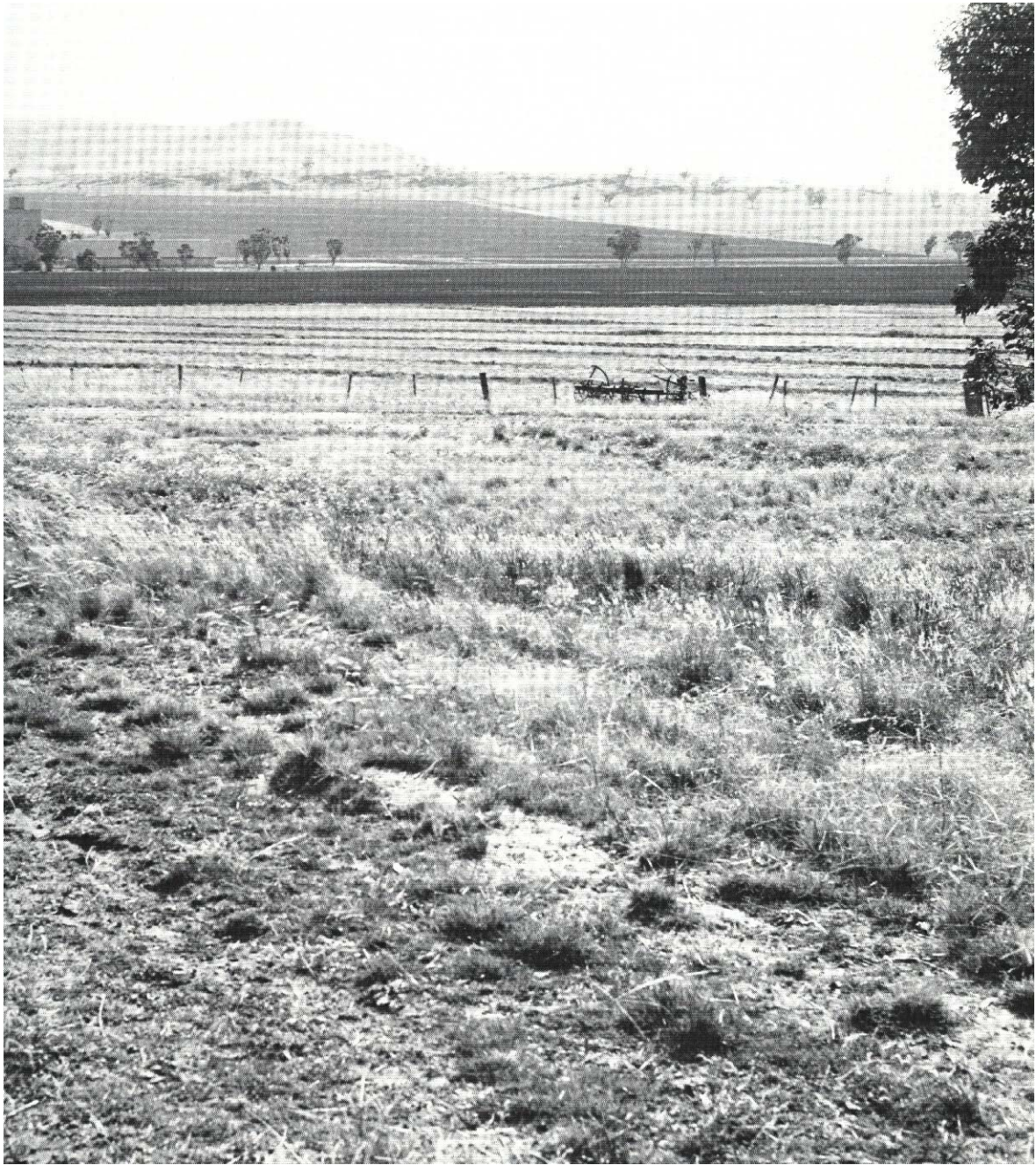
Grateful acknowledgement is made to all who assisted with this report. It is only possible to mention those that have been more directly involved.

Mr T. I. Leslie directed the laboratory analysis, Mr B. A. Young standardised the text, prepared maps, selected photographs and compiled the reference list. Officers in the Bendigo region and Ararat district of the Soil Conservation Authority Field Operations Division assisted in describing and sampling the selected soils. Miss Carmel Toohey did the initial preparation for the tables and figures in the report. Miss Linda Caruana and Miss Lyn Matthews prepared the block diagrams. Miss Lorraine Smith typed the many drafts of the report and Miss Kerry Pope the final copy.

The Meteorological Bureau, the Forests Commission of Victoria and the State Rivers and Water Supply Commission provided the most recent information available for the Avoca River catchment.

Mrs Yvonne Roberts was the technical editor.

Gently undulating land in the northern part of the Avoca river catchment supports cropping and grazing. The rugged form of Mount Buckrabanyule appears in the distance.



*Gently undulating land in the northern part of the Avoca River catchment supports cropping and grazing. The rugged form of Mount Buckrabanyule appears in the distance.*