

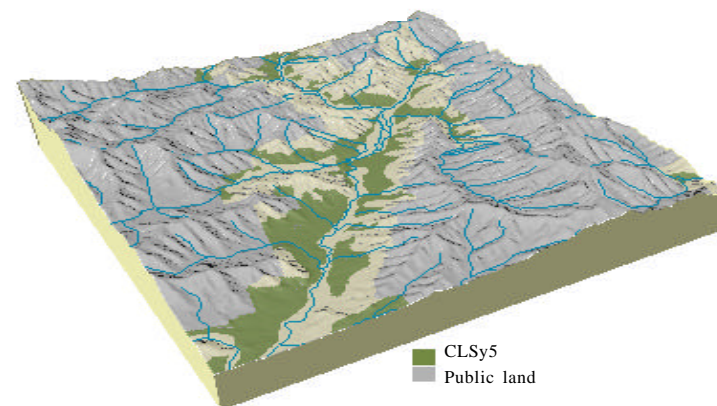
Soil landform unit: CLSy5; Colluvium derived from Ordovician sediments, type 5, Upper Murray

Landform pattern Rises, Low hills
 Elevation (m) 800-950
 Annual rainfall (mm) 850-1100
 Geomorphic unit 1.3.4 Eastern Uplands; Ridges, Valleys and Hills; Enclosed Low Hills
 Geology Colluvium and alluvium from associated Ordovician sediments

Locality diagram



Position in landscape



Landform component	1	2
Landform element	Moderate to gentle slopes	Lower slopes
Slope range (%)	3-20	0-3
Site drainage	Moderately well drained	Very poor
Rock outcrop	Nil	Nil
Soil description	Brown and red texture contrast soils, hardsetting, brown gradational soils	Dark texture contrast soils, grey gradational soils
Present land use	Grazing, conservation	Grazing, conservation
Susceptibility to erosion	Sheet and rill: Moderate	Sheet: Moderate
	Gully: Moderate	Gully: High
	Landslip: Moderate	Landslip: Low
	Wind: Moderate	Wind: Low
Native vegetation	<i>Eucalyptus radiata</i> , <i>E. dives</i> , <i>E. macrorhynca</i>	<i>E. radiata</i> , <i>E. dives</i> , <i>E. macrorhynca</i>