

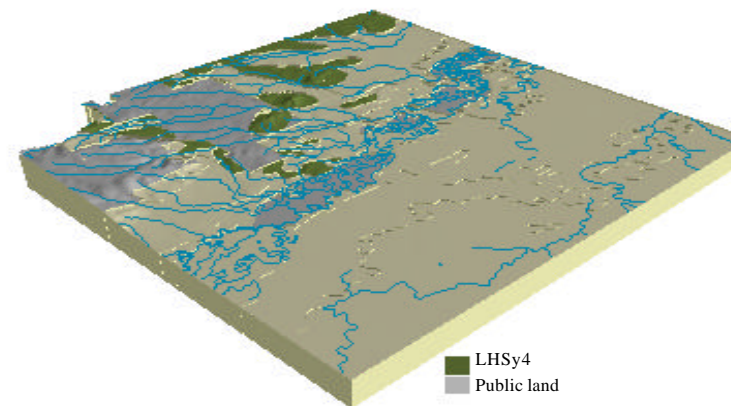
**Soil landform unit: LHSy4: Low hills on Ordovician sediments, type 4, northern footslopes**

Landform pattern      Low hills  
 Elevation (m)        120-500  
 Annual rainfall (mm)   500-850  
 Geomorphic unit      1.3.3 Eastern Uplands; Ridges, Valleys and Hills; Outlying Low Hills  
 Geology                Ordovician sediments, associated colluvium and alluvium

Locality diagram



Position in landscape



Landform component	1	2	3
Landform element	Upper and mid slopes	Gentle to moderate mid slopes	Gentle slopes and flats
Slope range (%)	10-20	3-15	0-6
Site drainage	Well drained	Imperfectly drained	Imperfectly drained
Rock outcrop	Nil	Nil	Nil
Soil description	Stony red texture contrast soils and stony red gradational soils	Brown, yellow and grey sodic texture contrast soils and grey gradational soils	Red texture contrast soils and red and grey gradational soils
Present land use	Grazing, plantations	Grazing, plantations	Grazing, fodder cropping
Susceptibility to erosion	Sheet and rill: High	Sheet and rill: Very high	Sheet and rill: High
	Gully: Moderate	Gully: High	Gully: Moderate
	Landslip: Low	Landslip: Very low	Landslip: Low
	Wind: High	Wind: High	Wind: Moderate
Native vegetation	<i>Eucalyptus dives</i> , <i>E. microcarpa</i> , <i>E. macrorhyncha</i> , <i>E. sideroxylon</i> , <i>E. albens</i>	<i>E. microcarpa</i> , <i>E. macrorhyncha</i> , <i>E. sideroxylon</i> , <i>E. albens</i> , <i>E. bridgesiana</i>	<i>E. microcarpa</i> , <i>E. macrorhyncha</i> , <i>E. sideroxylon</i> , <i>E. albens</i> , <i>E. bridgesiana</i> , <i>E. camaldulensis</i>