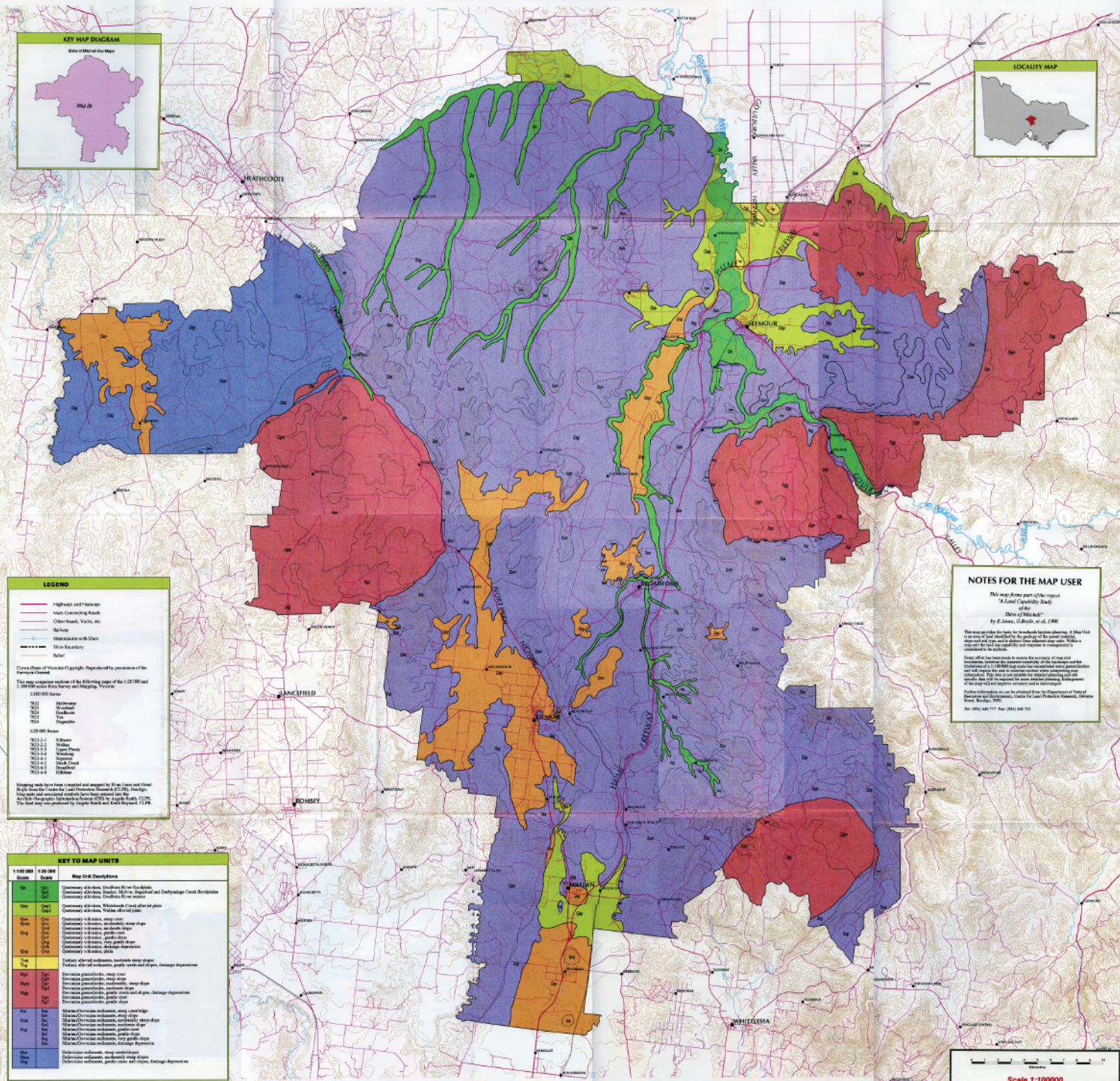


A LAND CAPABILITY STUDY of the SHIRE of MITCHELL

Map 2a: Map Units of the Shire of Mitchell



LEGEND

- Highways and Freeways
- Main Connecting Roads
- Other Roads, Tracks, etc.
- Schools
- Waterways with Dams
- Shire Boundary

Source: State of Victoria Copyright. Reproduced by permission of the Reference Council.

Map was compiled on the basis of the following maps of the 1:250 000 and 1:500 000 scales from Survey and Mapping, Victoria:

1:250 000 Scale

- 7021 Melbourne
- 7022 Melbourne
- 7023 Melbourne
- 7024 Melbourne

1:500 000 Scale

- 7023.0 Melbourne
- 7023.1 Melbourne
- 7023.2 Melbourne
- 7023.3 Melbourne
- 7023.4 Melbourne
- 7023.5 Melbourne
- 7023.6 Melbourne
- 7023.7 Melbourne
- 7023.8 Melbourne
- 7023.9 Melbourne

Shading marks have been compiled and assigned to State names and class numbers on the basis of the following maps of the 1:250 000 and 1:500 000 scales from Survey and Mapping, Victoria:

1:250 000 Scale

- 7021 Melbourne
- 7022 Melbourne
- 7023 Melbourne
- 7024 Melbourne

1:500 000 Scale

- 7023.0 Melbourne
- 7023.1 Melbourne
- 7023.2 Melbourne
- 7023.3 Melbourne
- 7023.4 Melbourne
- 7023.5 Melbourne
- 7023.6 Melbourne
- 7023.7 Melbourne
- 7023.8 Melbourne
- 7023.9 Melbourne

The final map was produced by Angela Bunn and Gail Reynolds, CLP.

NOTES FOR THE MAP USER

This map forms part of the report
**"A Land Capability Study
of the
Shire of Mitchell"**
by E. Jones, G. Bunn and G. Reynolds, 1990

This map provides the basis for land-use planning. It is not to be used as a guide to the quality of the land, or as a guide to the suitability of the land for any particular use. It is not to be used as a guide to the suitability of the land for any particular use. It is not to be used as a guide to the suitability of the land for any particular use.

Other information on the Shire of Mitchell can be obtained from the Department of Land, Water and Environmental Conservation, Centre for Land Protection Research, Centre Street, Bendigo, VIC.

See (051) 88177 Fax (051) 88173

KEY TO MAP UNITS

1:100 000 Scale	1:250 000 Scale	Map Unit Descriptions
0a	0a	Ordinary alluvium, sandstone to fine sandstone
0b	0b	Ordinary alluvium, sandstone, 20 to 30 m thick and Dunderberg Creek floodplain
0c	0c	Ordinary alluvium, sandstone, 20 to 30 m thick and Dunderberg Creek floodplain
0d	0d	Ordinary alluvium, sandstone, 20 to 30 m thick and Dunderberg Creek floodplain
0e	0e	Ordinary alluvium, sandstone, 20 to 30 m thick and Dunderberg Creek floodplain
0f	0f	Ordinary alluvium, sandstone, 20 to 30 m thick and Dunderberg Creek floodplain
0g	0g	Ordinary alluvium, sandstone, 20 to 30 m thick and Dunderberg Creek floodplain
0h	0h	Ordinary alluvium, sandstone, 20 to 30 m thick and Dunderberg Creek floodplain
0i	0i	Ordinary alluvium, sandstone, 20 to 30 m thick and Dunderberg Creek floodplain
0j	0j	Ordinary alluvium, sandstone, 20 to 30 m thick and Dunderberg Creek floodplain
0k	0k	Ordinary alluvium, sandstone, 20 to 30 m thick and Dunderberg Creek floodplain
0l	0l	Ordinary alluvium, sandstone, 20 to 30 m thick and Dunderberg Creek floodplain
0m	0m	Ordinary alluvium, sandstone, 20 to 30 m thick and Dunderberg Creek floodplain
0n	0n	Ordinary alluvium, sandstone, 20 to 30 m thick and Dunderberg Creek floodplain
0o	0o	Ordinary alluvium, sandstone, 20 to 30 m thick and Dunderberg Creek floodplain
0p	0p	Ordinary alluvium, sandstone, 20 to 30 m thick and Dunderberg Creek floodplain
0q	0q	Ordinary alluvium, sandstone, 20 to 30 m thick and Dunderberg Creek floodplain
0r	0r	Ordinary alluvium, sandstone, 20 to 30 m thick and Dunderberg Creek floodplain
0s	0s	Ordinary alluvium, sandstone, 20 to 30 m thick and Dunderberg Creek floodplain
0t	0t	Ordinary alluvium, sandstone, 20 to 30 m thick and Dunderberg Creek floodplain
0u	0u	Ordinary alluvium, sandstone, 20 to 30 m thick and Dunderberg Creek floodplain
0v	0v	Ordinary alluvium, sandstone, 20 to 30 m thick and Dunderberg Creek floodplain
0w	0w	Ordinary alluvium, sandstone, 20 to 30 m thick and Dunderberg Creek floodplain
0x	0x	Ordinary alluvium, sandstone, 20 to 30 m thick and Dunderberg Creek floodplain
0y	0y	Ordinary alluvium, sandstone, 20 to 30 m thick and Dunderberg Creek floodplain
0z	0z	Ordinary alluvium, sandstone, 20 to 30 m thick and Dunderberg Creek floodplain

Scale 1:100000