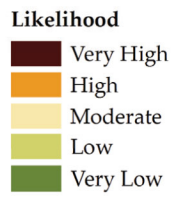
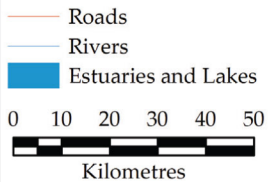
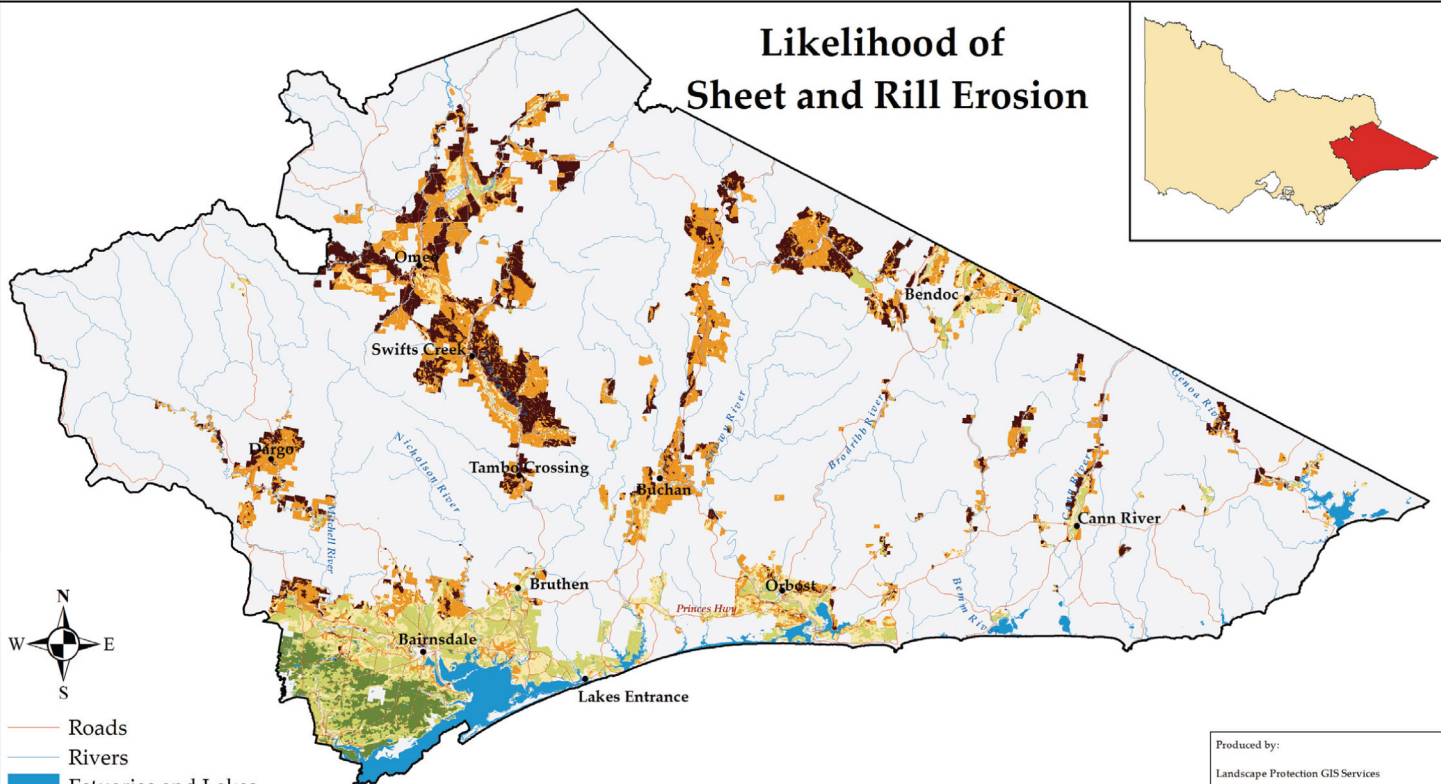


# Likelihood of Sheet and Rill Erosion



Produced by:  
Landscape Protection GIS Services

Base data from DPI Corporate Library  
Remainder derived from LUM  
Copyright: State of Victoria,  
Dept. Primary Industries, 2008.

Disclaimer:  
This publication may be of assistance to you  
but the State of Victoria and its employees do  
not guarantee that the publication is without  
flaw of any kind or is wholly appropriate for  
your particular purposes and therefore disclaims  
all liability for any error, loss or other  
consequence which may arise from you relying  
on any information in this publication.