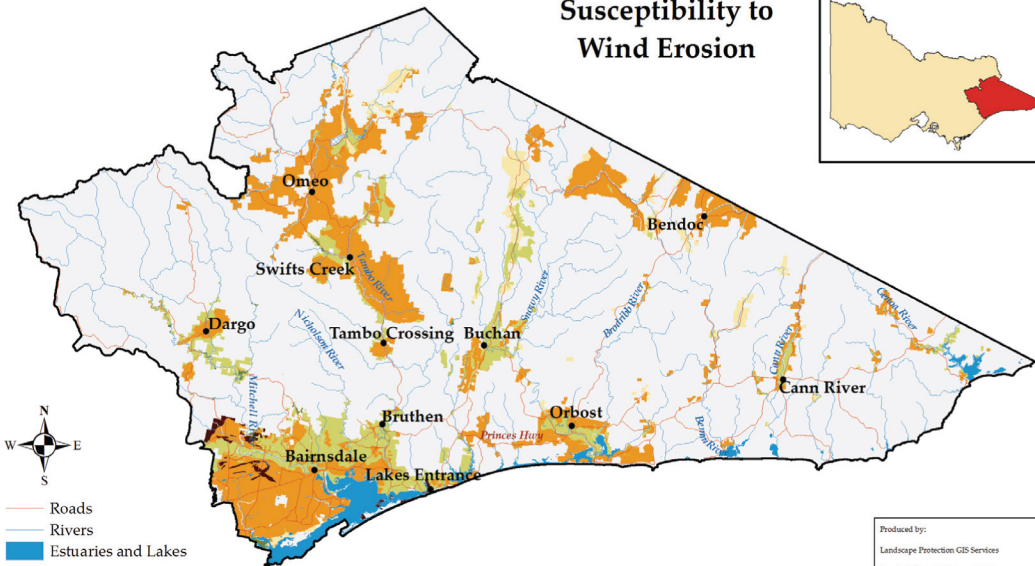
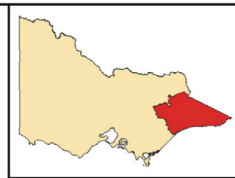
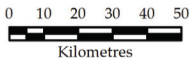


# Susceptibility to Wind Erosion



- Roads
- Rivers
- Estuaries and Lakes



## Susceptibility

- Very High
- High
- Moderate
- Low
- Very Low



Department of  
Primary Industries

Produced by:

Landscape Protection GIS Services

Base data from DPI Corporate Library  
Remainder derived from LUDM  
Copyright: State of Victoria,  
Dept. Primary Industries, 2008.

### Disclaimer:

This publication may be of assistance to you but the State of Victoria and its employees do not guarantee that the publication is without flaw of any kind or is wholly appropriate for your particular purposes and therefore disclaims all liability for any error, loss or other consequence which may arise from you relying on any information in this publication.