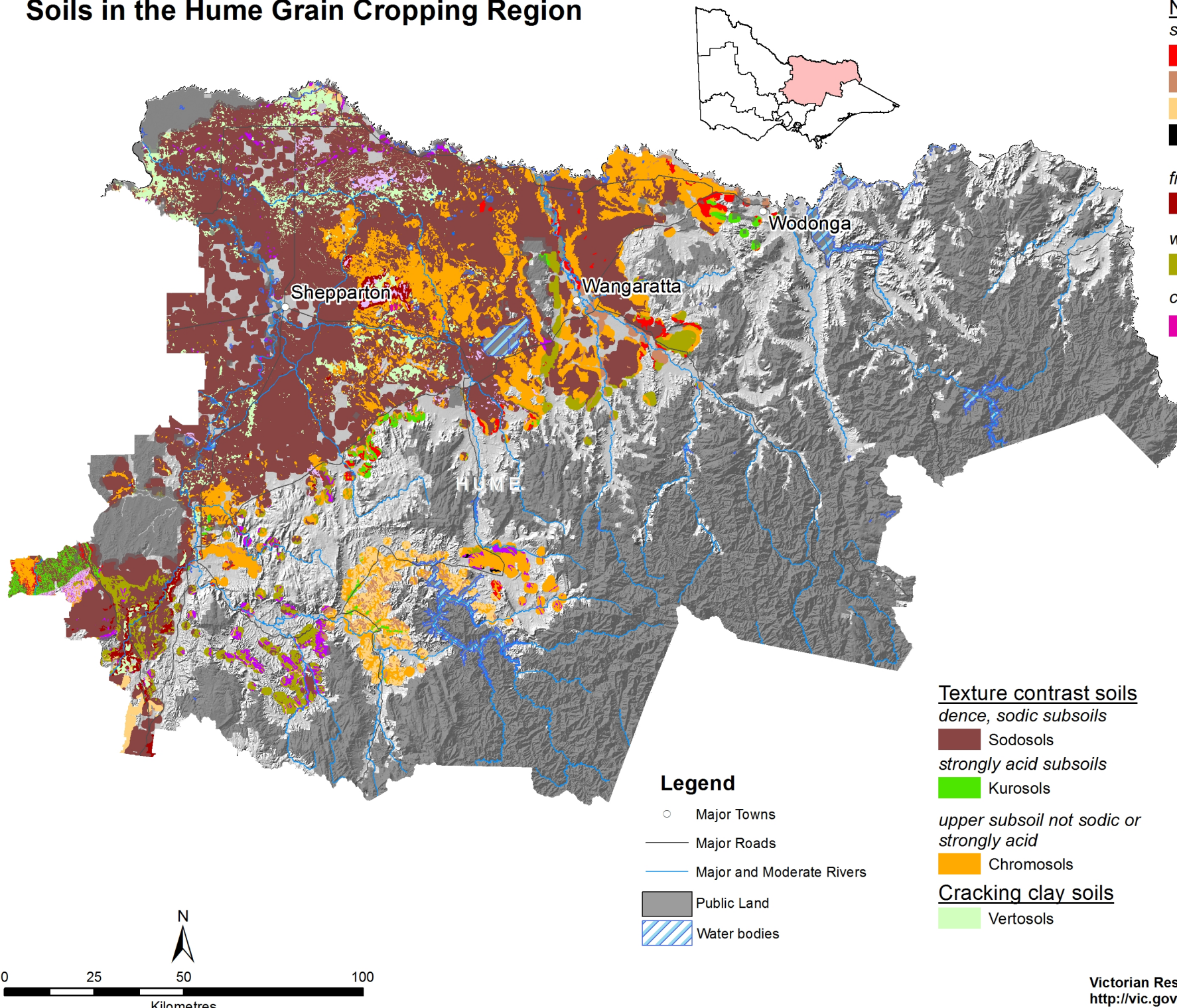


# Soils in the Hume Grain Cropping Region



## Non-texture contrast soils

- structured gradational soils*
- Red Dermosols
  - Acidic Brown Dermosols
  - Yellow and Grey Dermosols
  - Black Dermosols (some Ferrosols)
- friable, structured iron-rich soils*
- Red and Brown Ferrosols
- weakly structured gradational soils*
- Kandosols
- calcareous gradational soils*
- Calcarosols (heavy texture)

## Sandy soils

- Other sandy soils (Tenosols & Rudosols) and texture contrast soils with deep sandy surface horizons

## Shallow stony soils

- Shallow, stony soils

## Wet soils

- Hydrosols

## Texture contrast soils

- dence, sodic subsoils*
- Sodosols
- strongly acid subsoils*
- Kurosols
- upper subsoil not sodic or strongly acid*
- Chromosols
- Cracking clay soils
- Vertosols

## **Legend**

- Major Towns
- Major Roads
- Major and Moderate Rivers
- Public Land
- Water bodies

