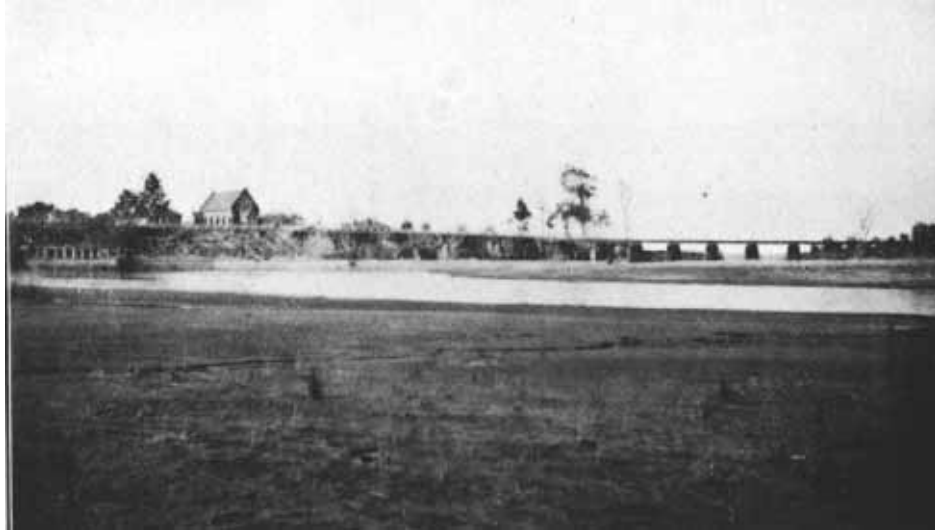


## ***Stream Erosion***

The illustrations depict common examples of stream erosion and demonstrate the necessity for systematic attention being given to the river systems throughout the State.



21. Avon River at Stratford. Most of this was once surveyed into small holdings, but is now only sand and shingle. Costly works have been necessary to protect the township and the bridge of the Prince's Highway.



22. High eroding bank, Avon River near Boisdale. Party is standing in lucerne paddock.



23. Avon River near Boisdale, showing a waste of sand and shingle twenty chains wide where formerly good land existed. The high eroding bank in the background marks the present edge of the flats, which are irrigated for lucerne and maize growing, and are worth £40 to £50 per acre.



24. A section of Nariel or Cudgewa Creek, in the Hume Catchment, Upper Murray, showing the typical lateral stream movement, eroding good flats on one side and leaving useless shingle beds and wattles on the other.



25. Near Coleraine, showing typical stream erosion and siltation.



26. Eaglehawk Creek, near Glengarry, Gippsland. It is said that this creek originally spread over a wide swampy area, and that a drain a few feet wide and deep was constructed to confine the flow. This has now scoured into a canyon up to 40 feet wide and 30 feet deep. The debris from this has nearly choked bridges on the main Traralgon-Maffra road and railway, and has smothered many acres of land.



27. Bullock Creek, north of Marong. The debris from this has silted up the creek lower down blocking bridge and increasing flooding problems on the flatter land.



28. The Bunyip River just below the Prince's Highway, showing erosion of flats, and also sandbanks on their way to silt up the Koo-wee-rup Main Canal.