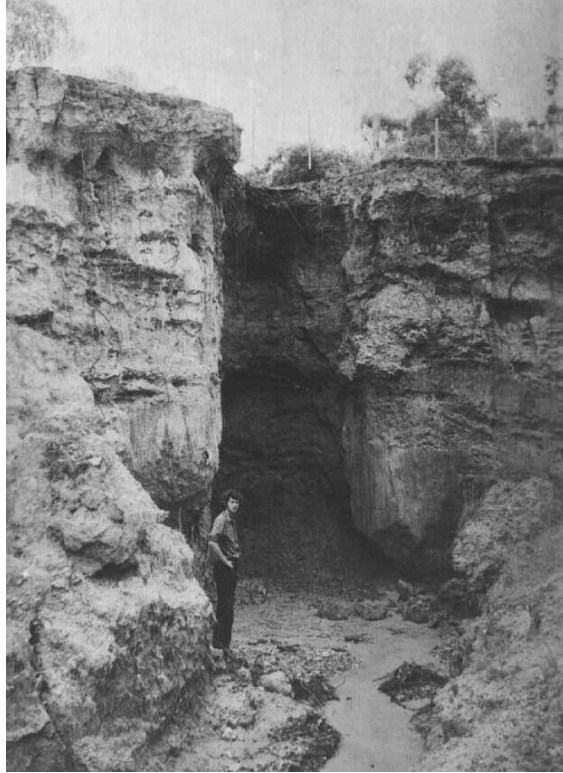




Plate 1. Trees killed by saline seepage at the foot of a hill



Plate 2. Scour gullies developed from rills on a salt pan



***Plate 3. The waterfall in this deep gully has caused only a little erosion
In 4 years. The slat was eroded by spalling and slaking.***



Plate 4. Undercutting of a head by diversion of the waterfall

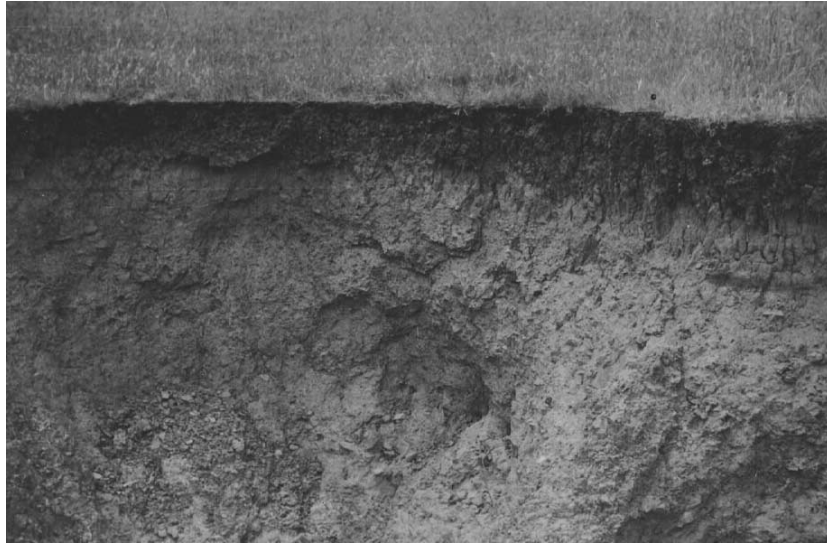


Plate 5. A gully head operating by spalling



Plate 6. Gully head operating by blockfall



Plate 7. Undermining of a hea by waterline earthflows after a flood



Plate 8. Basal extrusion sapping. Erosion is proceeding without surface runoff