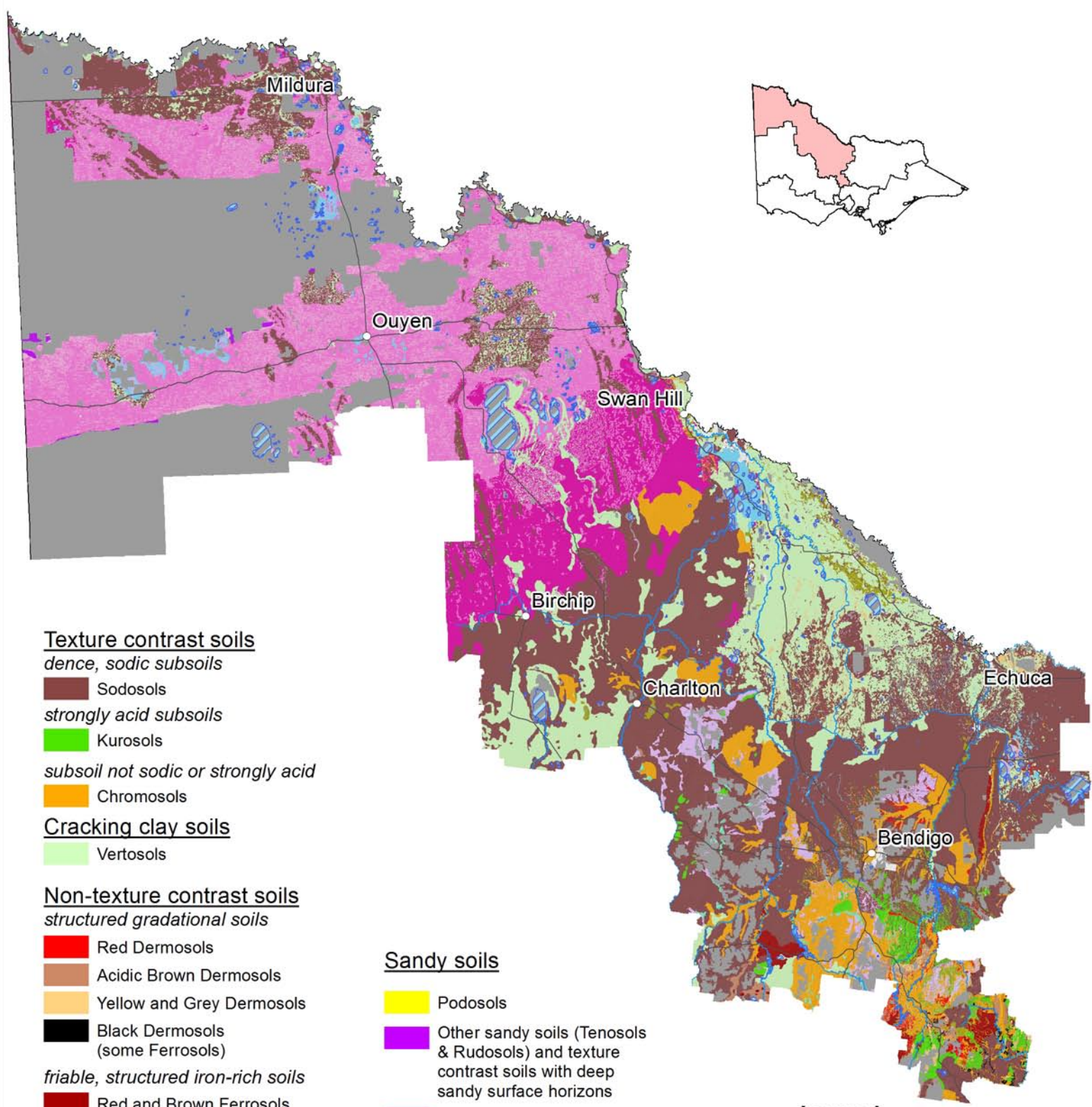



# Soils on Private Land - Loddon Mallee Region



## Texture contrast soils

*dence, sodic subsoils*

 Sodosols

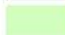
*strongly acid subsoils*

 Kurosols

*subsoil not sodic or strongly acid*

 Chromosols

## Cracking clay soils

 Vertosols

## Non-texture contrast soils

*structured gradational soils*


 Red Dermosols

 Acidic Brown Dermosols

 Yellow and Grey Dermosols

 Black Dermosols  
(some Ferrosols)


*friable, structured iron-rich soils*

 Red and Brown Ferrosols

*weakly structured gradational soils*

 Kandosols


*calcareous gradational soils*


 Calcarosols (medium texture)

 Calcarosols (heavy texture)

## Sandy soils

 Podosols


 Other sandy soils (Tenosols & Rudosols) and texture contrast soils with deep sandy surface horizons

 Calcareous sands

## Shallow stony soils

 Shallow, stony soils

## Wet soils

 Hydrosols

## Legend

 Major Towns

 Major Roads

 Major and Moderate Rivers

 Public Land

 Water bodies



0 25 50 100 150

Kilometres