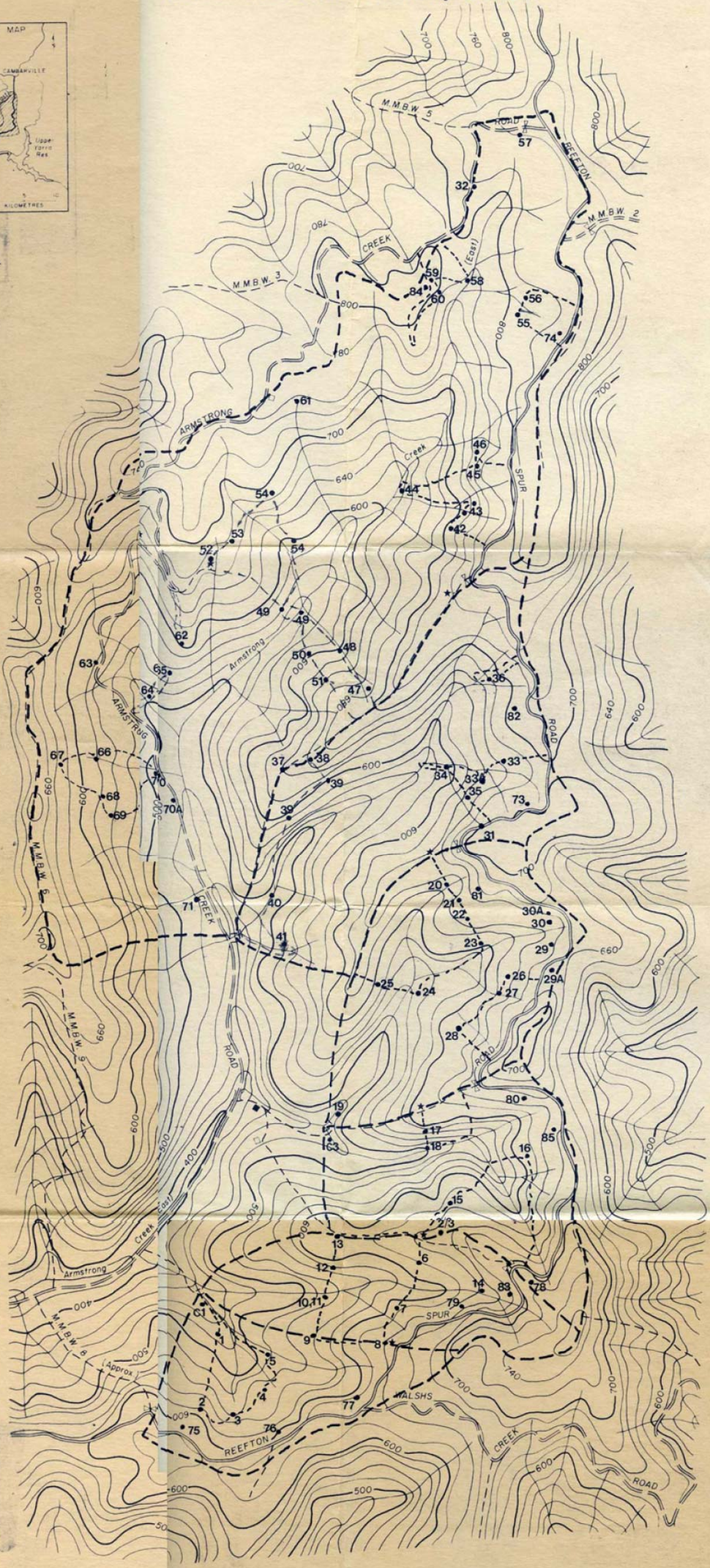
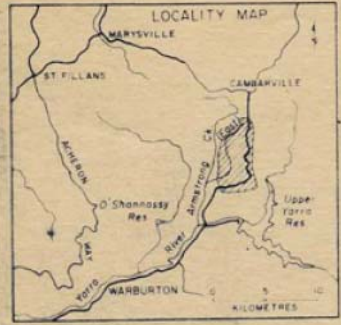


Map 3. Distribution of sample sites.



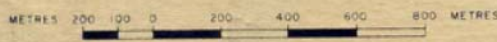
TRUE NORTH

- Weir
- Rain Gauge
- Meteorological Station
- Gate
- Shed

ORIGIN	
Base compilation by A.A.M. Additions by F.C.V. from photographs flown 1966, 1971	
REVISED	
ROAD CLASSIFICATION	
Sealed Road	
Surface Road	
Earth Road	
Track	

ARMSTRONG CREEK EXPERIMENTAL AREA

Parish of Manango
Scale 1:15 000



Contour Interval 20 Metres

NUMBERED GRID LINES INDICATE 1000 METRE INTERVALS OF THE AUSTRALIAN MAP GRID ZONE 55. GRID VALUES ARE SHOWN IN FULL ONLY AT THE SOUTH WEST CORNER OF THE SHEET.

FORESTS COMMISSION VICTORIA

79-G/742

SCA DRAWING No.