

Plate 1 – Map Unit: Tu (Tertiary, undulating)

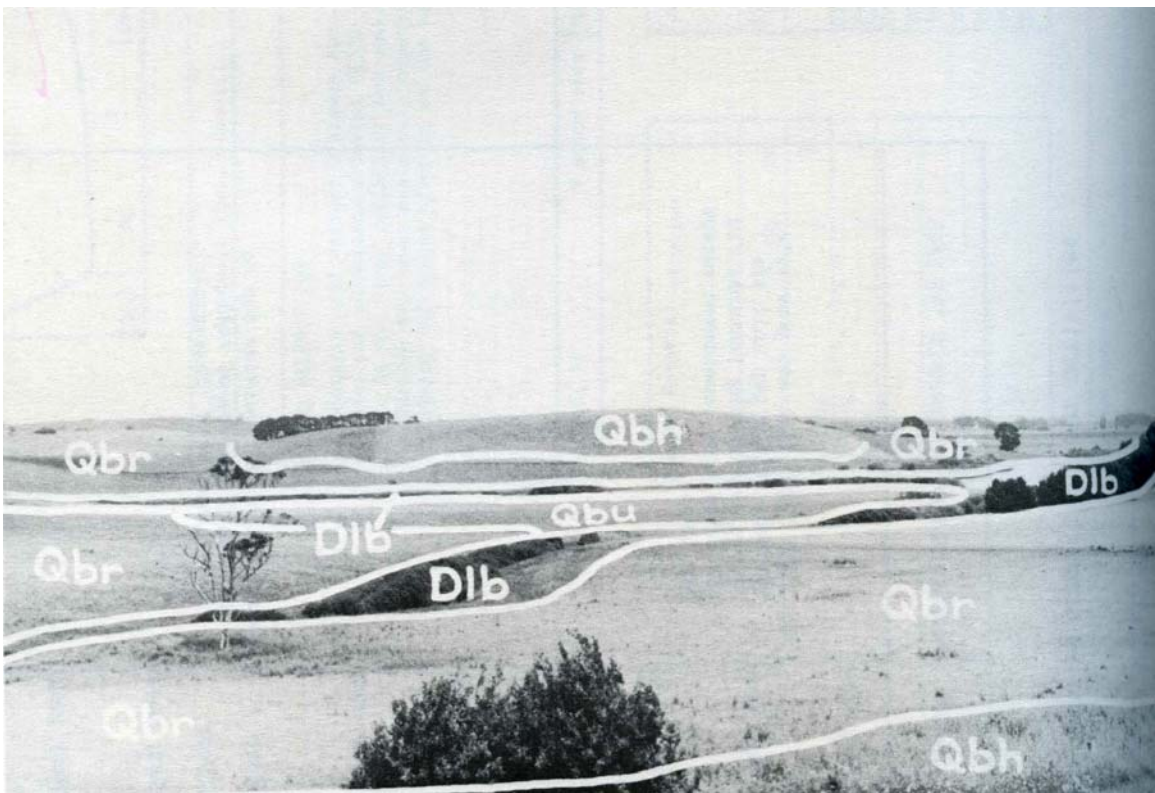


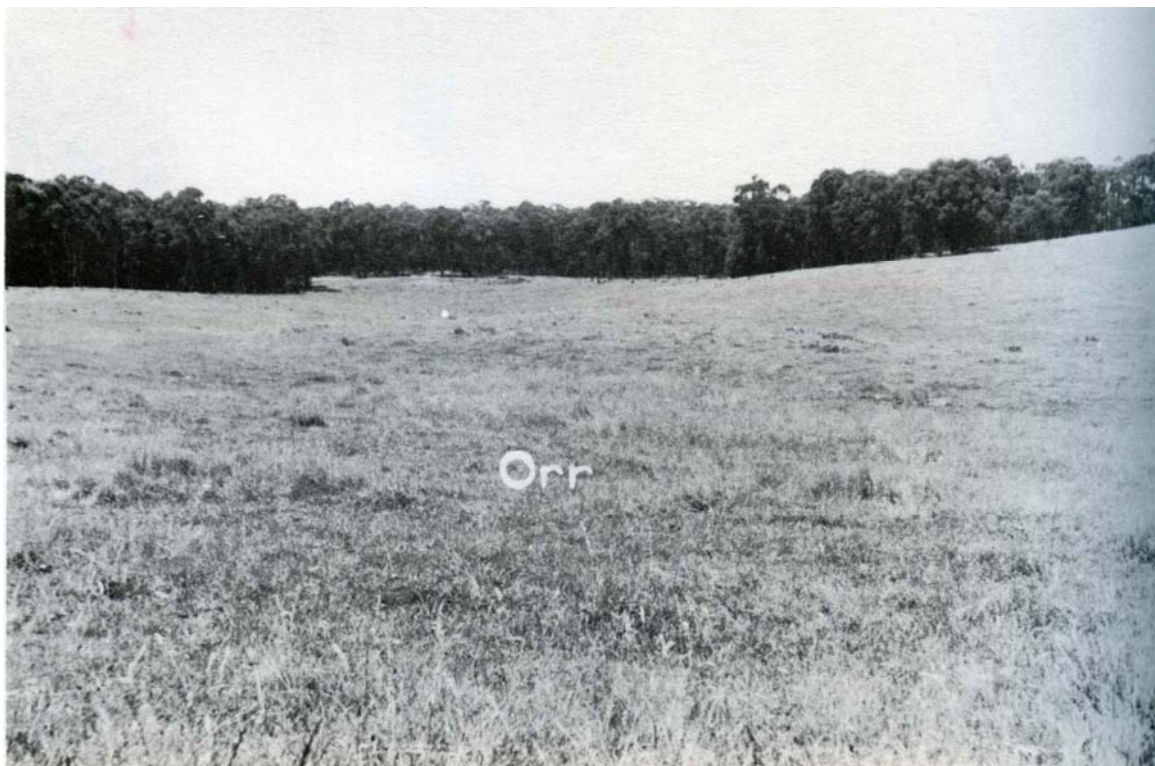
Plate 2 Map Units:  
Qbh (Quaternary basalt, hilly)  
Qbr (Quaternary basalt, rolling)  
Qbu (Quaternary basalt, undulating)  
Dlb (Drainage line, basalt)







**Plate 5 – Map Unit: Oru (Ordovician, undulating)**

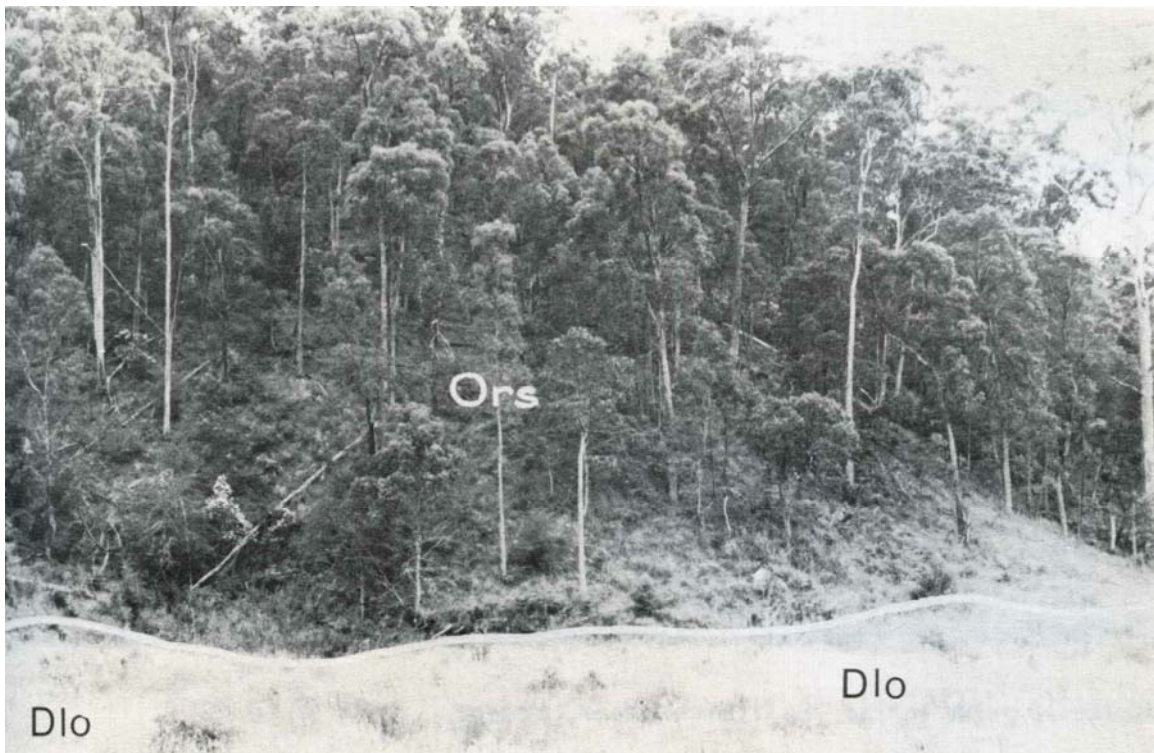


**Plate 6 – Map Unit: Orr (Ordovician, rolling)**



**Plate 7 – Map Unit:  
Orh (Ordovician, hilly)**

**Plate 8 (below) – Map Unit:  
Ors (Ordovician, steep)  
Dlo (Drainage line, ordovician)**





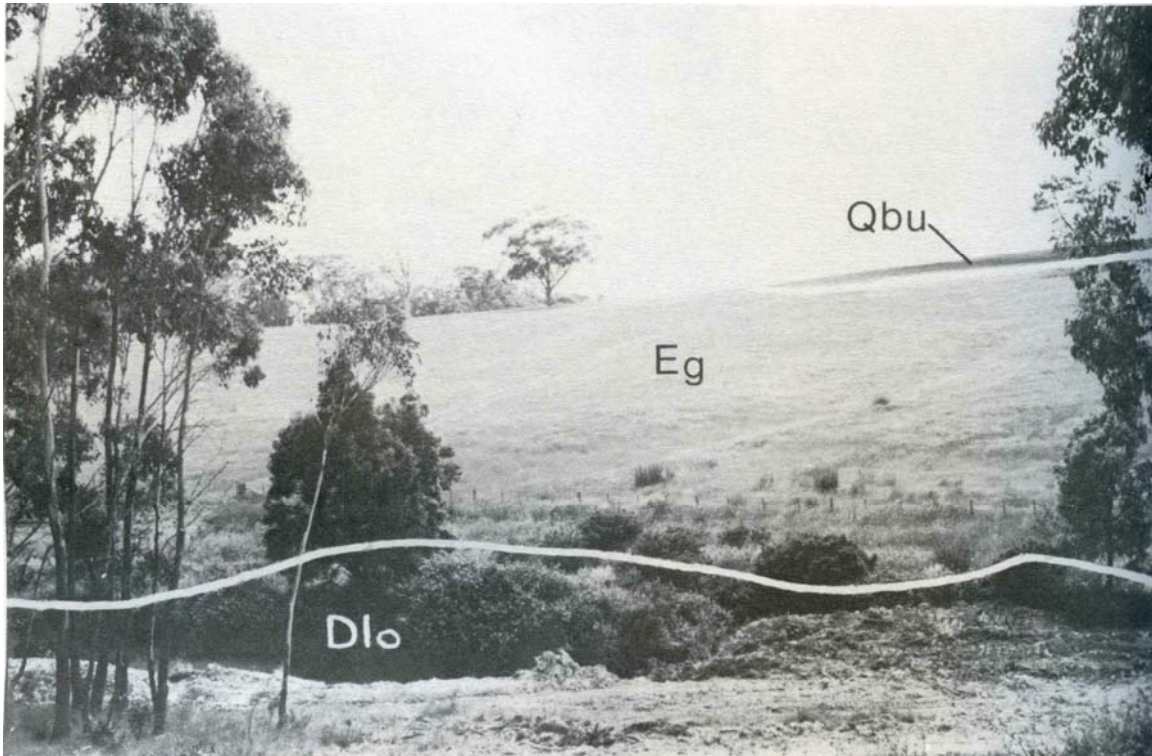


Plate 9 – Map Unit: Eg (Escarment, gentle)  
Dlo (Drainage line, ordovician)



Plate 10 – Map Unit: Es (Escarment, steep)