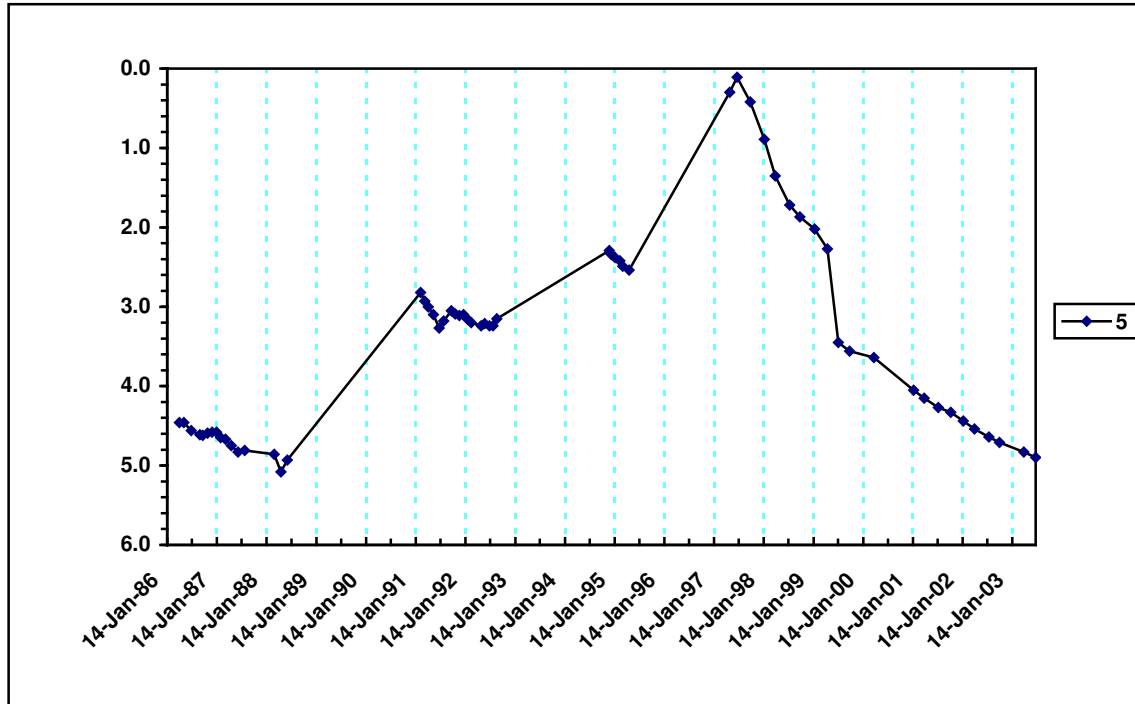


8.5 Groundwater Hydrographs

8.51 Avon-Richardson Hydrographs

Lake Buloke

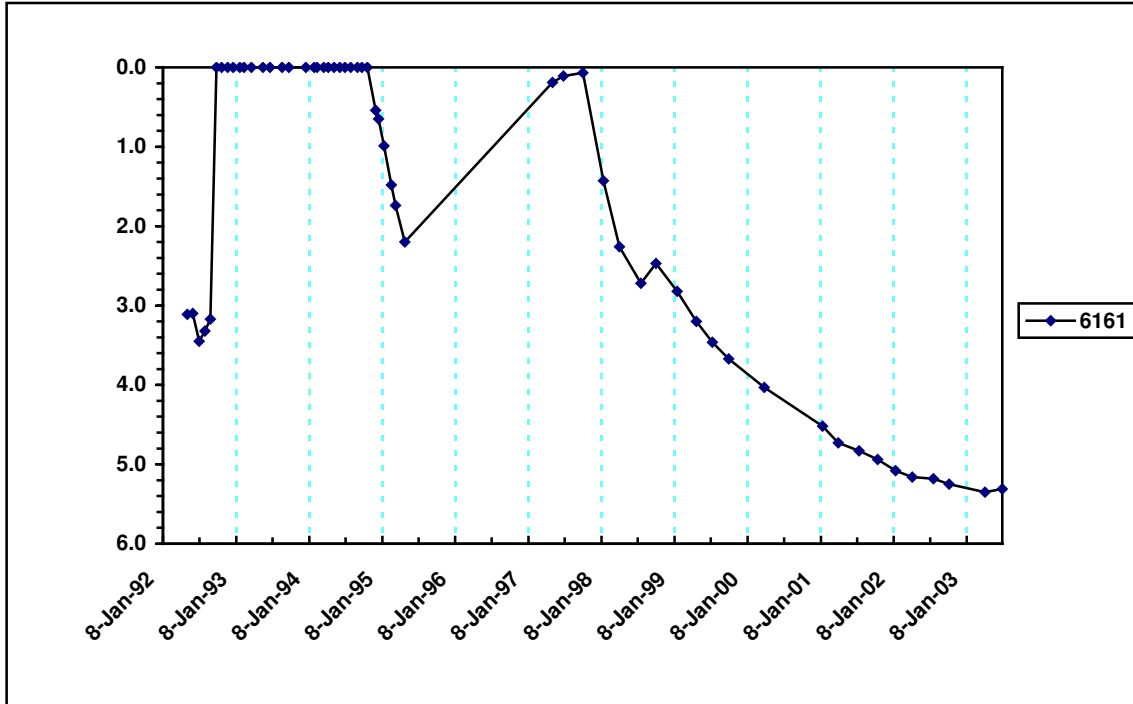
Bore number 5



CLPR No:	5	Bore Monitor	Damon Stemmer (CLPR)
Locality Description:	Lake Buloke		
LMU:	Lake Floodplain	Landscape Position:	Lower catchment
Geological Description:	Calivil Renmark Group Regional groundwater system		
Land Cover:	Dryland cropping and some sheep grazing		
Bore Depth:	10.5m	Average Rainfall:	300 mm/yr
Av. Water Depth 2002-2003:	-4.8 m	Salinity(EC):	5580 μ S/cm
Groundwater Trend:	Strong falling groundwater trend observed here. Strong response to seasonal rainfall events. Groundwater has been continuing to drop since Lake Buloke dried up in early 1998.		

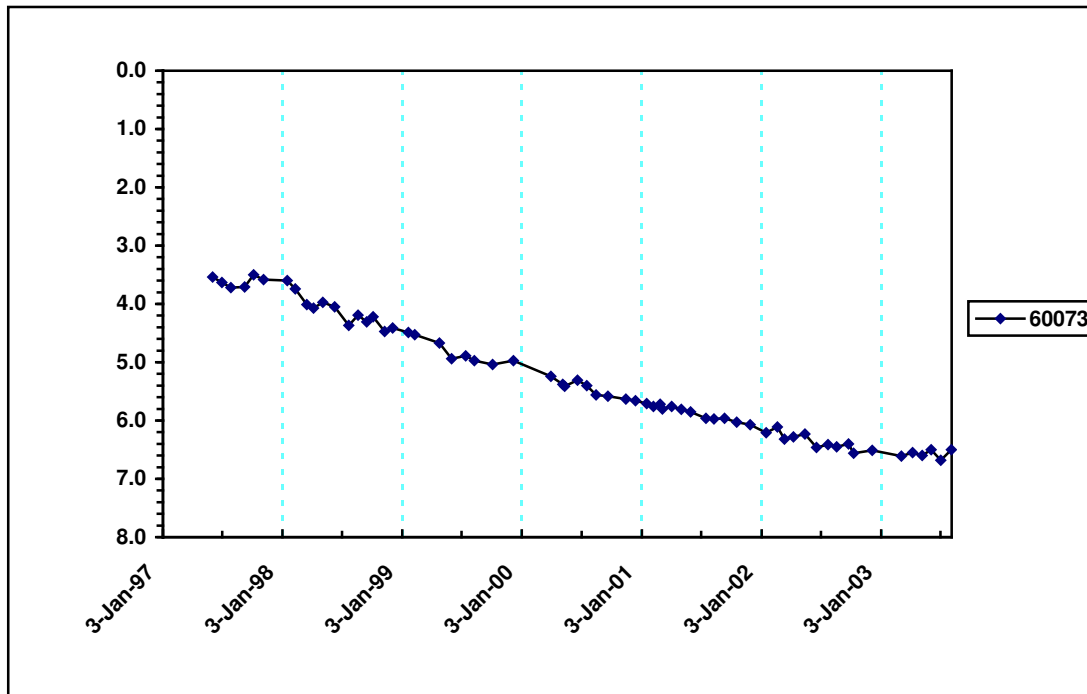
Lake Buloke

Bore number 6161



LPR No:	6161	Bore Monitor	Damon Stemmer (CLPR)
Locality Description:	Lake Buloke		
LMU:	Lake Floodplain	Landscape Position:	Lower catchment
Geological Description:	Calivil Renmark Group Regional groundwater system		
Land Cover:	Dryland cropping and some sheep grazing		
Bore Depth:	6.0m	Average Rainfall:	300 mm/yr
Av. Water Depth 2002-2003:	-5.0 m	Salinity(EC):	5150 μ S/cm
Groundwater Trend:	Strong falling groundwater trend observed here. Strong response to seasonal rainfall events. Groundwater has been continuing to drop since Lake Buloke dried up in early 1998.		

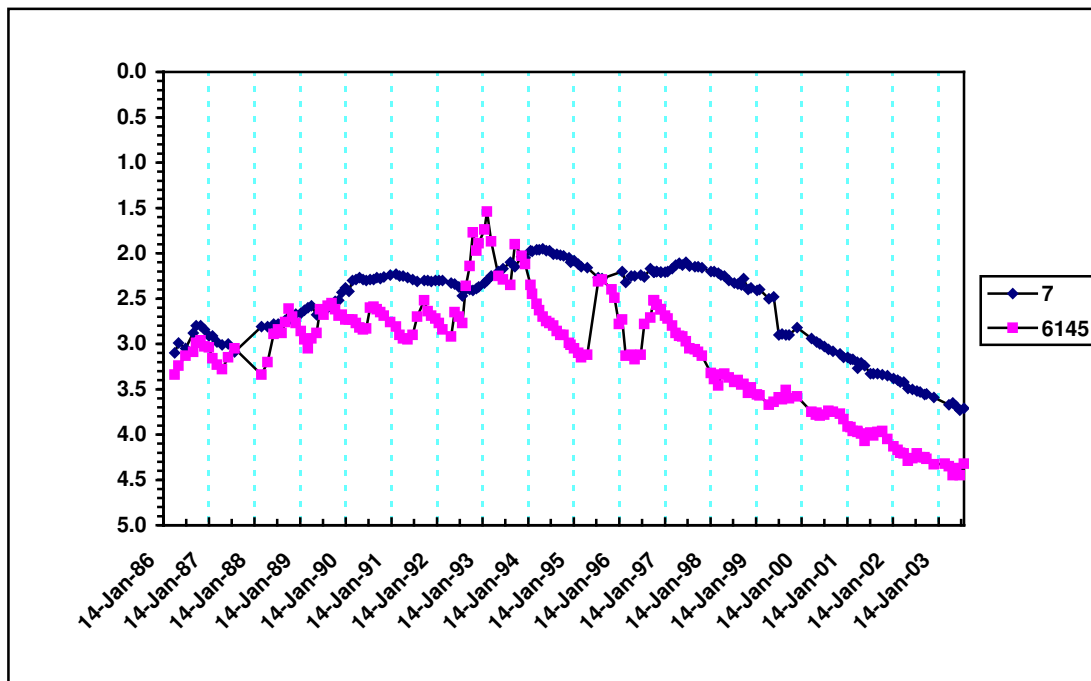
Lake Buloke
Bore number 60073



PR No:	60073	Bore Monitor	Damon Stemmer (CLPR)
Locality Description:	Lake Buloke		
LMU:	Lake Floodplain	Landscape Position:	Lower Catchment
Geological Description:	Calivil Renmark Group Regional groundwater system		
Land Cover:	Dryland cropping and some sheep grazing		
Bore Depth:	10m	Average Rainfall:	300 mm/yr
Av. Water Depth 2002-2003:	-6.3 m	Salinity(EC):	22970 μ S/cm
Groundwater Trend:	Steady falling groundwater trend observed here. Not as responsive to seasonal rainfall events. Groundwater has been continuing to drop since Lake Buloke dried up in early 1998.		

Reseigh's Red Gums

Bore numbers 7 and 6145

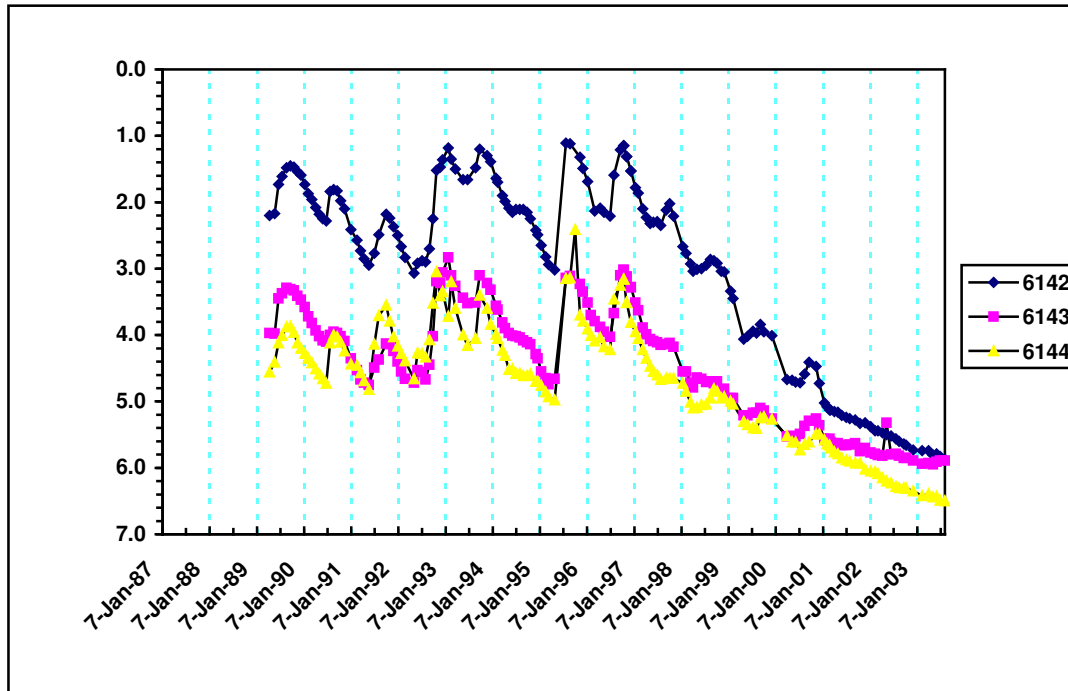


PR No:	7 and 6145	Bore Monitor	Damon Stemmer (CLPR)
Locality Description:	7 Roadside 6145 Roadside		
LMU:	Flat Clay Plains	Landscape Position:	Lower Catchment
Geological Description:	Calivil Renmark Regional groundwater system		
Land Cover:	Dryland cropping and some sheep grazing		
Bore Depth:	7 = 8.5m 6145 = 26m	Average Rainfall:	300 mm/yr
Av. Water Depth 2002-2003:	7 = -3.5m 6145 = -4.3m	Salinity(EC):	7=36700 6145=37200
Groundwater Trend:	Strong falling groundwater trends observed here. Bores very responsive to seasonal rainfall events because of their shallow depth.		

Centre for Land Protection Research

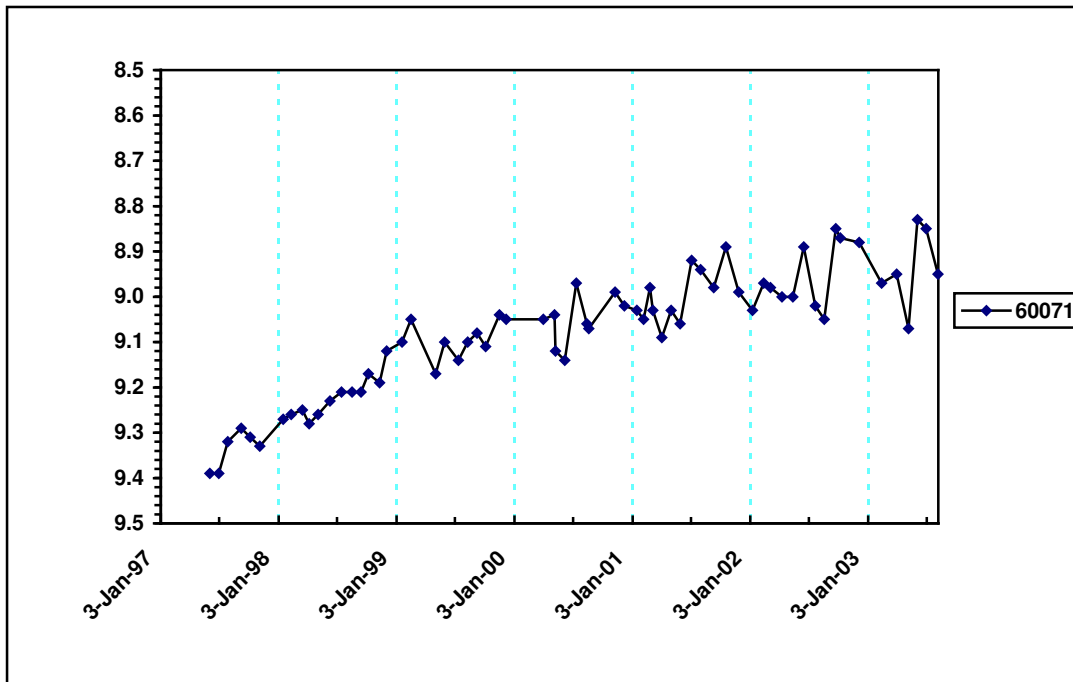
Lake Cope Cope

Bore numbers 6142 6143 and 6144



PR No:	6142, 6143, 6144	Bore Monitor	Damon Stemmer (CLPR)
Locality Description:	6142 and 6143 Lake Reserve western side of lake 6144 roadside further west outside of lake margins		
LMU:	Lunettes and Wimmera Sedimentary Rises	Landscape Position:	Lower Catchment
Geological Description:	Regional Fractured Rock groundwater system		
Land Cover:	Dryland cropping and some sheep grazing		
Bore Depth:	6142 & 6143 = 19.7m 6144 = 12m	Average Rainfall:	300 mm/yr
Av. Water Depth 2002-2003:	6142 = -5.0m 6143 = -5.5m 6144 = -6.0m	Salinity(EC):	6142=9240 6143=19980 6144=25900
Groundwater Trend:	Strong falling groundwater trends observed here. All bores very responsive to seasonal rainfall events because of their shallow depth.		

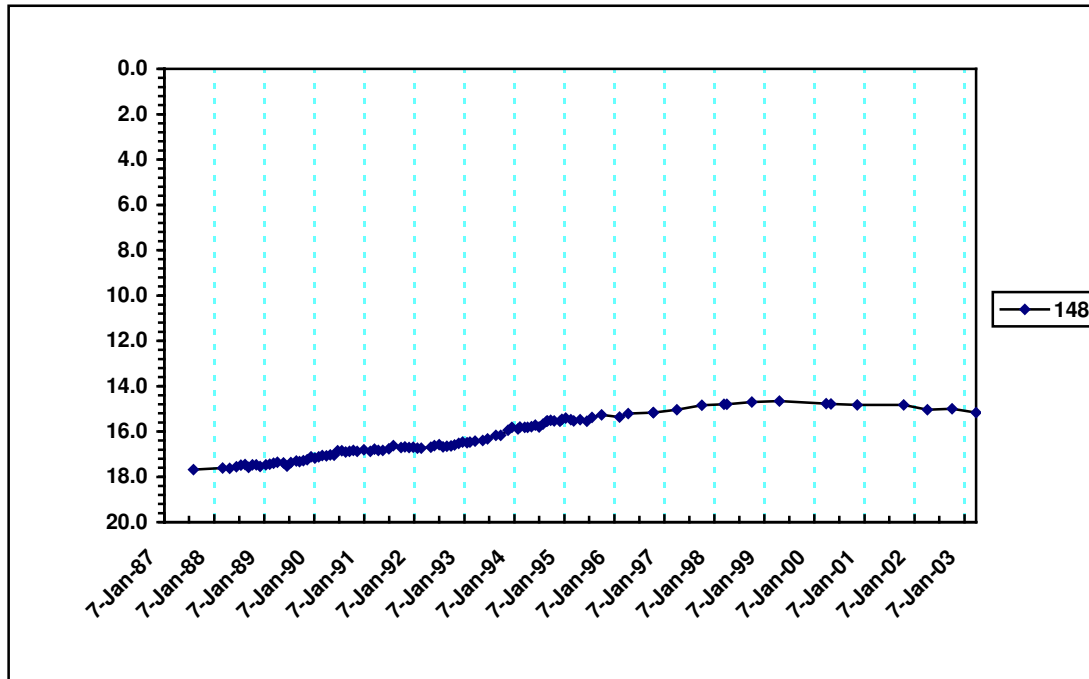
Bryce's Buloke
Bore number 60071



PR No:	60071	Bore Monitor	Damon Stemmer (CLPR)
Locality Description:	Bryce's Buloke		
LMU:	Flat Clay Plains	Landscape Position:	Mid Catchment
Geological Description:	Calivil Renmark Group Regional groundwater system		
Land Cover:	Dryland cropping and some sheep grazing		
Bore Depth:	14m	Average Rainfall:	300 mm/yr
Av. Water Depth 2002-2003:	-9.0 m	Salinity(EC):	22970 μ S/cm
Groundwater Trend:	Steady upward groundwater trend observed here. Responsive to seasonal rainfall events. Groundwater has been continuing to rise slowly despite dry seasonal conditions.		

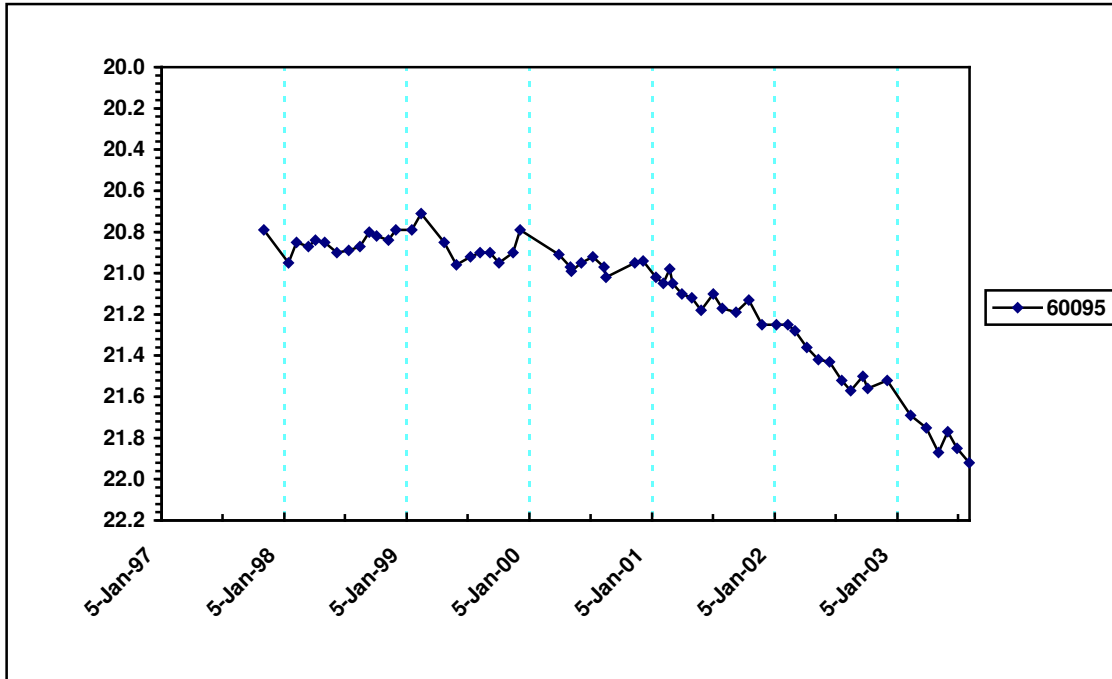
Box Swamp

Bore number 148



PR No:	148	Bore Monitor	Damon Stemmer (CLPR)
Locality Description:	Box Swamp 500m north of Avon River		
LMU:	Flat Clay Plains	Landscape Position:	Mid Catchment
Geological Description:	Calivil Renmark Group Regional groundwater system		
Land Cover:	Dryland cropping and some sheep grazing		
Bore Depth:	70m	Average Rainfall:	300 mm/yr
Av. Water Depth 2002-2003:	-16.0 m	Salinity(EC):	3660
Groundwater Trend:	Slight upward groundwater trend observed here. Unresponsive to seasonal rainfall events due to depth. Groundwater has been continuing to rise slowly despite dry seasonal conditions.		

Box Swamp
Bore number 60095



PR No:	60095	Bore Monitor	Damon Stemmer (CLPR)
Locality Description:	Box Swamp 500m north of Avon River		
LMU:	Flat Clay Plains	Landscape Position:	Mid Catchment
Geological Description:	Calivil Renmark Group Regional groundwater system		
Land Cover:	Dryland cropping and some sheep grazing		
Bore Depth:	30m	Average Rainfall:	300 mm/yr
Av. Water Depth 2002-2003:	-21.5 m	Salinity(EC):	14990
Groundwater Trend:	Steady falling groundwater trend observed here. Slightly responsive to seasonal rainfall events.		