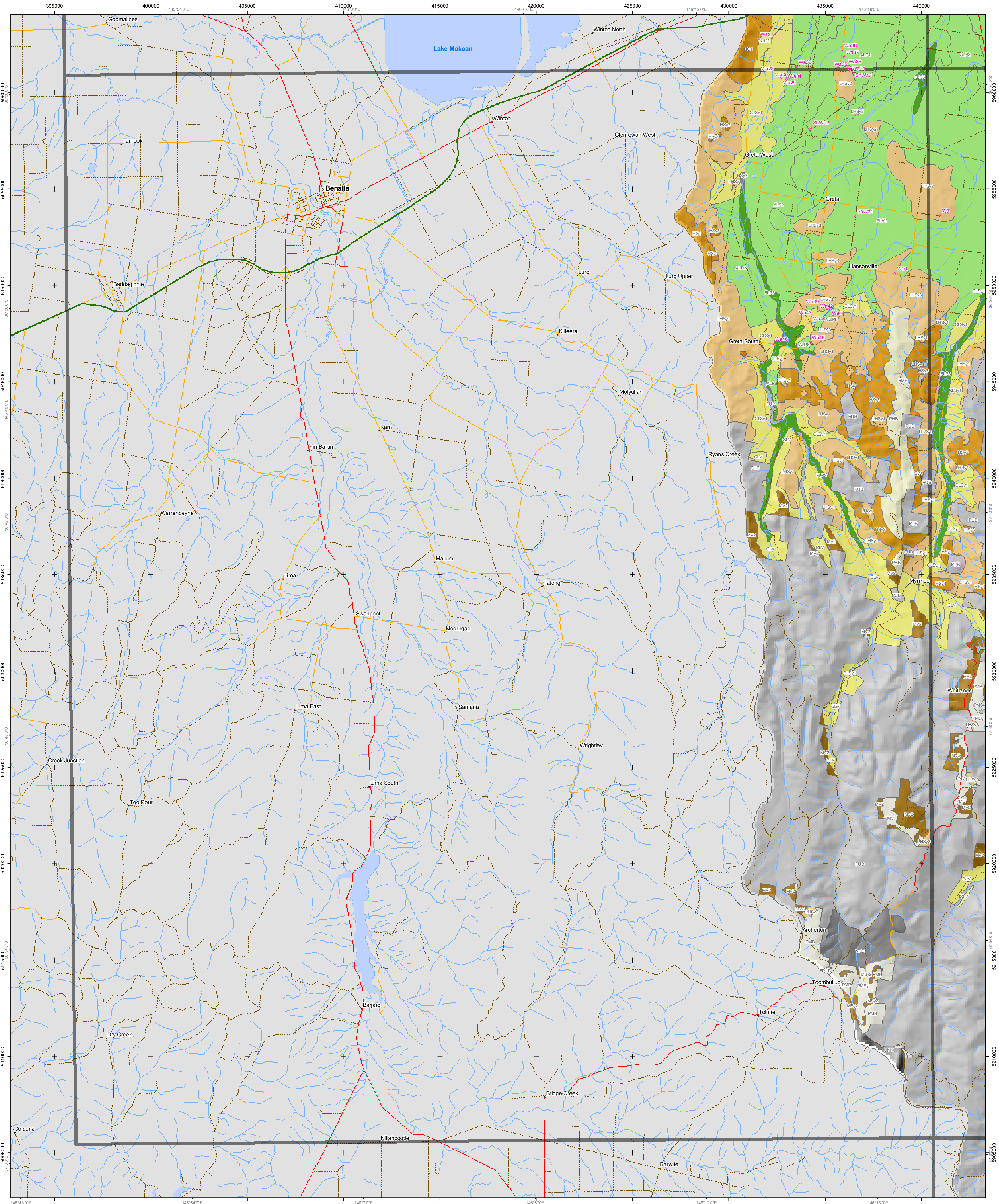


Soil-Landform Units of the North East CMA



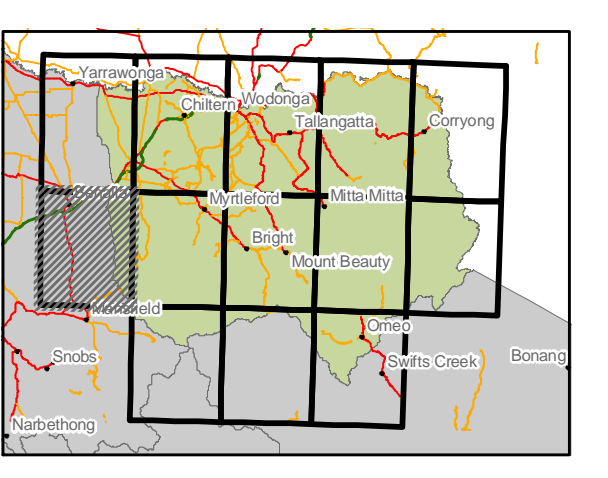
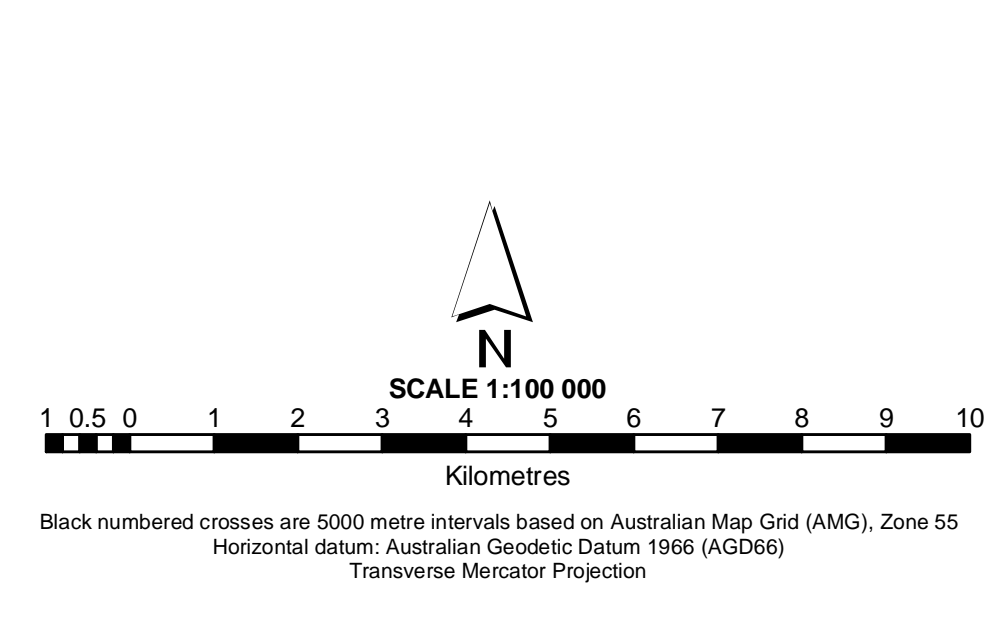
Additional Information
 Base data sourced from the NRE Corporate Geospatial Data Library (1:100 000 roads, rivers and localities).
 Land Capability classes for agriculture have been derived from a combination of soil, landform and climate attributes. Consideration must also be given to remnant vegetation (highlighted here as an overlay) and flood prone areas before planning decisions are made in regard to land use and land management.
 This map has been produced as part of the published report 'A Land Resource Assessment of Freehold Land within the North East CMA'. This map may be of assistance to you but the State of Victoria and its employees do not guarantee that the map is without flaw of any kind or is wholly appropriate for your particular purposes and therefore disclaims all liability for any error, loss or other consequence which may arise from you relying on any information in this map.
 Map produced: June 2002
 Project file: wlp_nre_nla11.mxd
 © The State of Victoria, Department of Natural Resources & Environment, 2002

Centre for Land Protection Research, Bendigo
 Cnr Midland Hwy & Taylor St
 Epsom, Victoria 3581
 (PO Box 3100 Bendigo Delivery Centre 3554)
 Ph: (03) 54 304444
 Fax: (03) 54 304304
 e-mail: cpl@nre.vic.gov.au



- ★ Soil sites
- Freeway
- Highway
- Main road
- Minor road
- Other road
- Main river
- Other river
- Stream
- Water bodies
- Public land
- Softwood plantations on private land

Flood Plain Alluvial	Colluvial	Low Hills	Hills	Mountains	Hill Plateaux
FLP1	CLG1	LHG1	HB	MG	PHB
FLP2	CLG2	LHG2	HG1	MGn	PHGn
FLP3	CLGn	LHGSy1	HG2	MSs1	PHSy
ALP1	CLGs	LHGSy2	HG3	MSs2	Mountain Plateaux
ALP2	CLSy1	LHGSy3	HG4	MSy1	PMB
ALP3	CLSy2	LHGSy4	HGn	MSy2	PMSs
ALP4	CLSy3		HSs1	MV1	PMSy
ALP5	CLSy4		HSs2	MV2	PMV
ALP6	CLSy5		HSs3		
	CLV		HSy1		
			HSy2		
			HSy3		



The Place To Be