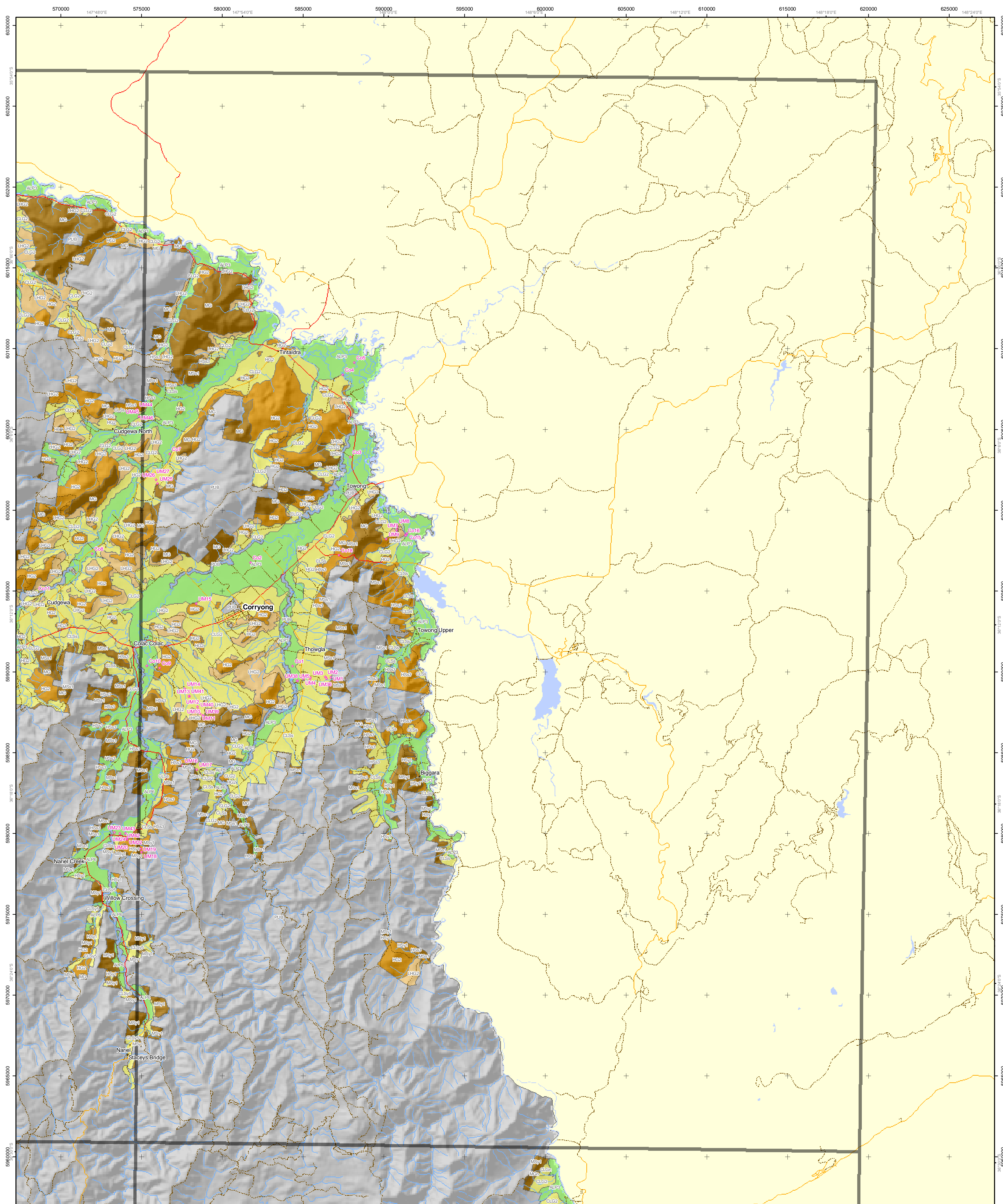


Soil-Landform Units of the North East CMA



Additional Information
 Base data sourced from the NRE Corporate Geospatial Data Library (1:100 000 roads, rivers and localities).
 Land Capability classes for agriculture have been derived from a combination of soil, landform and climate attributes. Consideration must also be given to remnant vegetation (highlighted here as an overlay) and flood prone areas before planning decisions are made in regard to land use and land management.
 This map has been produced as part of the published report 'A Land Resource Assessment of Freehold Land within the North East CMA'. This map may be of assistance to you but the State of Victoria and its employees do not guarantee that the map is without flaw of any kind or is wholly appropriate for your particular purposes and therefore disclaims all liability for any error, loss or other consequence which may arise from you relying on any information in this map.
 Map produced: June 2002
 Project file: wlp_nre_nla11.mxd
 © The State of Victoria, Department of Natural Resources & Environment, 2002

Centre for Land Protection Research, Bendigo
 Cnr Midland Hwy & Taylor St
 Epsom, Victoria 3581
 (PO Box 3100 Bendigo Delivery Centre 3554)
 Ph: (03) 54 304444
 Fax: (03) 54 304304
 e-mail: cplr@nre.vic.gov.au



- ★ Soil sites
- Freeway
- Highway
- Main road
- Minor road
- Other road
- Main river
- Other river
- Stream
- Water bodies
- Public land
- Softwood plantations on private land

Flood Plain Alluvial	Colluvial	Low Hills	Hills	Mountains Hill Plateaux
FLP1	ALF1	CLG1	LHG1	HB
FLP2	ALF2	CLG2	LHG2	HG1
FLP3	ALP1	CLGn	LHsY1	HG2
	ALP2	CLsS	LHsY2	HG3
	ALP3	CLSy1	LHsY3	HG4
	ALP4	CLSy2	LHsY4	HGn
	ALP5	CLSy3		MSs1
	ALP6	CLSy4		MSs2
	CLV			MSy1
				MSy2
				MSy3
				MSy4
				MSy5
				MSy6
				MSy7
				MSy8
				MSy9
				MSy10
				MSy11
				MSy12
				MSy13
				MSy14
				MSy15
				MSy16
				MSy17
				MSy18
				MSy19
				MSy20
				MSy21
				MSy22
				MSy23
				MSy24
				MSy25
				MSy26
				MSy27
				MSy28
				MSy29
				MSy30
				MSy31
				MSy32
				MSy33
				MSy34
				MSy35
				MSy36
				MSy37
				MSy38
				MSy39
				MSy40
				MSy41
				MSy42
				MSy43
				MSy44
				MSy45
				MSy46
				MSy47
				MSy48
				MSy49
				MSy50
				MSy51
				MSy52
				MSy53
				MSy54
				MSy55
				MSy56
				MSy57
				MSy58
				MSy59
				MSy60
				MSy61
				MSy62
				MSy63
				MSy64
				MSy65
				MSy66
				MSy67
				MSy68
				MSy69
				MSy70
				MSy71
				MSy72
				MSy73
				MSy74
				MSy75
				MSy76
				MSy77
				MSy78
				MSy79
				MSy80
				MSy81
				MSy82
				MSy83
				MSy84
				MSy85
				MSy86
				MSy87
				MSy88
				MSy89
				MSy90
				MSy91
				MSy92
				MSy93
				MSy94
				MSy95
				MSy96
				MSy97
				MSy98
				MSy99
				MSy100

SCALE 1:100 000
 1 0.5 0 1 2 3 4 5 6 7 8 9 10
 Kilometres
 Black numbered crosses are 5000 metre intervals based on Australian Map Grid (AMG), Zone 55
 Horizontal datum: Australian Geodetic Datum 1966 (AGD66)
 Transverse Mercator Projection

