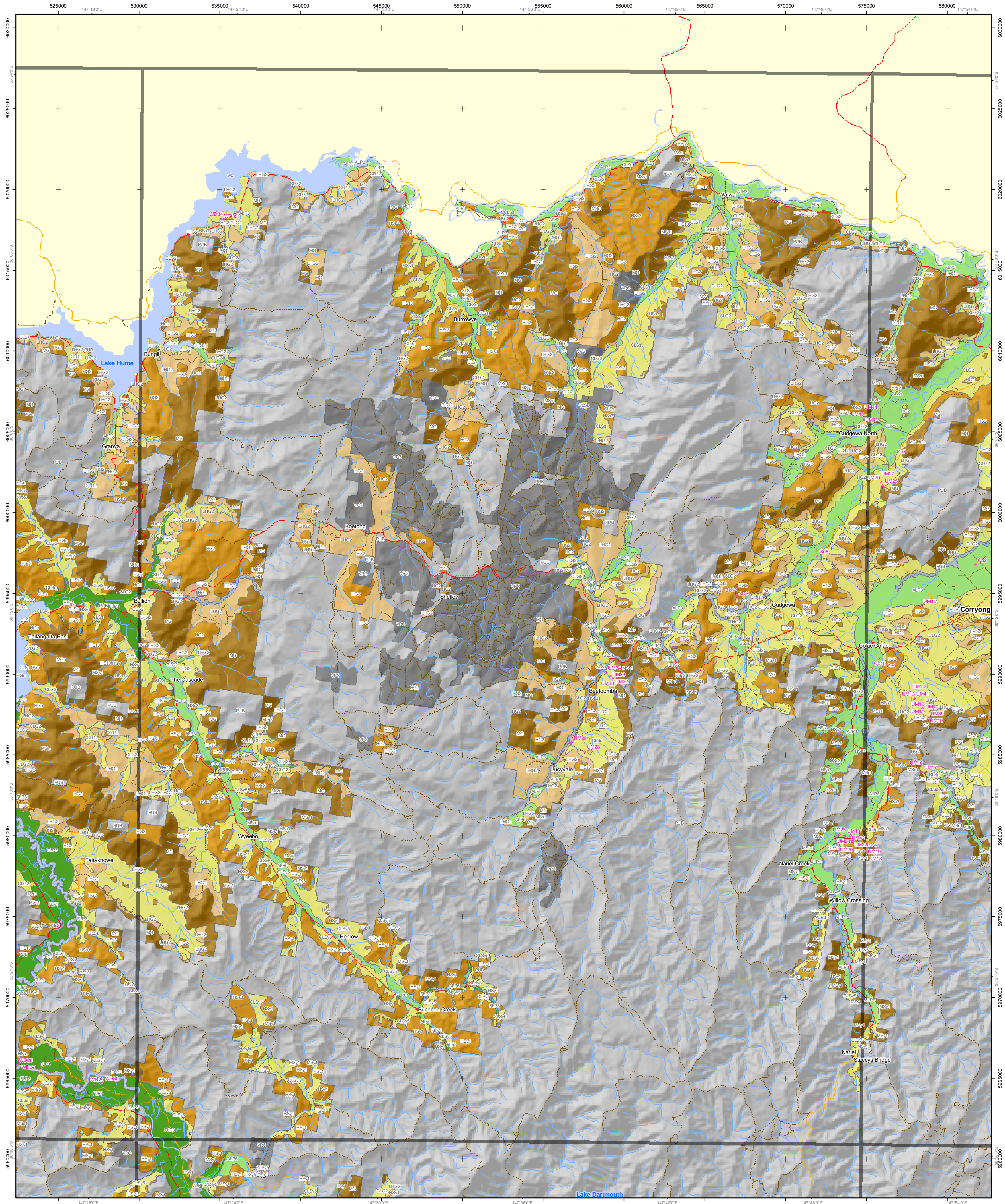
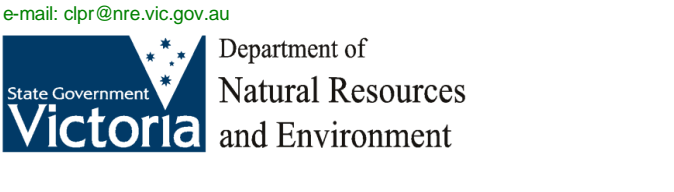


# Soil-Landform Units of the North East CMA



**Additional Information**  
 Base data sourced from the NRE Corporate Geospatial Data Library (1:100 000 roads, rivers and localities).  
 Land Capability classes for agriculture have been derived from a combination of soil, landform and climate attributes. Consideration must also be given to remnant vegetation (highlighted here as an overlay) and flood prone areas before planning decisions are made in regard to land use and land management.  
 This map has been produced as part of the published report 'A Land Resource Assessment of Freehold Land within the North East CMA'. This map may be of assistance to you but the State of Victoria and its employees do not guarantee that the map is without flaw of any kind or is wholly appropriate for your particular purposes and therefore disclaims all liability for any error, loss or other consequence which may arise from you relying on any information in this map.  
 Map produced: June 2002  
 Project file: wlp\_nre\_nla1.tmx  
 © The State of Victoria, Department of Natural Resources & Environment, 2002  
**Centre for Land Protection Research, Bendigo**  
 Cnr Midland Hwy & Taylor St.  
 Epsom Victoria 3581  
 PO Box 3100 Bendigo Delivery Centre 3554  
 Ph: (03) 54 304444  
 Fax: (03) 54 304304  
 e-mail: cpl@nre.vic.gov.au



- ★ Soil sites
- Freeway
- Highway
- Main road
- Minor road
- Other road
- Main river
- Other river
- Stream
- Water bodies
- Public land
- Softwood plantations on private land

Flood Plain Alluvial	Colluvial	Low Hills	Hills	Mountains	Hill Plateaux
FLP1	ALF1	CLG1	LHG1	HB	MG
FLP2	ALF2	CLG2	LHG2	HG1	MGn
FLP3	ALP1	CLGn	LHSy1	HG2	MSs1
	ALP2	CLGs	LHSy2	HG3	MSs2
	ALP3	CLSy1	LHSy3	HG4	MSy1
	ALP4	CLSy2	LHSy4	HGn	MSy2
	ALP5	CLSy3		HSs1	MV1
	ALP6	CLSy4		HSs2	MV2
		CLV		HSs3	
				HSy1	
				HSy2	

**Mountain Plateaux**

PHB	PHGn	PHSy	PMB	PMSs	PMSy	PMV
-----	------	------	-----	------	------	-----

SCALE 1:100 000  
 1 0.5 0 1 2 3 4 5 6 7 8 9 10  
 Kilometres

Black numbered crosses are 5000 metre intervals based on Australian Map Grid (AMG), Zone 55  
 Horizontal datum: Australian Geoid Datum 1966 (AGD66)  
 Transverse Mercator Projection

