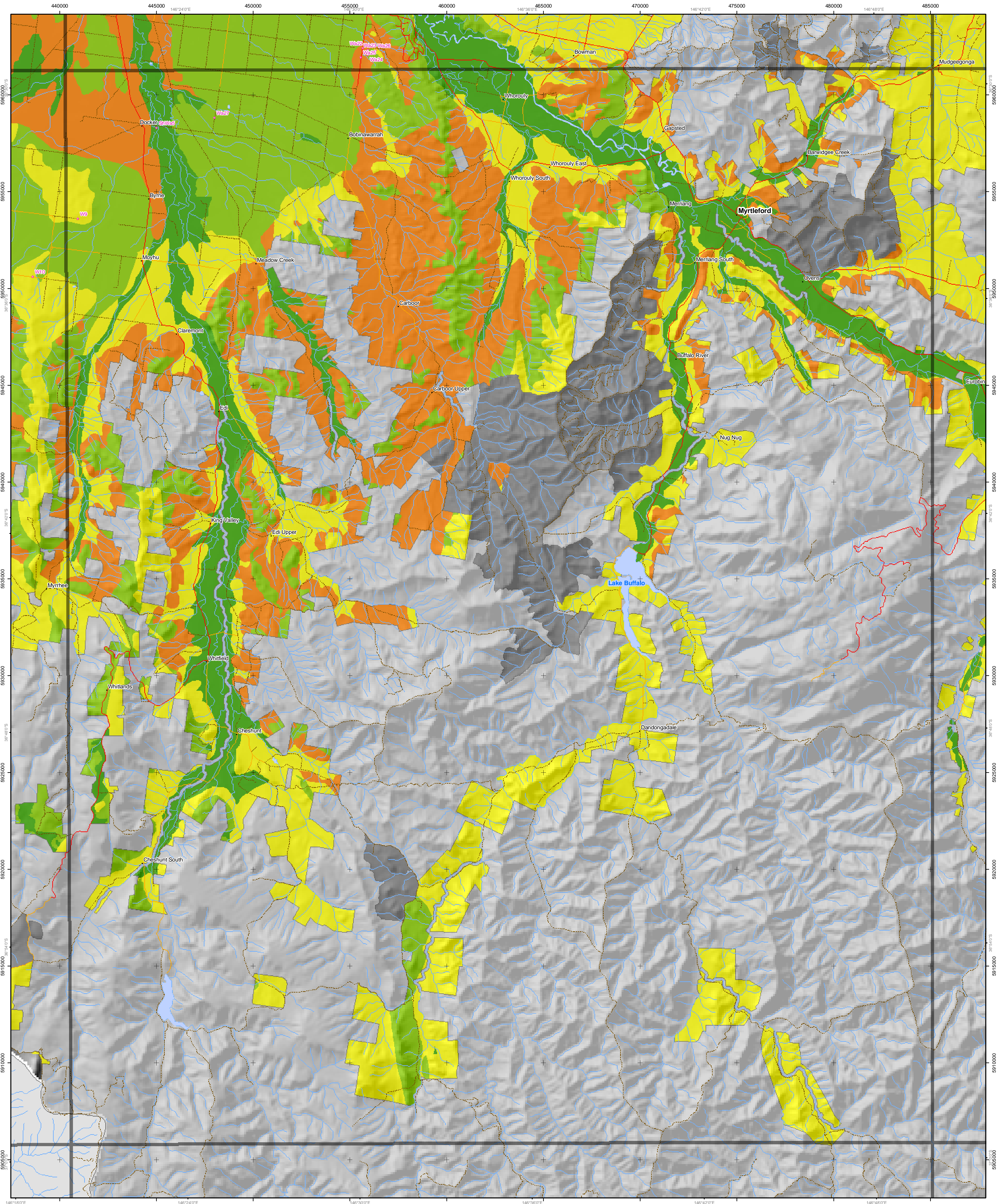


# Wind Erosion Susceptibility of the North East CMA



**Additional Information**  
 Base data sourced from the NRE Corporate Geospatial Data Library (1:100 000 roads, rivers and localities).  
 Land Capability classes for agriculture have been derived from a combination of soil, landform and climate attributes. Consideration must also be given to remnant vegetation (highlighted here as an overlay) and flood prone areas before planning decisions are made in regard to land use and land management.  
 This map has been produced as part of the published report 'A Land Resource Assessment of Freehold Land within the North East CMA'. This map may be of assistance to you but the State of Victoria and its employees do not guarantee that the map is without flaw of any kind or is wholly appropriate for your particular purposes and therefore disclaims all liability for any error, loss or other consequence which may arise from you relying on any information in this map.  
 Map produced: June 2002  
 Project file: w\_e\_nre\_n\_e\_11.mxd  
 © The State of Victoria, Department of Natural Resources & Environment, 2002  
**Centre for Land Protection Research, Bendigo**  
 Cnr Midland Hwy & Taylor St  
 Epsom Victoria 3581  
 (PO Box 3100 Bendigo Delivery Centre 3554)  
 Ph: (03) 54 304444  
 Fax: (03) 54 304304  
 e-mail: cpl@nre.vic.gov.au

- Soil sites
- Freeway
- Highway
- Main road
- Minor road
- Other road
- Main river
- Other river
- Stream
- Water bodies
- Public land
- Softwood plantations on private land

- Wind Erosion Susceptibility**
- Low
  - Low-Moderate
  - Moderate
  - Moderate-High
  - High

