

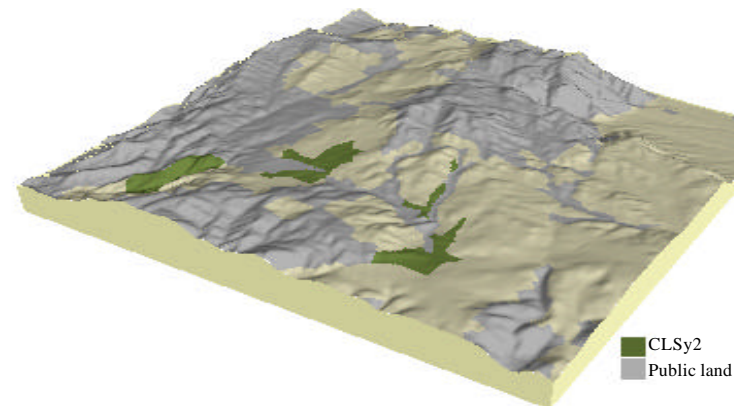
**Soil landform unit: CLSy2; Colluvium derived from Ordovician sediments, type 2**

Landform pattern      Rises  
 Elevation (m)        540-700  
 Annual rainfall (mm)   850-1100  
 Geomorphic unit      1.3.5 Eastern Uplands; Ridges, Valleys and Hills; Valleys, Terraces and Floodplains  
 Geology                Colluvium and alluvium derived from Ordovician sediments and minor Silurian granite and associated metamorphics

Locality diagram



Position in landscape



Landform component	1	2
Landform element	Mid slopes	Lower slopes and footslopes
Slope range (%)	10-20	1-10
Site drainage	Well drained	Well drained
Rock outcrop	Very slightly rocky	nil
Soil description	Red gradational and red texture contrast soils, generally friable, occasionally stony on steeper slopes	Red gradational and red texture contrast soils, generally friable, occasionally stony on steeper slopes
Present land use	Grazing, conservation, forestry	Grazing, conservation, forestry
Susceptibility to erosion	Sheet: High	Sheet: Moderate
	Gully: High	Gully: Moderate
	Landslip: High	Landslip: Low
	Wind: High	Wind: Moderate
Native vegetation	<i>Eucalyptus dives</i> , <i>E. goniocalyx</i> , <i>E. radiata</i> , <i>E. rubida</i>	<i>E. dives</i> , <i>E. goniocalyx</i> , <i>E. radiata</i> , <i>E. rubida</i>