

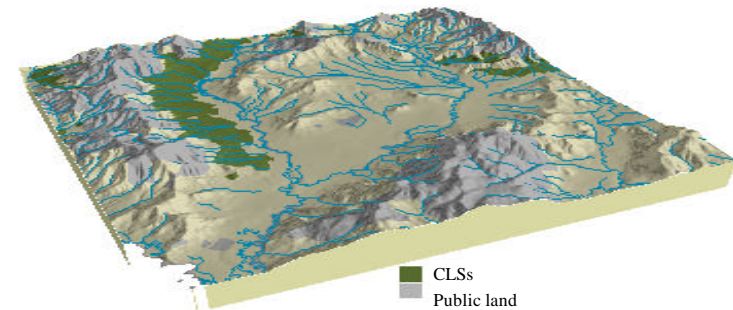
Soil landform unit: CLSs; Colluvium derived from schist

Landform pattern Low hills, rises and plains
 Elevation (m) 200-700
 Annual rainfall (mm) 650-1350
 Geomorphic unit 1.3.5 Eastern Uplands; Ridges Valleys and Hills; Valleys, Terraces and Floodplains
 Geology Colluvium and alluvium derived from Ordovician metasediments

Locality diagram



Position in landscape



Landform component	1	2
Landform element	Upper slopes	Lower slopes
Slope range (%)	10-20	1-10
Site drainage	Well drained	Imperfectly drained
Rock outcrop	Nil	Nil
Soil description	Red gradational and loam soils; red texture contrast soils	Grey/yellow and brown texture contrast and gradational soils
Present land use	Grazing,	Grazing , Dairying, occasional cropping
Susceptibility to erosion	Sheet and rill: High	Sheet and rill: Moderate
	Gully: Moderate	Gully: High
	Landslip: Moderate	Landslip: Low
	Wind: High	Wind: Moderate
Native vegetation	<i>Eucalyptus macrorhyncha</i> , <i>E. polyanthemos</i> , <i>E.microcarpa</i> , <i>E.bridgesiana</i> , <i>E. radiata</i> , <i>E. rubida</i> , <i>E. dives</i>	<i>E. macrorhyncha</i> , <i>E. polyanthemos</i> , <i>E.microcarpa</i> , <i>E.bridgesiana</i> , <i>E. radiata</i> , <i>E. rubida</i> , <i>E. dives</i>