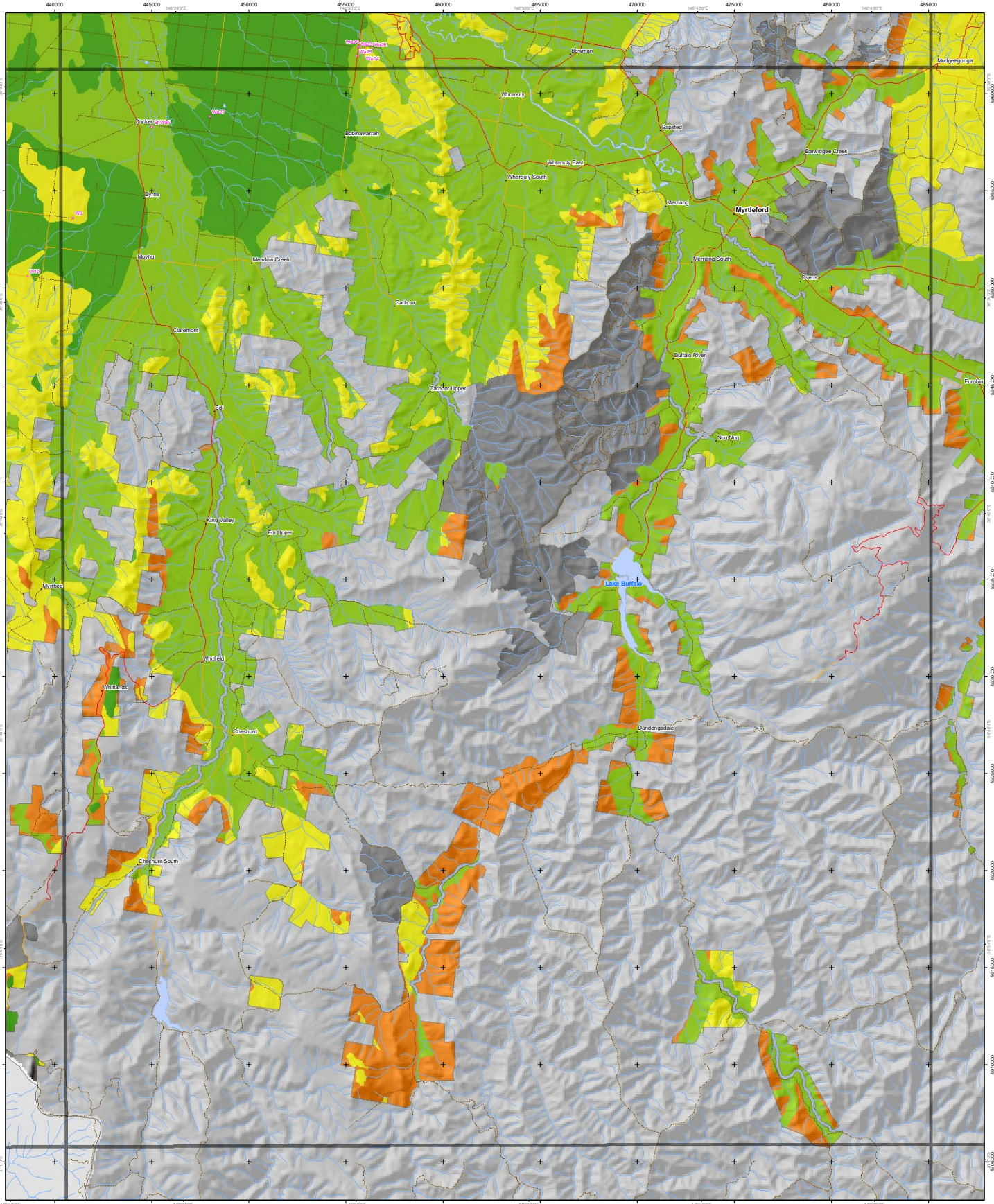


Mass Movement Susceptibility of the North East CMA



Additional Information
 Base data sourced from the NRE Corporate Geospatial Data Library (1:100,000 scale, vector and raster).
 Land Capability classes for agriculture have been derived from a combination of soil conditions and climate attributes. Consideration must also be given to relevant vegetation (highlighted here as an overlay) and flood prone areas before planning decisions are made in regard to land use and land management.
 This map has been produced as part of the published report 'A Land Resource Assessment of Freshford Land within the North East CMA'. This map may be of assistance to you, but the State of Victoria and its employees do not guarantee that this map is without flaw of any kind or is wholly appropriate for your particular purposes and therefore disclaims all liability for any error, loss or other consequence which may arise from relying on any information in this map.
 Map produced: June 2002
 Project file no: 14161_211.pxd
 © The State of Victoria, Department of Natural Resources & Environment, 2002

Centre for Land Protection Research, Bendigo
 100 Moorabool St, Bendigo
 Eastern Victoria 3551
 PO Box 3108 Bendigo Delivery Centre 3554
 Ph: (053) 94 20444
 Fax: (053) 94 20454
 e-mail: clpr@dnre.vic.gov.au

- Soil sites
- Freeway
- Highway
- Main road
- Minor road
- Other road
- Main river
- Other river
- Stream
- Water bodies
- Public land
- Softwood plantations on private land

- Mass Movement Susceptibility**
- Low
 - Low-Moderate
 - Moderate
 - Moderate-High
 - High

