

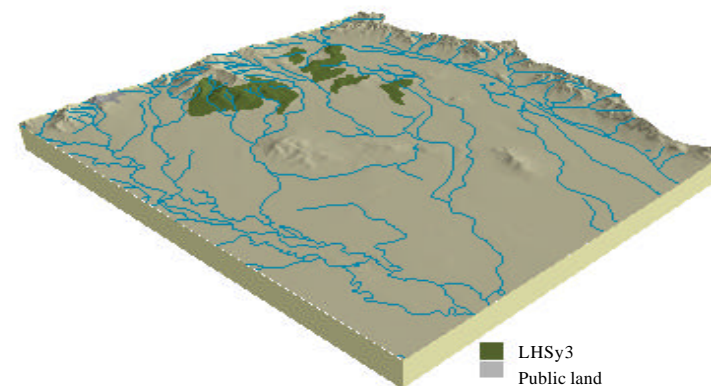
Soil landform unit: LHSy3; Low hills on Carboniferous sediments, type 3

Landform pattern	Low hills with broad crests and moderate to very gentle slopes
Elevation (m)	200-300
Annual rainfall (mm)	650-700
Geomorphic unit	1.3.3 Eastern Uplands; Ridges, Valleys and Hills; Outlying Low Hills
Geology	Lower Carboniferous conglomerate, sandstone siltstone and shale

Locality diagram



Position in landscape



Landform component	1	2	3
Landform element	Broad hill crests	Gentle to moderate hill slopes	Valley flat or drainage depression
Slope range (%)	1-4	4-20	1-4
Site drainage	Moderately well drained	Imperfectly drained	Poor to very poorly drained
Rock outcrop	Nil	Nil	Nil
Soil description	Red texture contrast soils	Red texture contrast soils, yellow texture contrast soils with bleached A2 horizons and mottled subsoils	Yellow texture contrast soils
Present land use	Grazing	Grazing	Grazing
Susceptibility to erosion	Sheet: Low	Sheet: High	Sheet: Moderate
	Gully: Moderate	Gully: Moderate	Gully: Moderate
	Landslip: Low	Landslip: Moderate	Landslip: Very low
	Wind: High	Wind: Moderate	Wind: Very low
Native vegetation	<i>Eucalyptus polyanthemos</i> , <i>E. microcarpa</i> ,	<i>E. polyanthemos</i> , <i>E. microcarpa</i> , <i>E. albens</i> , <i>E. melliodora</i> , <i>E. blakelyi</i> , <i>E. Bridgesiana</i>	<i>E. melliodora</i> , <i>E. blakelyi</i> , <i>E. bridgesiana</i>