

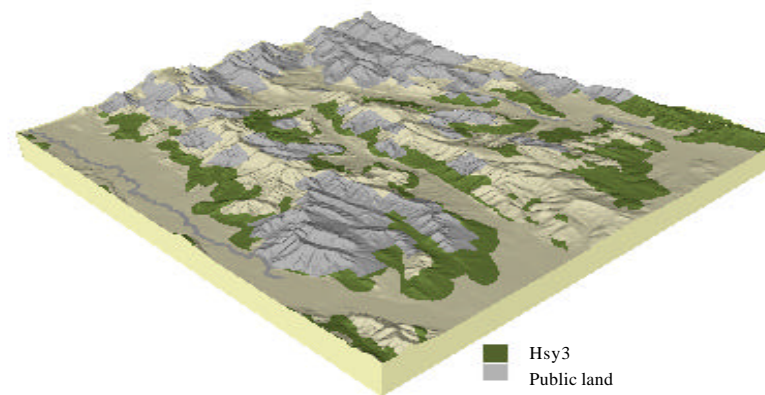
Soil landform unit: LHSy1; Low hills on Ordovician sediments, type 1, Myrrhee / Carboor

Landform pattern Low hills with rocky crests and moderate to very gentle slopes
 Elevation (m) 180-350
 Annual rainfall (mm) 400-650
 Geomorphic unit 1.3.3 Eastern Uplands; Ridges, Valleys and Hills; Outlying Low Hills
 Geology Ordovician greywacke, sandstone, siltstone, shale, mudstone

Locality details



Position in landscape



Landform component	1	2	3
Landform element	Gentle crests	Moderate to gentle hill slopes	Valley flat or drainage depression
Slope range (%)	1-20	10-20	1-10
Site drainage	Rapidly drained	Well drained	Poor to very poorly drained
Rock outcrop	Rocky	Slightly rocky	Nil
Soil description	Shallow, stony texture contrast soils with weakly bleached A2 horizons or stony, red gradational soils	Red and brown texture contrast soils	Grey and yellow texture contrast or gradational soils
Present land use	Grazing	Grazing	Grazing, dryland cropping
Susceptibility to erosion	Sheet: Moderate	Sheet: Moderate	Sheet: Moderate
	Gully: Moderate	Gully: Moderate	Gully: Moderate
	Landslip: Very low	Landslip: Low	Landslip: Very low
	Wind: High	Wind: High	Wind: High
Native vegetation	<i>Eucalyptus macrorhyncha</i> , <i>E.dives</i> , <i>E. polyanthemos</i>	<i>E. macrorhyncha</i> , <i>E.dives</i> , <i>E. polyanthemos</i>	<i>E. macrorhyncha</i> , <i>E.dives</i> , <i>E. polyanthemos</i>