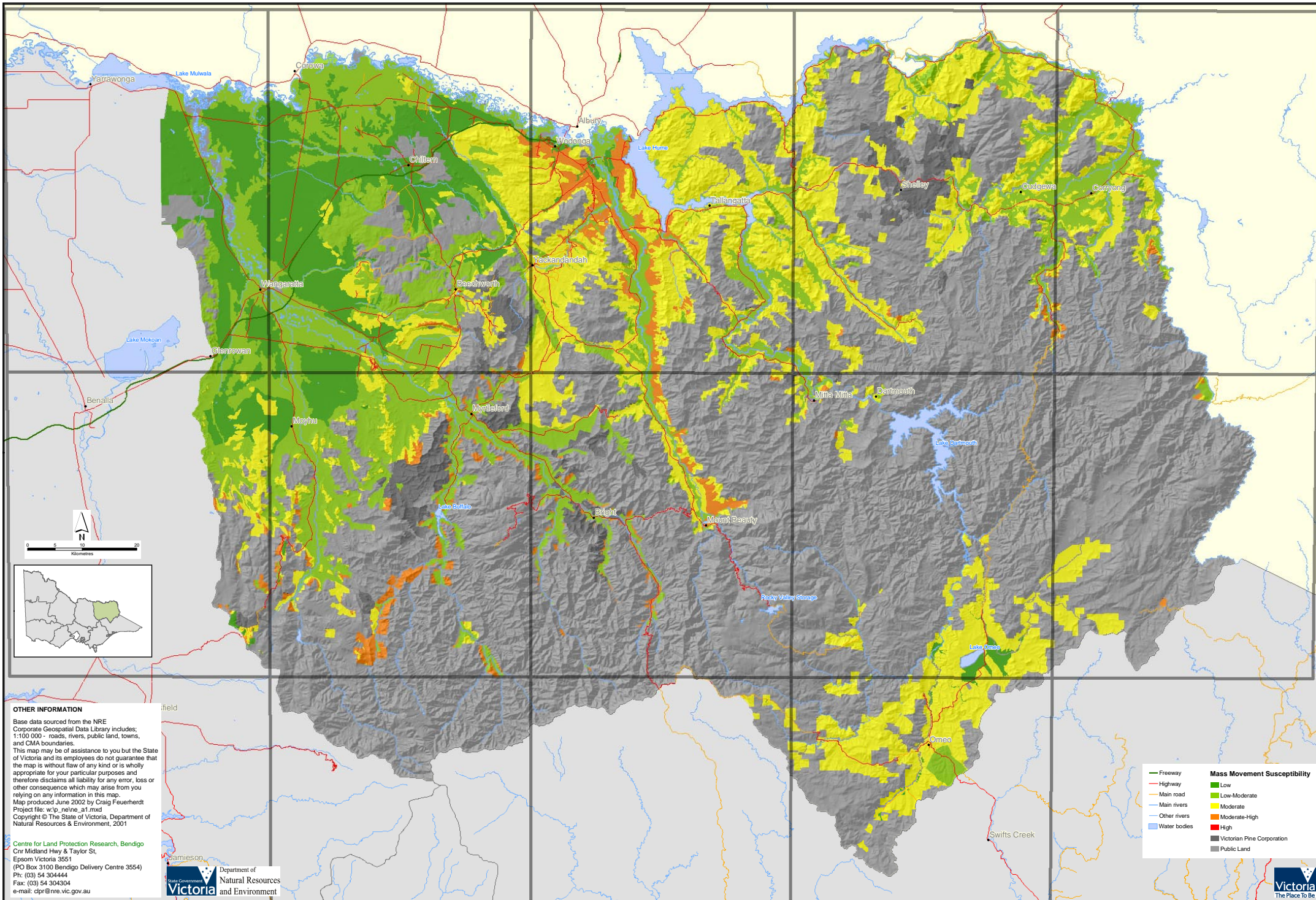


Mass Movement Susceptibility of the North East CMA



OTHER INFORMATION

Base data sourced from the NRE Corporate Geospatial Data Library includes; 1:100 000 - roads, rivers, public land, towns, and CMA boundaries.

This map may be of assistance to you but the State of Victoria and its employees do not guarantee that the map is without flaw of any kind or is wholly appropriate for your particular purposes and therefore disclaims all liability for any error, loss or other consequence which may arise from you relying on any information in this map.

Map produced June 2002 by Craig Feuerherdt
 Project file: w:\p_neline_at1.mxd
 Copyright © The State of Victoria, Department of Natural Resources & Environment, 2001

Centre for Land Protection Research, Bendigo
 601 Midland Hwy & Taylor St,
 Epsom Victoria 3551
 (PO Box 3100 Bendigo Delivery Centre 3554)
 Ph: (03) 54 304444
 Fax: (03) 54 304304
 e-mail: cpr@nre.vic.gov.au



- | | |
|------------------------------|-------------------------------------|
| — Freeway | Mass Movement Susceptibility |
| — Highway | Low |
| — Main road | Low-Moderate |
| — Main rivers | Moderate |
| — Other rivers | Moderate-High |
| — Water bodies | High |
| — Victorian Pine Corporation | |
| — Public Land | |

