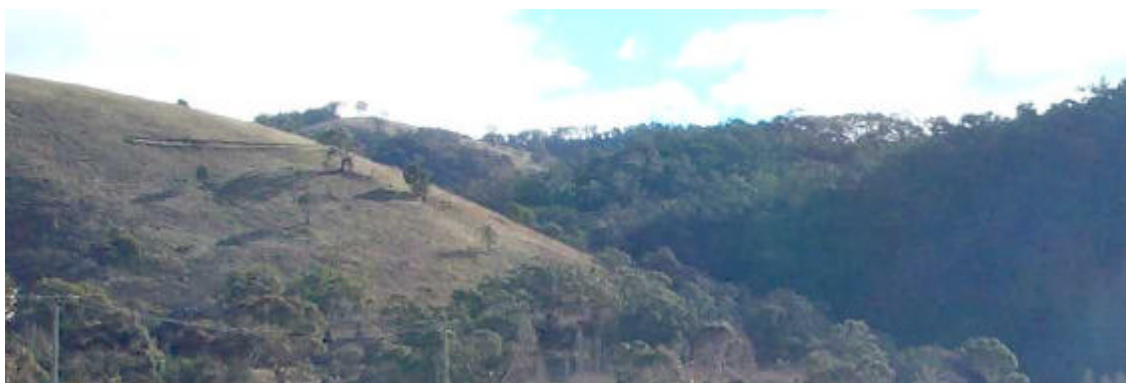


**Soil landform map unit:** PMSy; Plateaux associated with Carboniferous mountains <1220 m, Wabonga

**Component:** 3

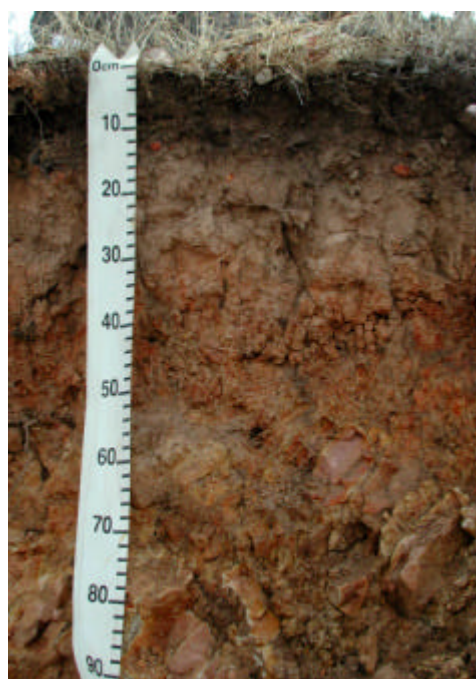
**Land element:** Steep hill slopes (scarp slope)



Soils	General description	ASC	PPF
Major	Brown texture contrast soils	Haplic, Dystrophic, Brown Kurosol; medium, slightly gravelly, silty, clayey, very deep	Db3.11
Minor	Brown gradational soils	Brown Dermosol	Gn4.14

**Physical characteristics:**

Horizon	Depth (cm)	Representative profile description Site ID: O&K 509
A1	0-10	Black (10YR2/2) silty loam; strong granular structure; loose consistence; slightly gravelly; pH 4.7; clear transition to:
A3	10-30	Dark brown (7.5YR3/2) silty loam; weak to moderate subangular blocky structure; weak consistence; slightly gravelly; pH 4.5; gradual transition to:
B1	30-60	Dark brown (7.5YR3/2) clay loam; weak to moderate subangular blocky structure; weak consistence; slightly gravelly; pH 4.5; gradual transition to:
B2	60-105	Dark brown (7.5YR3/4) light clay; weak to moderate subangular blocky structure; weak consistence; gravelly; pH 4.3; gradual transition to:
B3	105-185+	Dark reddish brown (5YR3/4) clay loam; weak subangular blocky structure; firm consistence; common stone and gravel; pH 4.3



**Chemical characteristics:**

Horizon	pH	Salinity (EC)	Internal drainage	Sodicity	Slaking	Dispersion
A1	Strongly acid	Very low	Rapidly drained	Non sodic	N/A	N/A
A3	Strongly acid	Very low	Well drained	Non sodic	N/A	N/A
B1	Strongly acid	Very low	Well drained	Non sodic	N/A	N/A
B2	Strongly acid	Very low	Well drained	Non sodic	N/A	N/A
B3	Strongly acid	Very low	Well drained	Non sodic	N/A	N/A