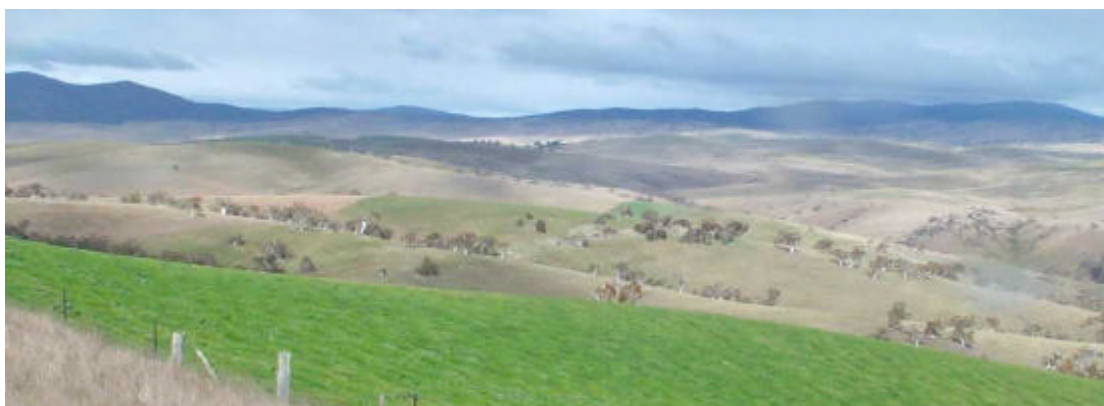


**Soil landform map unit:** PMSs; Plateaux on schist mountains,  
High Plains

**Component:** 1

**Land element:** Rolling hills and rises



Soils	General description	ASC	PPF
Major	Shallow organic loams, stony loams	Humose Mesotrophic Black Dermosol	Um7, Uc6.11, Gn2.41
Minor	Deep organic loams	Black and Brown Dermosols, Leptic Rudosols	Um7 11, Gn2.41

**Physical characteristics:**

Horizon	Depth (cm)	Representative profile description Site ID: Kiewa 231
A11	0-23	Very dark brown (10YR2/3) humose sandy loam; strong granular structure; loose slightly moist consistence when slightly moist; pH 4.8; clear transition to:
A12	23-38	Very dark brown (10YR 2/2) humose sandy loam; moderate subangular blocky structure; very weak slightly moist consistence; slightly gravelly; pH 4.8; gradual transition to:
A3/B	38-60	Very dark brown (10YR2/3) sandy loam; moderate subangular blocky structure; very weak moist consistence; gravelly; pH 5.0; gradual transition to:
C	60-75+	Dark yellowish brown (10YR4/4) sandy clay loam; massive; moderately gravelly; pH 5.2



**Chemical characteristics:**

Horizon	pH	Salinity (EC)	Internal drainage	Sodicity	Slaking	Dispersion
A11	Strongly acidic	Low	Very low	Very low	Non slaking	Very low
A12	Strongly acidic	Very low	Very low	Very low	Non slaking	Very low
A3/B	Strongly acidic	Very low	Very low	Low	Non slaking	Very low
C	Strongly acidic	Very low	Very low	Low	Slaking	Low