

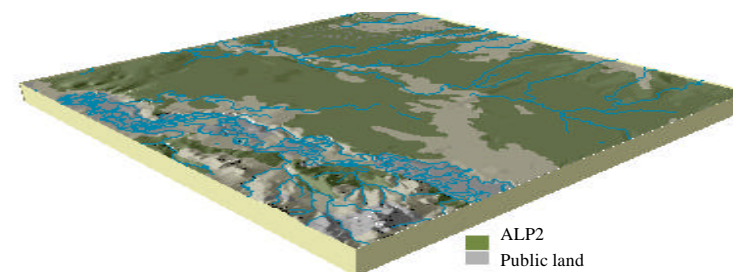
Soil landform unit: ALP2; Alluvial plain associated with the Ovens River

Landform pattern Alluvial plain
 Elevation (m) 120-160
 Annual rainfall (mm) 450-900
 Geomorphic unit 4.2.2 Riverine Plain; Older Alluvial Plain; Plains without Leveed Channels
 Geology Quaternary sediments

Locality diagram



Position in landscape



Landform component	1	2
Landform element	Plain	Drainage depression/swamp
Slope range (%)	<1	<1
Site drainage	Poorly drained	Very poorly drained
Rock outcrop	Nil	Nil
Soil description	Brown texture contrast soils, some with bleached A2 horizons	Black or grey cracking clay soils
Present land use	Grazing, cropping	Grazing
Susceptibility to erosion	Sheet: Very low	Sheet: Low
	Gully: Moderate	Gully: Moderate
	Landslip: Very low	Landslip: Very low
	Wind: Low	Wind: Very low
Native vegetation	<i>Eucalyptus camaldulensis</i> , <i>E. melliodora</i> <i>E. blakelyi</i> , <i>E. microcarpa</i>	<i>E. camaldulensis</i>