

Soil landform map unit: ALP1; Alluvial plain with prior stream channels, associated with the Ovens River **Component:** 1

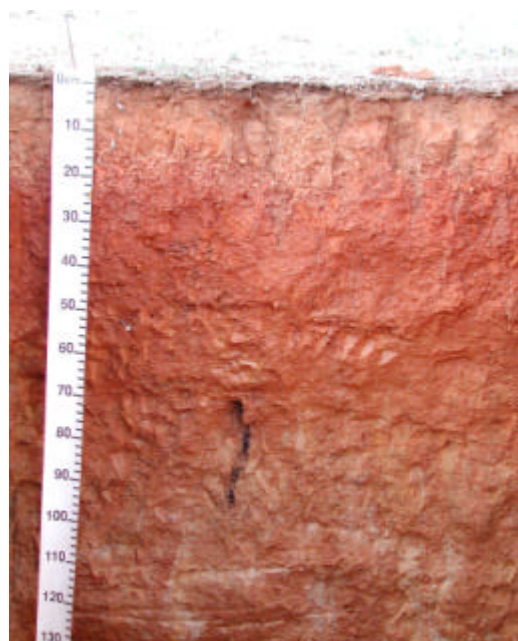
Land element: Prior stream levee



Soils	General description	ASC	PPF
Major	Red texture contrast soils	Red Chromosol	Dr3.22
Minor	Red texture contrast soils with bleached A2 horizons	Red Chromosol	Dr3.42

Physical characteristics:

Horizon	Depth (cm)	Representative profile description Site ID: NELRA 252
A1	0-2	Dark brown (7.5YR3/2) sandy loam; moderate subangular blocky structure; rough fabric; very weak consistence; pH 6.0; abrupt transition to:
A2	2-10	Reddish brown (5YR5/4) sandy clay loam; weak prismatic structure; rough fabric; very firm consistence; pH 6.0; clear transition to:
B21	10-50	Reddish brown (2.5YR4/4) medium heavy clay; strong prismatic structure; smooth fabric; firm consistence; pH 6.0; clear transition to:
B22	50-160+	Light yellowish brown (10YR6/4) light medium clay; strong angular blocky structure; rough fabric; weak consistence; mottled; pH 7.0



Chemical characteristics:

Horizon	pH	Salinity (EC)	Internal drainage	Sodicity	Slaking	Dispersion
A1	Moderately acid	Very low	Well drained	Sodic	Non slaking	Very low
A2	Moderately acid	Very low	Imperfectly drained	Non sodic	Non slaking	Low
B21	Moderately acid	Very low	Imperfectly drained	Sodic	Non slaking	Low
B22	Neutral	Very low	Poorly drained	Sodic	Slaking	High