

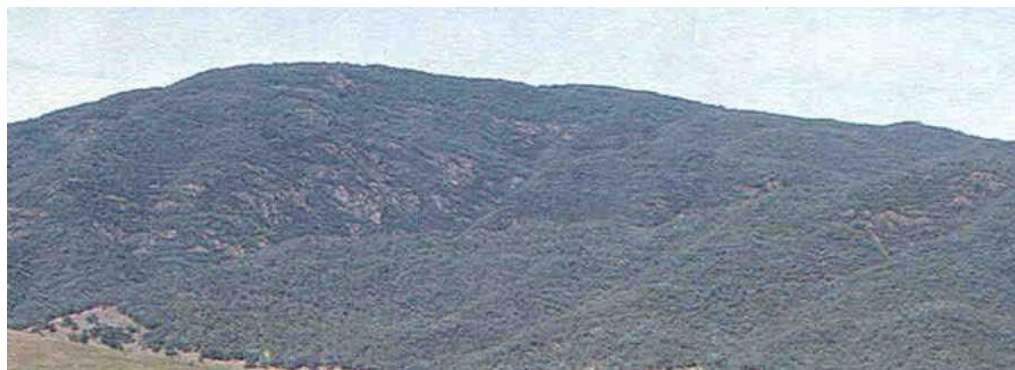
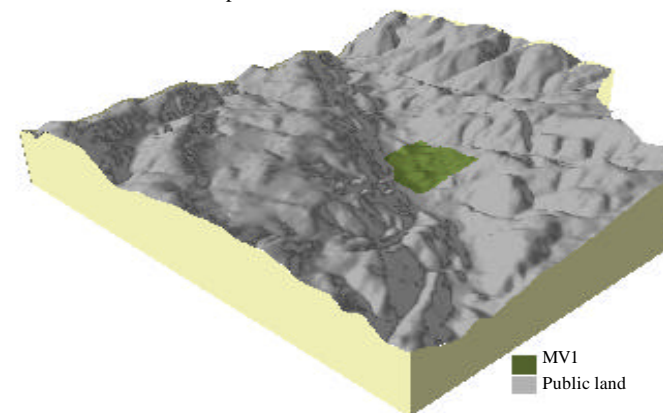
Soil landform unit: MV1; Mountains on rhyolite and rhyodacite, type 1, Upper Murray Valley

Landform pattern	Mountains
Elevation (m)	650-1300
Annual rainfall (mm)	800 - 1200
Geomorphic unit	1.2.1 Eastern Uplands; Intermediate Elevation Landscapes; Isolated Summits
Geology	Silurian and Devonian rhyolite and rhyodacite

Locality diagram



Position in landscape



Landform component		1
Landform element	Crests and side slopes	
Slope range (%)	3->32	
Site drainage	Poorly to well drained depending upon slope, with moderate permeability	
Rock outcrop	Up to 50%, rock to 4 m	
Soil description	Reddish yellow gradational soils	
Present land use	Uncleared	
Susceptibility to erosion	Sheet and rill: Moderate on slopes 10-20% and high on slopes >20%	
	Gully: Low	
	Landslip: High	
	Wind: Moderate	
Native vegetation	<i>Eucalyptus dives</i> , <i>E. dalrympleana</i> , <i>E. delegatensis</i>	