

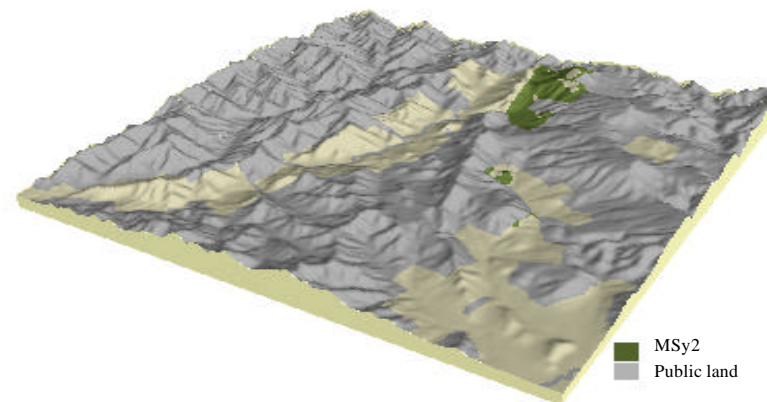
Soil landform unit: MSy2; Mountains on Carboniferous sediments, type 2, Koonika

Landform pattern Mountains with steep linear and concave slopes
 Elevation (m) 500-1000
 Annual rainfall (mm) 1200-1500
 Geomorphic unit 1.1.5 Eastern Uplands; High Elevation Landscapes; Broad Ridges
 Geology Lower Carboniferous conglomerate, sandstone, siltstone and shale

Locality diagram



Position in landscape



| Landform component | 1 | 2 |
|---------------------------|---|--|
| Landform element | Steep crest and upper slopes | Steep and moderate hill slopes |
| Slope range (%) | 15-45 | 15-35 |
| Site drainage | Rapidly drained | Rapidly drained |
| Rock outcrop | Very rocky | Rocky |
| Soil description | Stony loam soils or dry peats at high elevation | Brown friable gradational soils or stony loam soils |
| Present land use | Conservation, forestry | Conservation, forestry |
| Susceptibility to erosion | Sheet: Low | Sheet: High |
| | Gully: Very low | Gully: Moderate |
| | Landslip: Very low | Landslip: High |
| | Wind: Very low | Wind: Moderate |
| Native vegetation | Open heath to low shrubland or <i>Eucalyptus pauciflora</i> , <i>E. dalrympleana</i> above 1400 m | <i>E. macrorhyncha</i> , <i>E. dives</i> , <i>E. rubida</i> , <i>E. radiata</i> or <i>E. delegatensis</i> above 1100 m |