

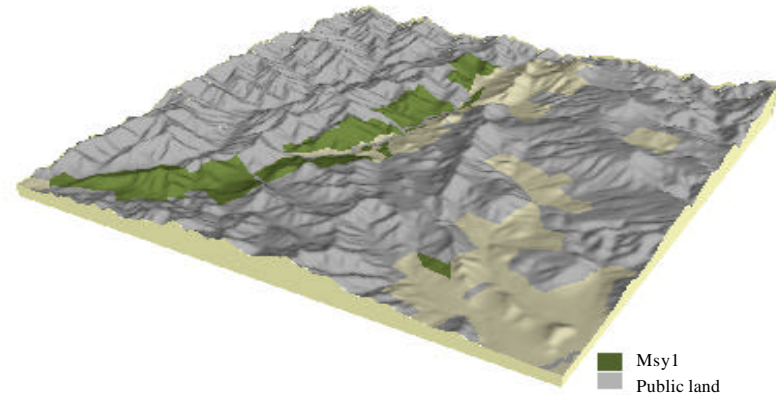
**Soil landform unit: MSy1; Mountains on sedimentary rock, type 1, Porepunkah / Buckland / Upper Murray**

Landform pattern Mountains  
 Elevation (m) 400-750  
 Annual Rainfall (mm) 900-1600  
 Geomorphic unit 1.3.1 Eastern Uplands; Ridges, Valleys and Hills; High Dissected Ridges and Valleys  
 Geology Ordovician sandstone, shale and siltstone

Locality diagram



Position in landscape



Landform component	1	2
Landform element	Crests and steep side slopes	Steep upper slopes and mid slopes
Slope range (%)	3->32	20->32
Site drainage	Poorly to well drained depending upon slope with moderate permeability	Well drained to rapidly drained
Rock outcrop	Up to 50%, rock to 4 m	20-50%, rock to 2 m
Soil description	Yellowish red gradational soils	Greyish brown to yellowish brown texture contrast soils
Present land use	Public land, minor grazing	Public land, minor grazing
Susceptibility to erosion	Sheet and rill: Moderate	Sheet and rill: Moderate
	Gully erosion: Moderate	Gully erosion: Low
	Landslip: High	Landslip: Moderate
	Wind: Moderate	Wind: Moderate
Native vegetation	<i>Eucalyptus dives</i> , <i>E. radiata</i> , <i>E. mannifera</i>	<i>E. dives</i> , <i>E. radiata</i> , <i>E. mannifera</i> , <i>E. macrorhyncha</i>