

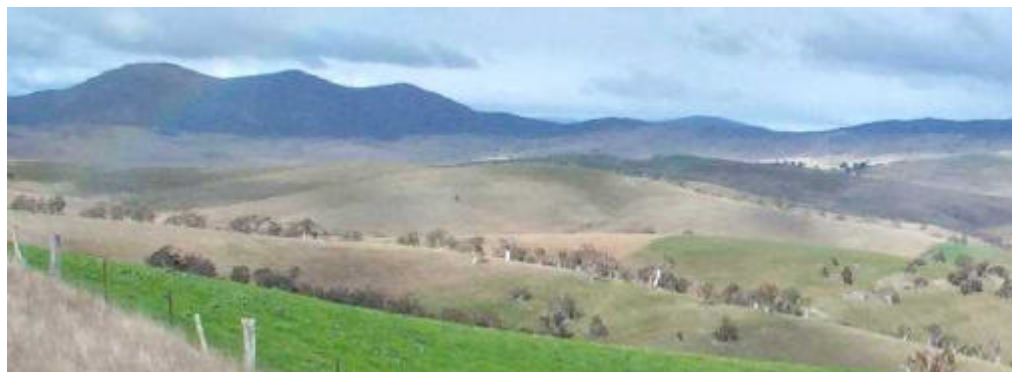
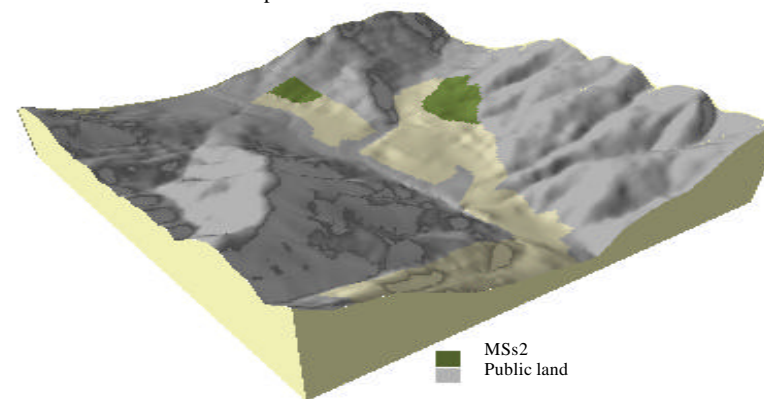
## Soil landform unit: MSs2; Mountains on schist, type 2, Feathertop

Landform pattern	Mountains
Elevation (m)	750-850
Annual rainfall (mm)	1000-1100
Geomorphic unit	1.1.1 Eastern Uplands; High Elevation Landscapes; Isolated Summits
Geology	Ordovician metasediments (slates and schists), gneiss, associated colluvium and alluvium and minor granitic rocks

Locality diagram



Position in landscape



Landform component	1	2	3
Landform element	Steep to very steep slopes, on ridges	Scarps	Steep to very steep slopes, on edge of plateau
Slope range (%)	0-80	20-150	0-80
Site drainage	Rapidly drained	Rapidly drained	Rapidly drained
Rock outcrop	Very slightly rocky (<2%)	Very rocky (20-50%)	Very slightly rocky (<2%)
Soil description	Deep and shallow organic loams and stony loams	Rock, shallow stony loams	Shallow stony & organic loams
Present land use	Water production, forestry, conservation	Water production, conservation	Grazing, conservation
Susceptibility to erosion	Sheet and rill: Moderate/High	Sheet and rill: Moderate/High/Very High	Sheet and rill: Moderate/High
	Gully; Moderate	Gully; Moderate	Gully; Moderate
	Landslip: Moderate	Landslip: Moderate	Landslip: Moderate
	Wind: Moderate	Wind: Moderate	Wind: Moderate
Native vegetation	Sub alpine woodland; <i>E. pauciflora</i> , to tall woodland; <i>E. dalrympleana</i> , alpine herbfield-shrubs	Alpine herbfield-shrubs	Sub alpine woodland to wet mallee; <i>E. pauciflora</i> , alpine herbfield-shrubs; <i>Poa australis</i> , <i>Celmisia longifolia</i>