

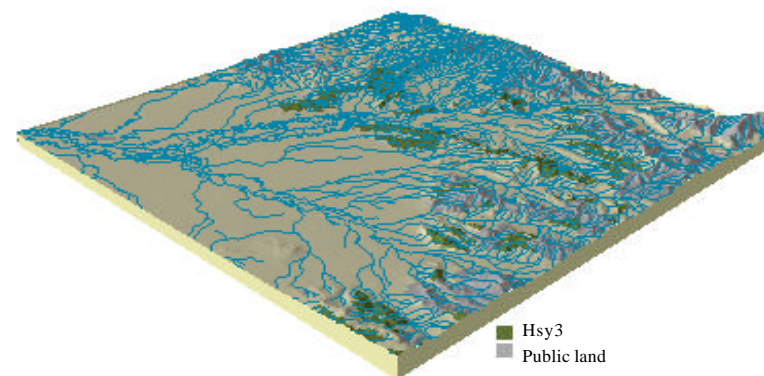
Soil landform unit: Hsy3; Hills on Ordovician sediments, type 3, Bowman / Carboor / Myrrhee / Dandongadale

Landform pattern Hills with narrow crests, steep to moderate hill slopes and gentle footslopes
 Elevation (m) 200-600
 Annual rainfall (mm) 700-1100
 Geomorphic unit 1.3.1 Eastern Uplands; Ridges, Valleys and Hills; High Dissected Ridges and Valleys
 Geology Ordovician greywacke, sandstone, siltstone, shale, mudstone

Locality diagram



Position in landscape



Landform component	1	2	3
Landform element	Hill crest	Moderate to steep hill slopes	Gentle footslopes
Slope range (%)	>5	10-32	1-10
Site drainage	Rapidly drained	Well drained	Poor to very poorly drained
Rock outcrop	Rocky	Rocky	Nil
Soil description	Shallow, stony brown loam soils and weakly bleached reddish brown gradational soils	Weakly bleached reddish brown gradational soils and red texture contrast soils	Red and yellowish brown texture contrast soils, yellowish brown gradational soils
Present land use	Conservation, forestry, grazing	Conservation, forestry, grazing	Conservation, forestry, grazing
Susceptibility to erosion	Sheet: Moderate	Sheet: Moderate	Sheet: Low
	Gully: Very low	Gully: Moderate	Gully: Moderate
	Landslip: Very low	Landslip: Moderate	Landslip: Low
	Wind: Very low	Wind: Low	Wind: Very low
Native vegetation	<i>Eucalyptus macrorhyncha</i> , <i>E. polyanthemos</i> , <i>E. dives</i> , <i>E. rubida</i>	<i>E. macrorhyncha</i> , <i>E. polyanthemos</i> , <i>E. dives</i> , <i>E. rubida</i>	<i>E. blakelyi</i> , <i>E. dives</i> , <i>E. macrorhyncha</i>