

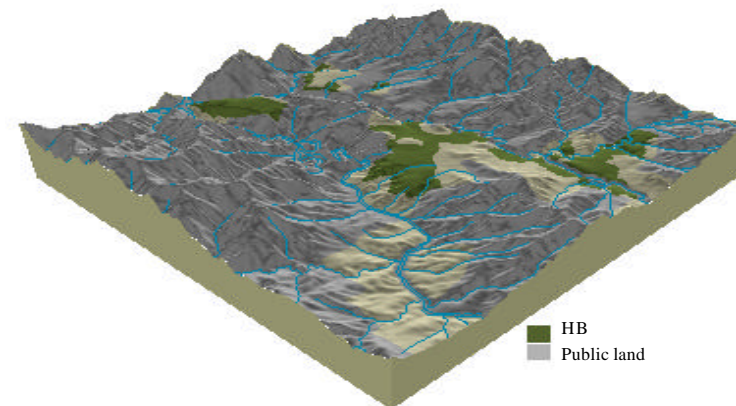
Soil landform unit: HB; Hills, basaltic

Landform pattern	Rises, hills
Elevation (m)	550-1550
Annual rainfall (mm)	950-1800
Geomorphic unit	1.3.4 Eastern Uplands; Ridges, Valleys and Hills; Enclosed Low Hills and Valleys
Geology	Tertiary basalt and associated colluvium

Locality diagram



Position in landscape



Landform component	1	2
Landform element	Steep and moderate hillslopes	Moderate to gentle hillslopes and footslopes
Slope range (%)	10-40	3-20
Site drainage	Well drained	Well drained
Rock outcrop	Nil	Nil
Soil description	Friable red texture contrast and red gradational soil	Friable red texture contrast and red gradational soil
Present land use	Grazing	Grazing
Susceptibility to erosion	Sheet and rill: High	Sheet and rill: Moderate
	Gully: Low	Gully: Low
	Landslip: Moderate	Landslip: Moderate
	Wind: High	Wind: Moderate
Native vegetation	<i>Eucalyptus rubida</i> , <i>E. radiata</i> , <i>E. stellata</i>	<i>E. radiata</i> , <i>E. rubida</i> , <i>E. stellata</i>